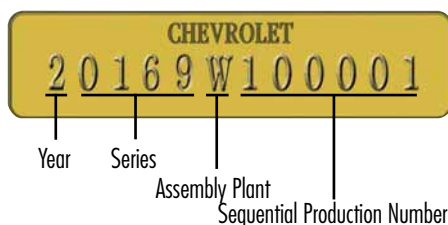


# Chevy II/ Nova V.I.N. Information

## V.I.N. Plate Location

**1962-67 Models** have the Vehicle Identification Number located on a steel plate riveted to the left door jamb on the hinge pillar.

### 1962-64 Models



1962-64 1st Digit: Model Year:

2 =	1962
3 =	1963
4 =	1964

1962-64 2nd through 5th Digits: Model Series:

Series	4 Cyl.	6 Cyl.	Model
1962			
100	01	02	11, 69, 35
300	03	04	11, 69, 45
Nova	---	04	41, 37, 67, 49, 35
1963			
100	01	02	11, 69, 35
300	03	04	11, 69, 45
Nova	---	04	37, 67, 49, 35

1964 - V8 engines were an option and are coded as a 6 Cylinder Series

Model	4 Cyl.	6 Cyl.	Model
Chevy II	01	02	11, 69, 35
Nova	---	04	11, 37, 47, 69, 35

Model	Body Style
11	2 Door Sedan
35	4 Door Station Wagon - 6 Passenger
37	2 Door Sport Coupe
41	2 Door Sedan (1962 Only)
45	4 Door Station Wagon - 9 Passenger (1963 Only)
47	2 Door Sport Coupe Super Sport (1964 Only)
49	4 Door Sedan
67	2 Door Convertible
69	4 Door Sedan

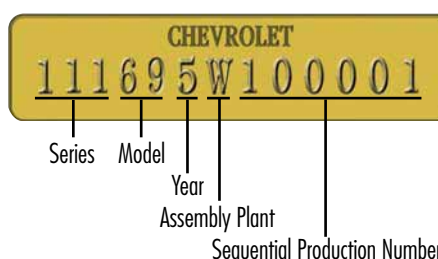
1962-64 6th Digit: Assembly Plant:

G =	Framingham, Massachusetts
K =	Kansas City, Missouri
N =	Norwood, Ohio
O =	Oakland, California
W =	Willow Run, Michigan

## V.I.N. Plate Location

**1968-1979 Models** have the Vehicle Identification Number located on a steel plate riveted to the upper dash panel, visible through the windshield.

### 1965-71 Models



1965-71 1st Through 5th Digits: Model Series:

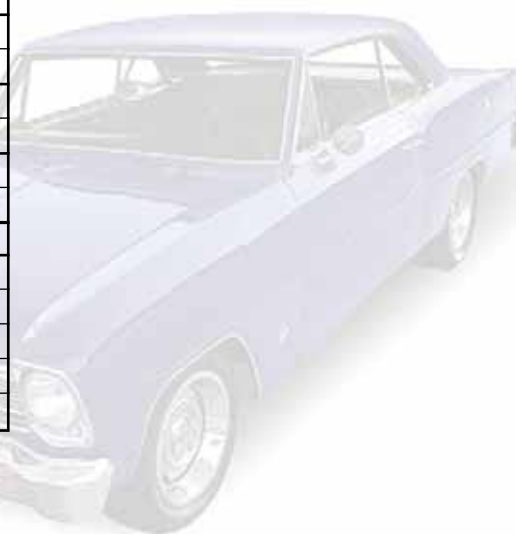
Series	4 Cyl.	6 Cyl.	8 Cyl.	Model
1965				
Chevy II	111	113	114	11, 69, 35
Nova	---	115	116	37, 69, 35
Super Sport	---	117	118	37
1966				
Chevy II	111	113	114	11, 69, 35
Nova	---	115	116	37, 69, 35
Super Sport	---	117	118	37
1967				
Chevy II	111	113	114	11, 69, 35
Nova	---	115	116	37, 69, 35
Super Sport	---	117	118	37
1968				
Chevy II	111	113	114	27, 69
1969				
Nova	111	113	114	27, 69
1970				
Nova	111	113	114	27, 69
1971				
Nova	---	113	114	27, 69
Model	Body Style			
11	2 Door Sedan			
27	2 Door Coupe			
35	4 Door Station Wagon - 6 Passenger			
37	2 Door Sport Coupe			
69	4 Door Sedan			

1965-71 6th Digit: Model Year:

5 =	1965
6 =	1966
7 =	1967
8 =	1968
9 =	1969
0 =	1970
1 =	1971

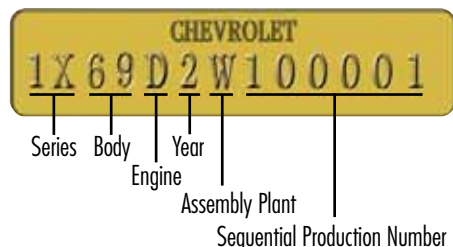
1965-71 7th Digit: Assembly Plant:

N =	Norwood, Ohio
O =	Oshawa, Ontario, Canada
W =	Willow Run, Michigan



# Chevy II/ Nova V.I.N. Information

## 1972-79 Models



1972-79 1st Through 4th Digits: Model Series:			
Model	Series	Body	Style
1972			
Nova	1X	27	2 Door Coupe
Nova	1X	69	4 Door Sedan
1973-74			
Nova	1X	27	2 Door Coupe
Nova	1X	17	2 Door Hatchback
Nova	1X	69	4 Door Sedan
Custom	1Y	27	2 Door Coupe
Custom	1Y	17	2 Door Hatchback
Custom	1Y	69	4 Door Sedan
1975			
Nova / S	1X	27	2 Door Coupe
Nova	1X	17	2 Door Hatchback
Nova	1X	69	4 Door Sedan
Custom / LN	1Y	27	2 Door Coupe
Custom	1Y	17	2 Door Hatchback
Custom / LN	1Y	69	4 Door Sedan
1976-77			
Nova	1X	27	2 Door Coupe
Nova	1X	17	2 Door Hatchback
Nova	1X	69	4 Door Sedan
Concours	1Y	27	2 Door Coupe
Concours	1Y	17	2 Door Hatchback
Concours	1Y	69	4 Door Sedan
1978-79			
Nova	1X	27	2 Door Coupe
Nova	1X	17	2 Door Hatchback
Nova	1X	69	4 Door Sedan
Custom	1Y	27	2 Door Coupe
Custom	1Y	69	4 Door Sedan

1972-79 5th Digit: Engine Code			
Year	Code	C.I. / Litre	Induction
1972-79	D	250	1 bbl.
1972-73	F	307	2 bbl.
1975-76	G	262	2 bbl.
1979	G	305	2 bbl.
1972-75	H	350	2 bbl.
1972	J	350	4 bbl.
1973-74	K	350	4 bbl.
1976-79	L	350	4 bbl.
1976	Q	305	2 bbl.
1977-78	U	305	2 bbl.

1972-79 6th Digit: Model Year:	
2	= 1972
3	= 1973
4	= 1974
5	= 1975
6	= 1976
7	= 1977
8	= 1978
9	= 1979

1972-79 7th Digit: Assembly Plant:	
K	= Kansas City, Missouri
L	= Van Nuys, California
N	= Norwood, Ohio
T	= Tarrytown, New York
W	= Willow Run, Michigan

## Model Year Production

**Note:** These numbers are not exact. They were compiled from reliable resources, but, even Chevrolet, or GM, does not know exactly how many Chevy II/Novas were delivered to the public.

1962	=	326,607
1963	=	372,626
1964	=	191,691
1965	=	118,000
1966	=	133,400
1967	=	106,500
1968	=	147,570
1969	=	251,903
1970	=	315,122
1971	=	194,878
1972	=	349,733
1973	=	369,511
1974	=	390,537
1975	=	273,014
1976	=	334,728
1977	=	365,264
1978	=	288,109
1979	=	94,721





# VISIT OUR NEW SHOWROOM!

**Conveniently Located in Huntington Beach, CA!**

- 10 minutes from the beach
- 20 minutes from Knott's Berry Farm
- 20 minutes from John Wayne Airport
- 30 minutes from World-Famous Disneyland



## **Bring the Family!**

Step past the featured display car and take a seat in front of our entertainment center, designed to create a comfortable atmosphere for enthusiasts, their children, and their significant others.



## **Discover Our Products**

Browse our unparalleled selection of restoration, performance parts and accessories at these convenient computer terminals. Discover the latest products from Classic Industries® for your project.

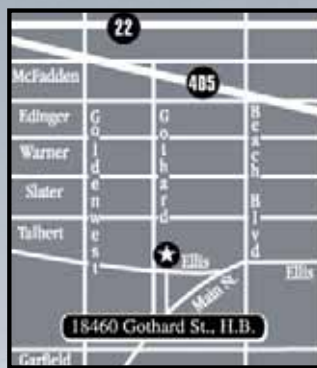


## **Save on Shipping with Will Call**

Want to pickup your order at the showroom and save the shipping costs? With our immense inventory of parts, we are SoCal's biggest parts store for classic GM and Mopar models.

Automotive enthusiasts seeking personal service have always been invited and encouraged to visit our location in Huntington Beach, California. We have recently expanded our showroom facility to make the experience worth the trip for our customers and their families.

More than mere parts counter, our new showroom has something for everyone. A rotation of show cars is on display, including award-winning Classic Industries restorations such as the "TWISTED" Duster, "CAMOTION" Camaro, and "INNOVATION" Nova. Information kiosks let you browse electronically while our entertainment center keeps spouses and younger enthusiasts occupied. Naturally, the latest gift and apparel items are presented along with the newest reproduction parts. Our friendly, knowledgeable staff is ready and able to help with questions and ideas to make your restoration project smooth and easy.



**18460 Gothard Street  
Huntington Beach, CA 92648**

## **Showroom Hours**

**Monday thru Friday  
8:00 a.m. - 5:00 p.m.**

**Saturday  
10:00 a.m. - 3:00 p.m.**

**Sundays and Holidays  
Closed**



# THE ALL NEW www.classicindustries.com



## Improved Account Management!

Managing your account couldn't be simpler! Update your information, track your orders, buildup and modify your wish list, and more, all at your convenience.



## All New Shopping Experience!

Our redesigned website is much more than just a sleek new look. Improved usability and a streamlined checkout process eliminate the hassle of ordering parts for your project!



## More Product Detail!

Multiple product views give you the full picture of what you're ordering. "Also Fits" information and the "Ask a Tech" feature ensure that you get the right part for your project!



## Improved Product Search!

New search capabilities make it easier than ever to browse our product line! "Shop by Brand" lets you check out the latest from the names you know and the brands you trust!



## Social Media Integration!

Social media updates, news, videos and articles are easily accessible right from the main page! See posts from our upcoming Classic Industries® blog site [blog.classicindustries.com/](http://blog.classicindustries.com/)



## At A Glance!

Scroll through the most popular items Classic Industries® has to offer using our new *Most Popular*, *Top Sellers* and *Most Viewed* tabs!



SOCIAL  
MEDIA



## Your All-Access Pass to Classic Industries®

Receive special sales codes, promotions and product updates on our Facebook, Google + and Twitter pages!



Follow us on Facebook, Google + and Twitter! Receive special sales codes, promotions and product updates. Stay informed on special events and interact with other automotive enthusiasts, staff and fans of Classic Industries®!

[www.facebook.com/classicind](http://www.facebook.com/classicind)

Cruise on over to Classic Industries' new video media website where you can access a library of *Overhaulin'*, *Chop Cut Rebuild*, and *My Classic Car* episodes, Classic Industries® television commercials and how-to videos to guide you through installation processes.

[www.classicindustries.tv](http://www.classicindustries.tv)

Watch up-to-date instructional videos, television commercials and interact with our community of automotive enthusiasts!



# Four Ways to Order!



## ORDERING BY PHONE TOLL FREE 800-854-1280

In the continental United States, Hawaii and Alaska.  
Outside the U.S. call 714.847.6887.

**Mon-Fri 8:00-5:00**      **Sat 10:00-3:00, P.S.T.**  
(Closed Sundays and holidays)

### *Information you'll need when ordering by Phone:*

#### **Customer Number**

Found on back cover of your catalog above your name, this number allows Classic Industries® to quickly access your information. If you do not have a customer number, a new one will be given to you when placing your order.

#### **Billing and Shipping Address**

Please have the billing and shipping address available. Credit card orders are verified by name and address before shipping. Your order can be shipped to a different address, provided the cardholder's name and address match the credit card used. You may be asked to contact your credit card company to have the shipping address added to your account.

#### **Year and Model of Vehicle**

To provide the best possible service, we may require the year and model of your vehicle. This helps verify that the parts you order are correct for your car.

#### **Part Numbers**

All Classic Industries® products are listed with a part number. If possible, please have the part numbers of the products you're ordering available before calling to make the ordering process faster and more convenient.



## ON-LINE ORDERING

**[www.classicindustries.com](http://www.classicindustries.com)**

Classic Industries® offers on-line ordering directly through our website. Log on to [classicindustries.com](http://classicindustries.com) and order on-line. On-line ordering is available 24 hours a day 7 days a week for your convenience.



## ORDERING BY MAIL

**Mail Your Completed Order Form to:**

Classic Industries®  
18460 Gothard St.  
Huntington Beach, CA 92648  
Attention: Order Dept.



## ORDERING BY FAX

**TOLL FREE 800-300-3081**

In the continental United States, Hawaii and Alaska.  
Outside the U.S. call 714.847.6887.

**Important: For assistance with your order form, see page entitled "How To Fill Out Your Order Form".**

## Service Excellence from the Restoration Leaders!



## You No Longer Have To:

- ✗ Pay excessive fees to protect your merchandise
- ✗ Contact the carrier yourself
- ✗ File a damage claim yourself to have the carrier inspect the damaged items
- ✗ Send the damaged items back at your expense

**With Classic Industries® the worry is eliminated!**

## PROCEDURE FOR RETURNING SHIPPING DAMAGES

We handle the claim so you don't have to! If any part you receive is damaged during shipping and handling, simply contact our customer service department toll-free at 800.854.1280 within two business days.

After verifying the damage, Classic Industries® will issue a pickup call tag through the carrier that shipped the products. The carrier will pickup the damaged goods from your address and return them to us at no expense to you. After the product has been inspected, our customer service department will send a replacement part.

In order to ensure replacement of damaged products, please return items in their original box and packaging. Failure to do so may result in the claim being denied. Someone must be available at the pickup address to supply the damaged products when the carrier arrives. If the carrier is unable to pickup the products for any reason, the customer may be required to return the products at their expense.

*Note: Some products are excluded from damage call tag pickup. Call a customer service representative for information about products that are not eligible.*



## Money Back Guarantee



*At Classic Industries®, we take pride in the quality of the products we offer and back it up with a 100% Money Back Guarantee. If for any reason you are not satisfied with a product or purchase, you can return the product within 30 days of receipt for a full refund, credit or exchange.*

Not all restoration parts are created equal. But at Classic Industries®, we research each and every product we sell to make sure our customers are getting the highest quality products in the market. We have decades of experience in product selection and we painstakingly scrutinize every product we offer for quality manufacturing, materials, and craftsmanship before we will offer it in any of our catalogs. Many of our employees are automotive enthusiasts themselves. In fact, many were customers prior to becoming employees, so we understand the needs of the modern classic car enthusiast. Our product procurement specialists have made it their goal to select restoration products that have been manufactured using modern technology and materials with an emphasis on originality, longevity, and attention to detail. What else would you expect from the company that started it all? Classic Industries® is the name you can trust, and we'd like for you to consider us as your partner in restoration. When a company

continually offers a quality product for a reasonable price and backs up every sale with the best customer service in the industry, people come back! That's why Classic Industries® has been the leader in restoration for almost four decades. So, if you haven't already decided for yourself that Classic Industries® is the most logical choice as your restoration parts supplier, then check out our Money Back Guarantee. If for any reason you are not 100% satisfied with a product or purchase, you can return the product within 30 days of receipt for a full refund, credit, or exchange.

- ✓ **Lowest Prices Guaranteed!**
- ✓ **The Finest Quality Reproductions!**
- ✓ **No Fault Product Protection Offer!**
- ✓ **100% Satisfaction or Your Money Back!**



## Price Match Guarantee



### If you find it for less we'll match the price!

Classic Industries® will match any competitors current advertised price for an identical product. Simply send us a copy of the competitor's current advertised price from a catalog, advertisement or website (with URL) and we'll match the price. The price match guarantee is available at the time the order is placed and for in-stock merchandise only. Price matching will be determined by a competitor's most current retail published price and is limited to competitors within the Restoration Industry.

**Important:** In an effort to provide our retail customers with the most competitive pricing available, we will match our current competitor's pricing. Price matching will be determined by a competitor's most current retail published price and is limited to competitors within the "Restoration Industry". Performance parts and special orders are exempt from price matching policy. Classic Industries® reserves the right to decline price matching if

pricing is deemed to be a special offer, a sale or closeout price, or a non-current price. Competitors sale pricing, inventory reductions, close outs, special promotional offers, etc. may be exempt from the "price match" guarantee. The guarantee is subject to the terms and conditions of Classic Industries® current policies.

Classic Industries® will generally contact competitors to confirm that the published price is current due to market changes, demand or availability. Price matching supersedes all other promotional offers and on sale pricing. If Classic Industries® matches a price from a competitor, additional discounts on that product or products may not apply. If the standard retail price of a product is higher than the competitor's price and an applied discount reduces the price below the competitor's pricing, the now discounted or sale pricing will prevail. We reserve the right to change or revoke this offer at any time without notice. Classic Industries® reserves the right to decline price matching.

## Think Of Us As Your Partner In Restoration!

A restoration can take years! We understand the complications and problems that can occur when ordering precious parts for your project car. If you are like most people, you want perfection. The many different elements that make up a restoration isn't just limited to the parts you install. You sometimes need to rely on other outside elements such as body shops, painters, upholstery specialists and parts suppliers. That's where we come in. We offer the quality parts you want without all the guesswork. We carry one of the largest inventories of restoration products and accessories the market has to offer. What's more, you can rely on our nearly

40 years of experience to help you through the rough spots when you need it. Our tech advisors are always ready and willing to discuss any problem you may have concerning the parts for your vehicle and your restoration. Unlike other companies, we give you knowledgeable sales representatives, one of the largest inventories in the business, quick and efficient delivery, Toll Free ordering, and the experience to back it up. If you're not absolutely 100% satisfied with the products you receive. We'll refund 100% of your money! Classic Industries® – your partner in restoration!

# Form of Payment

# How to Order



## CREDIT CARDS

Classic Industries® accepts Visa, Mastercard, American Express, Optima, and Discover for your convenience. When placing your order, be sure to indicate the card holders name, address, home phone, business phone, credit card number and expiration date and billing address (if different from person placing order). A security code is required for credit card purchases. Please have your credit card readily available when placing your order. Minimum order is \$20.00. New or 1st time customers who are paying by credit card must have the order shipped to the cardholders billing address for the first order. Invalid or non-matching billing addresses could delay your shipment.

## CERTIFIED CHECKS

Classic Industries® will accept certified checks for your mail order. Be sure to include customer number and/or reference invoice number. Contact your bank to issue a certified check in the amount due for your order. All orders paid by certified check are held up to 15 days pending clearance.

## PERSONAL CHECKS

To use personal checks or business checks on prepaid orders, the name, address, and check number must be preprinted on the check. Be sure to include customer number and/or reference invoice number. Only first party checks will be accepted. All orders paid by personal check are held up to 15 days pending clearance.

## MONEY ORDERS/CASHIERS CHECKS

To use money orders or cashiers checks on prepaid orders be sure to include customer number and/or reference invoice number. All orders paid by money order are held up to 15 days pending clearance. Once released the order will leave within 24 hours of clearance.

Make Personal Checks or Money Orders payable to:  
**Classic Industries®**

## PAYPAL

Classic Industries® now accepts payments via PayPal! Simply complete your order over the phone with a customer service representative, get your invoice number and then send your payment to [paypal@classicindustries.com](mailto:paypal@classicindustries.com) through PayPal's "Send Money" feature and select "Goods and Services" for payment reason. Be sure to include your invoice number in the "Special Instructions" tab at checkout for fastest service. Orders are generally shipped within 72 hours or less of payment receipt. Contact our customer service department for additional details.



# General Information

## Sales Tax Information

Classic Industries® collects and remits sales tax based on state and local requirements. The sales tax laws have changed due to a Supreme Court ruling in 2018. The appropriate sales tax will be applied to your order and remitted based on your state's requirements. If your order is shipped, or picked up in a specific state that requires sales tax, the appropriate amount will be added to your order.

## Accuracy Of Descriptions

Classic Industries® makes every effort to verify the accuracy of all information published in this catalog. Each item is represented with information that is accurate to the best of our knowledge at the time the catalog is printed. Classic Industries® is not responsible or liable for mistakes, print errors or inaccurate information that may lead to, or result in labor costs or damages to any vehicle under any circumstances.

## Kit Products

All Classic Industries® Parts and Accessories catalogs include kits which contain a variety of products. On occasion we may run out of an item supplied with a kit. If this happens we will generally ship what is in stock and back order the item(s) which are not in stock. You may contact our sales department by phone to verify which items are not in stock at the time the order is placed. The customer may decide whether to accept the partial kit or have the entire kit back ordered until the kit is completed and all the items can be shipped at the same time. If the customer decides to accept partial delivery of the kit, then the full price of the kit will be charged to the customer and the back ordered items will be shipped no charge when they arrive at our warehouse. Customers will be charged the appropriate freight fees when applicable. Cancellation of products from a kit will be accepted at 25% below the actual current retail price of the item. On COD orders the price of the kit is charged in full and the back ordered items are shipped on a COD freight only basis.

## Rights and Lefts

Some items in this catalog are presented as left or right hand products (left side - driver) (right side - passenger). LH or RH sides are determined by sitting in the vehicle, not standing in front of the vehicle.

## MAIL ORDERS

Fill out the order form located in the back section of this catalog. For quick service use your credit card, money order, or cashiers check. Personal checks are held for 15 days from date of receipt pending clearance. All mail orders must be prepaid including freight (when applicable). COD orders through the mail will not be accepted. If you have any questions regarding product information or availability, contact our sales representatives during regular business hours at 800.854.1280.



## ORDER BY PHONE

Classic Industries® employs knowledgeable sales representatives to assist you when placing your order. Our sales representatives are trained to answer your questions regarding restoration and the parts listed in this catalog. Call during regular business hours Mon-Fri 8:00-5:00, Sat 10:00-3:00, P.S.T. Closed Sundays and holidays. Our convenient Toll Free number allows you to place your order with confidence to assure you get exactly what you want when you want it! Inter-continental U.S. 800.854.1280. Outside U.S. country code + 1.714.847.6887



**TOLL FREE 800-854-1280**

## FAX YOUR ORDER

Classic Industries® offers a convenient FAX line for customers who have access to a Fax machine. Our FAX is available 24 hours a day 7 days a week for your convenience. Fill out the order form completely and FAX your order. Within U.S. 800.300.3081. Outside U.S. country code + 1.714.848.9501



**TOLL FREE 800-300-3081**

## ON-LINE ORDERING

Classic Industries® offers online ordering directly through our website. Log on to [classicindustries.com](http://classicindustries.com) and order online. Online ordering is available 24 hours a day 7 days a week for your convenience.



**WWW.CLASSICINDUSTRIES.COM**

## FOREIGN ORDERS

All foreign orders must be prepaid before the products can be shipped. The Classic Industries® staff will check with the various freight companies that deliver to your country and area to determine the best possible rates available for your order. Once your order is rated, you'll be contacted by e-mail or phone to approve the rate. After approval and payment is received, the order will be shipped. The Shipping & Handling field for foreign orders will state "TBD" (To Be Determined). Rates are subject to change once the order has been packed and is ready to ship. Rates are calculated based on estimations of weight, dimensions and other factors. Should changes in freight costs occur once the order is packed and ready to ship, Classic Industries® will notify the customer immediately before the shipment is sent. If you have any questions or concerns, please direct your inquiries to [info-desk@classicindustries.com](mailto:info-desk@classicindustries.com).

## Color Matches

Due to multiple manufacturers of products Classic Industries® provides, color variations may occur. Slight color variations are common especially amongst interior products and does not constitute a defect. These products are not eligible for return for this reason.

## Pricing

Current product pricing and our pricing policy can be found by visiting our website. Prices in this catalog were in effect at the time of printing and supersede all prices in any previous publication. Classic Industries® makes every effort to honor the prices contained herein. Due to constantly changing costs in raw materials, supply chain issues, and other unforeseen circumstances, pricing on products are subject to change. We reserve the right to change prices without notice. For current pricing, please go to [Classicindustries.com](http://Classicindustries.com), or contact a Classic Industries® sales representative during normal business hours. Eligibility of products for discounts are subject to change without notice.

## Trademark and Copyright

Classic Industries® Parts and Accessories catalog is copyrighted. No part of this publication including text, photos or illustrations may be reproduced without the prior written permission of Classic Industries®. The following names and/or symbols: Mopar, Dodge, Plymouth, Barracuda, Belvedere, Coronet, Challenger, Charger, Cuda, Dart, Duster, Fury, GTX, Hemi, Polara, Road Runner, Six Pack, Super Bee, Scamp, Valiant are registered trademarks of Chrysler Group, LLC and are used for reference purposes only unless specified otherwise.

## Product Availability

Availability of all items in this catalog are subject to change without notice. We reserve the right to discontinue products, services or accessories without notice.

## Shortages

Always check the contents of your delivery to assure all the parts ordered were received. If you are missing any item(s) be sure to check for back orders notated on your invoice before calling our customer service department (see back orders). If a shortage has occurred, contact our customer service department within 2 working days of delivery to assure a prompt replacement. Classic Industries® assumes no liability after this period.



## ALASKA, HAWAII, GUAM & PUERTO RICO

Orders being shipped to Alaska, Hawaii, Guam or Puerto Rico, are shipped via Ground, Overnight or 2-Day delivery whenever possible. All orders must be prepaid with credit card, money order, or check. No COD orders are accepted. Rates depend on the items being shipped. Contact our sales department for exact rates.

**Important:** Promotional shipping offers do not apply to Alaska, Hawaii, Guam, Puerto Rico, Canada or any foreign destination.



## APO/FPO

Parcel post is the only means of shipping to an APO or FPO address. Due to size restrictions the maximum shipping box can be no larger than 72" width and girth combined. All military personnel must write or call to determine what size box will be used for the shipment. Once this is determined, Classic Industries' will call or write to let you know if the order can be shipped by Parcel Post, and the correct amount required. All orders that exceed these limitations will be shipped in accordance with customer approval.

## INSURANCE

Each order is charged an insurance fee of \$3.50. This fee will insure the entire order and protect you completely from damages or loss. The order forms located in the rear of this catalog include this fee in the indicated column when your order is being totaled.

## COD ORDERS

COD orders are gladly accepted on all normal ground shipments, excluding truck freight orders. COD orders will require cash only upon delivery of your order. All COD orders are shipped by FedEx. Personal checks, business checks, money orders and certified checks are not accepted. COD orders are not accepted through the mail. COD orders must be placed by phone during regular business hours. The appropriate shipping fees will be added. COD orders are exempt from discounts and free shipping promotion. The customer will pay all appropriate fees in accordance with current policies and freight rates. A fee of \$11.95 per box will be added to all COD orders. Oversize and/or overweight boxes will be charged in accordance with the rate chart located on the order blank. Classic Industries' reserves the right to change shipping rates in accordance with rate increases by freight companies. COD orders are limited to \$999.00. If the COD order should be returned to Classic Industries' for non-acceptance/non payment, the customer will be responsible to reimburse Classic Industries' for any and all freight charges related to the order. In addition, a 25% restocking fee will be applied to the returned products. All outstanding charges must be paid before any additional orders will be accepted.

## SPECIAL RATE SHIPPING FEES/DROP SHIP FEES

Some items we offer may require a mandatory shipping or drop ship fee. This fee may also apply to products sold over the counter at Classic Industries' Showroom location. Contact our sales department for actual additional shipping fees.

**Important:** Products with special rate shipping fees or drop ship fees are excluded from promotional shipping offers.



## EXPRESS SHIPPING

Classic Industries' offers Overnight and 2-Day air delivery service in the Continental U.S., Alaska, Hawaii, Guam and Puerto Rico. Pre-payment with a credit card is required before shipments can be sent. Simply call in your order before 2:00 p.m. Pacific Time, Monday-Friday during regular business hours and your Overnight order will arrive the following business day (pending availability). Saturday delivery is available only on Overnight service. A \$16.95 fee will be added to Overnight fees for Saturday delivery. 2-Day orders will arrive within 2 business days (pending availability). 3-Day service is available within the contiguous 48 states. Your order will usually leave within 24 hours and will arrive within 3 business days of ship date (pending availability). A \$9.95 service fee for any of these options will be added in addition to shipping fees. Contact our sales department for rates regarding air service delivery. Rates depend on the items being shipped. Some products are charged at dimensional weight as opposed to actual weight.

**Important:** Air service does not guarantee your order will arrive on the expected date of delivery. Under normal circumstances, air service is guaranteed. However, due to adverse weather conditions, natural disasters or unforeseen circumstances, there may be delays. Classic Industries' is not responsible for deliveries that are delayed. Air service orders are excluded from promotional shipping offers.

## TRUCK FREIGHT

Products in this catalog that require truck freight are typically indicated with a "Truck Freight" icon. This indicates that the product is too large for ground delivery and must be shipped by motor freight. There may be items listed herein that are not indicated as truck freight. These items must be prepaid, including freight charges, before the shipment can be sent. Truck freight rates may vary depending on products being ordered, fuel surcharges, and the shipping destination. Residential deliveries require an additional fee assessed by the carrier due to the additional coordination and transit outside of normal routes. Some Truck Freight shipments may require special handling (e.g., lift gate service, re-routing, additional freight charges, etc.). Acceptance of truck freight shipment, rate and applicable fees is acknowledged at time of order. For additional information visit us online at [help.classicindustries.com](http://help.classicindustries.com) or contact our customer service department during regular business hours.



## OVERSIZE-OVERWEIGHT

These are the designations for Ground or Standard packages that meet one of the following specifications for billing purposes: Oversize 1 (OS1) designates a combined length and girth exceeding 84", but less than 108". Actual weight is less than 30 lbs. and is billed at 30 lbs. Oversize 2 (OS2) designates a combined length and girth exceeding 108" but less than 130". Actual weight is less than 70 lbs. and is billed at 70 lbs. Oversize 3 (OS3) designates a combined length and girth exceeding 130" but less than 165". A handling fee will be added to all (OS3) orders. Overweight 1, 2, and 3 designates actual weight is less than 90 lbs. and is billed at >90 lbs. as appropriate. We reserve the right to charge Oversize and Overweight fees on any order containing oversize and overweight products, even if it is not indicated in the catalog. For additional information visit us online at [help.classicindustries.com](http://help.classicindustries.com) or contact our customer service department during regular business hours.



## FOB WAREHOUSE - "FREE ON-BOARD"

All Classic Industries' orders are shipped based on FOB Warehouse. Unless otherwise specified, Classic Industries' is not responsible for freight charges, shipping charges, or damages once the shipment leaves our warehouse.

# General Information

## Back Orders

The invoice located in the packing slip of your order will notate any items that were out of stock at the time of shipping. The unavailable items will be back ordered unless otherwise specified on your order form or verbally to a sales representative when placing your order by phone. Back orders are usually shipped when the products arrive at our warehouse without prior notification. Classic Industries' will make an effort to contact the customer if the backorder is more than 90 days old. If you wish to cancel a back order, please notify our customer service department immediately. The customer will be responsible for a 25% restocking fee and freight charges if the back order is cancelled or returned after the items are shipped.

## Damage Claims

Always check the contents of your shipment in the presence of the person delivering the merchandise. Should any damage occur, immediately notify Classic Industries' customer service dept. so that all steps necessary will be taken to ensure a prompt replacement of any damaged goods. Accurate instructions will be given on damaged goods replacement. Classic Industries' is not responsible if no notification is given within 2 working days of receipt of goods (excluding Sundays and Holidays). Classic Industries' will file a claim with the carrier in most cases. If the customer files a claim with the carrier, Classic Industries' will not be responsible for replacing damaged products and the customer will be responsible to pay for any replacements until the carrier pays the claim. Any replacement parts due to sales errors or customer errors in ordering will be sent using the same shipping method as the original order when possible. Please follow these instructions to avoid any problems or misunderstandings associated with damaged products and freight claims.

## Refusals

All refused COD orders will be subject to a 25% restocking fee. Classic Industries' will consider the entire order cancelled and void with no notification to the customer. The customer will be billed 25% plus all freight charges to and from the destination. Contact our customer service department for more information.

## Policies

All policies in Classic Industries' current catalog supersede any and all policies in any previous catalog or publication.

## Sales Errors/Ordering Errors

Classic Industries' is not responsible for customer errors or employee sales errors. Every effort is made to insure that the products you are ordering are accurate. Should an error occur, we will make every effort to resolve the issue. Replacement products will be shipped the same method as the original order whenever possible. Classic Industries' assumes no responsibility or liability for damages, fees, storage charges, or any other inconvenience that may be associated with sales errors or customer ordering errors.

## Returns

Products may be returned for a full refund on the product, credit or exchange within 30 days of receipt. All returns are subject to a 25% restocking fee after 30 days. Should you need to return a part for refund, exchange or credit, please contact our customer service department for a return authorization number and instructions. Classic Industries' will not accept returned goods without prior authorization. Customer will pay freight on all return orders. Allow up to 3 weeks to process refund or credit.

**Important:** Gift certificates have no cash value and must be redeemed for merchandise only. Literature, CDs, videos, printed materials, stencil kits, stripes, electrical parts, gauges, wiring harnesses, switches, etc. are non-returnable. All special order products must be prepaid in full and are non-returnable. No returns on partial kits or sets. There is no guarantee on moving parts such as engines, transmissions, rear ends, steering gears, water pumps, distributors, wiper motors, etc. If any product is modified, altered, painted, installed or disassembled in any way without Classic Industries' expressed written permission, the item is non-returnable. Classic Industries' always recommends professional installation on all products. Any item which has been altered, painted, installed or deemed non-resalable by Classic Industries' will be returned to the customer at the customer's expense. Classic Industries' is not responsible or liable for labor fees associated with the installation, removal, modification, painting or repair of any product purchased regardless of the circumstances. Classic Industries' is not responsible for any damage or discoloration incurred in relation to chemical products being used including cleaners, waxes, polishes, paints, etc.



<b>A</b>	
A-Arm.....	277, 280
A-Arm Bushing.....	277, 282
A-Arm Bushing Hardware.....	282
A-Arm Mounting Hardware.....	281
A-Arm Shaft Bolt.....	281
AC Air Distributor Duct Vent.....	376
AC Belt.....	363
AC Box Cover Hardware.....	382
AC Center Outlet.....	376
AC Clutch Switch.....	378
AC Compressor.....	379
AC Compressor Belt.....	380
AC Compressor Discharge Adapter.....	380
AC Compressor Manifold.....	380
AC Compressor Mounting Bracket.....	380-381
AC Compressor Mounting Stud.....	381
AC Compressor O-Ring Seal.....	380
AC Compressor Seal Washers.....	380
AC Compressor Spacer.....	380
AC Condenser.....	381
AC Condenser Check Valve Clip.....	381
AC Decal.....	166, 169-170
AC Delete Cover.....	378
AC Evaporator Case Drain Hose.....	382
AC Evaporator Core.....	382
AC Evaporator Core Orifice Tube.....	382
AC Evaporator Core Outlet Case.....	382
AC Evaporator Set.....	377
AC Evaporator Thermostatic Switch.....	382
AC Evaporator Tube Clamp.....	382
AC Expansion Valve.....	383
AC Flange Pad Seal Washer.....	380
AC Ground Wire.....	378
AC Hose Clamp.....	378
AC Hose Grommet.....	378
AC Hose Kit with Dryer.....	383
AC Liquid Bleed Valve Core.....	383
AC Manifold Assembly.....	383
AC Mounting Bolts.....	347
AC Mounting Nut.....	347
AC Muffler Assembly.....	383
AC POA Valve Fitting.....	383
AC POA Valve Retrofit Set.....	383
AC Receiver Bracket.....	383
AC Receiver/Dryer.....	382
AC Relocation Bracket.....	381
AC Retro-Fit Set.....	383
AC Service Cap.....	378
AC System.....	377
AC Tinary Switch.....	355
AC Tube Foam Seal.....	372
AC Wire Harness.....	538
Accelerator Cable Retainer.....	127
Accelerator Lever Cable.....	470
Accelerator Pedal.....	126, 130-131
Accelerator Pedal Ball Stud.....	126
Accelerator Pedal Mounting Pin.....	126
Accelerator Pedal Pad.....	126
Accelerator Pedal Rod.....	126-127
Accelerator Pedal Rod Support.....	127
Accelerator Pedal Spring.....	126
Accelerator Pedal to Firewall Mounting Screws.....	127
Accelerator Pump Squirters.....	467
Accelerator Return Spring.....	470
Accelerator Rod Grommet and Sleeve.....	127
Accelerator Spring Bracket.....	470
Accelerator Throttle Arm.....	127
Accelerator Throttle Lever.....	127
Access Plug, Wheelhouse.....	261
Accessories Parts Price List.....	142
Accessories, Automotive.....	137
Accessory Connector Pack.....	149
Accessory Installation Manual.....	142
Actuator Flexi-Rod, Shift.....	512
Actuator, Ignition Switch.....	98
Actuator, Neutral Safety Switch.....	96
Actuator, Vacuum.....	373
Adapter, Air Cleaner.....	441
Adapter, Alternator Conversion.....	449
Adapter, Battery Post.....	531
Adapter, Bluetooth Receiver.....	88
Adapter, Bucket Seat Mounting.....	33-34
Adapter, Carburetor.....	468
Adapter, Compressor Discharge.....	380
Adapter, Drag Link.....	278
Adapter, Filter AT (Deep Pan).....	502
Adapter, Key Column Wiring.....	104
Adapter, LS Motor Mount.....	387
Adapter, Rear Seal.....	393

Adapter, Shift Handle.....	524
Adapter, Shift Knob.....	526
Adapter, Steering Column.....	293
Adapter, Steering Wheel.....	102, 115, 118-119
Adapter, Tachometer.....	81, 425
Adapter, Thermostatic Oil Cooler Line.....	398
Adapter, Tilt Column Wiring Harness.....	104
Adapter, Turn Signal Harness.....	106
Adhesive, Emblem.....	161
Adhesive, Emblem/Trim.....	192
Adhesive, Rear View Mirror.....	63
Adhesive, Spray.....	59
Adhesive, Vinyl.....	59
Adhesive, Weatherstrip.....	181
Adjustable Electric Fan Thermostat.....	362
Adjustable Footrest.....	131
Adjuster Knob, Seat.....	31
Adjuster, Drum Brake.....	326
Adjuster, Headlamp.....	201
Adjusting Sleeve, Tie Rod.....	277
Advance Tube, Vacuum.....	426
Aerosol Coating.....	152-154
Air Cleaner.....	438, 440, 442-444
Air Cleaner Adapter.....	441-442
Air Cleaner Base.....	438
Air Cleaner Base Gasket.....	466
Air Cleaner Crankcase Vent Filter.....	439
Air Cleaner Decals.....	162
Air Cleaner Element.....	441
Air Cleaner Emblem.....	162, 438
Air Cleaner Filter.....	441
Air Cleaner Filter Oil.....	441
Air Cleaner Flame Arrestor.....	438
Air Cleaner Heat Diaphragm.....	439
Air Cleaner Lid.....	438
Air Cleaner Lid Seal.....	439
Air Cleaner Oil and Clean/Degreaser Kit.....	441
Air Cleaner Rubber Seal.....	443
Air Cleaner Spacer.....	441
Air Cleaner Wing Nut.....	439
Air Conditioning Hose Crimper Tool.....	378
Air Deflector Duct.....	373
Air Filter.....	440
Air Filter Oil & Clean/Degreaser Kit.....	440
Air Filter Service Instructions Decal.....	165
Air Flow Control Cable.....	375
AIR Injection Diverter Valve Tee.....	482
AIR Injection/Smog Extension Tube.....	482
AIR Injection/Smog Hose.....	482
Air Intake Heat Shield.....	441
Air Outlet Deflector.....	376
Air Shock Decal.....	172
AIR Tube Eliminator Plug.....	482
Alarm, False.....	146
Alignment Lockout Set.....	281
Alternator.....	447-449
Alternator Belt.....	363, 449
Alternator Bracket.....	451
Alternator Bracket for Headers.....	451
Alternator Bracket Heater Hose Clamp.....	449
Alternator Case Bolt.....	450
Alternator Charge Wire.....	546
Alternator Conversion Adapter.....	449
Alternator Fan Blade.....	449
Alternator Generator Light Plug.....	450
Alternator High Output Wire.....	546
Alternator Mounting Hardware.....	450
Alternator Pigtail.....	450
Alternator Pulley Nut.....	449
Alternator Rear Boot.....	449
Alternator Shutdown Relay Set.....	546
Alternator Spacer.....	451
Alternator Terminal Cap and Retainer.....	449
AM/FM Stereo Instructions.....	174
Amplifier, Radio.....	89
Amplifier, Transistor Ignition.....	433
Anchor Bolt, Seat Belt.....	37
Anchor Plate, Leaf Spring.....	300
Anchor Plate, Seat Belt.....	37
Anchor Plate, Spare Tire.....	260
Antenna.....	93
Antenna Base.....	94
Antenna Bezel Nut.....	94
Antenna Body, Radio.....	94
Antenna Cable.....	94
Antenna Gasket.....	94
Antenna Grommet, Car Cover.....	5
Antenna Ground Plate.....	94
Antenna Ground Strap.....	94
Antenna Lead Cable.....	94
Antenna Location Template.....	94

Antenna Mast.....	93
Antenna Nut Tool.....	94
Antenna Wrench Tool.....	94
Antenna, Power.....	93
Anti-Rattle Insulation.....	548
Anti-Seize Lubricant.....	219
Anti-Squeak Insert, Fuel Tank.....	453
Anti-Theft Device.....	146
Antifreeze Tag.....	166
Apparel.....	132-135
Applicator Pads.....	150
Applicator, Decal.....	175
Apron, Fender.....	229
Arm, Control.....	280-281
Arm, Door Hinge.....	245
Arm, Steering.....	327
Armrest Base.....	48-49
Armrest Base Molding.....	49
Armrest Base Screw.....	49
Armrest Pad.....	48-49
Armrest/Piston Covers.....	47
Ashtray.....	101
Ashtray Socket, Fiber Optic.....	101
Ashtray, Dash.....	101
Assembly, Horn.....	111
Assembly, Parking Brake.....	131
Astro Ventilation Window Decal.....	169
Audio.....	84-85
Auto Dollies.....	147
Auto Shift Lens Backing Plate.....	124
Auto Transmission Shift Linkage.....	512
Automatic Shifter.....	509-511
Automatic Transmission Filter.....	502
Automatic Transmission Fluid.....	502
Automatic Transmission Pan Bolt.....	503
Automotive Literature.....	142-145
Auxiliary Fuse Block.....	545
Auxiliary Lamp Relay Set.....	547
Auxiliary LED Lamp.....	211
Auxiliary Power Outlet.....	100
Axle Bumper, Rear.....	305
Axle Shaft Lock.....	304
Axle Tube Perch.....	300
Axle Tube Spring Perches.....	300
Axle Ventilator.....	304
Axle, Rear.....	302, 304

**B**

B-Pillar Channel.....	186
B-Pillar Quarter Panel Interior Post.....	60
Back Glass Molding Tool.....	193
Back Glass Weatherstrip.....	177
Back Panel, Seat.....	30
Back Window Glass.....	185
Back-Up Lamp Arm.....	96
Back-Up Lamp Lens.....	209-210
Back-Up Lamp Pigtail.....	211
Back-Up Lamp Switch.....	96
Back-Up Lamp Wire Harness.....	537
Back-Up Lens/Tailamp Gasket.....	210
Back-Up Switch Heat Shield.....	96
Back-Up Switch Mounting Set.....	96, 521
Backing Plate, Auto Shift Lens.....	124
Backing Plate, Brake.....	326
Baffle, Lifter Valley.....	412
Baffle, Oil Pan.....	391
Balancer Bolt.....	405
Ball Joint.....	277
Ball Joint Boot.....	279
Ball Joint Rivet Bolt.....	279
Ball Joint, Upper.....	279
Ball Stud, Accelerator Pedal.....	126
Banked Relay Panel.....	547
Bar, Traction.....	298
Base Molding, Armrest.....	49
Base, Air Cleaner.....	438
Base, Antenna.....	94
Base, Console Gauge.....	122
Battery.....	528
Battery Box.....	529
Battery Cable.....	530-531
Battery Cable Bolts.....	531
Battery Cable Clip, Oil Pan.....	531
Battery Cable Crimping Tool.....	533
Battery Cable Insulator.....	531
Battery Cable Retainer.....	531
Battery Cable Terminal.....	531
Battery Cable Terminal Protector Boot.....	531
Battery Carrying Strap.....	532
Battery Charger.....	532

Battery Clamp Retainer Bolt.....	529	Body Dent Removal Tools.....	264	Boot, Power Window Harness.....	544
Battery Cover.....	533	Body Fastener Bolt Set.....	218	Boot, Rear Alternator.....	449
Battery Cutout Switch.....	533	<b>Body Mount Bushing</b> .....	287	Boot, Rear Pushrod.....	312
Battery Decal.....	166	Body Mount Hardware.....	287	Boot, Shift.....	125
Battery Disconnect Position Decal.....	533	Body Side Molding.....	189	Boot, Shifter.....	525
<b>Battery Heat Shield</b> .....	529, 533	Body Side Molding Clip.....	189	Boots, Tie Rod End.....	278
Battery Hold Down.....	529	Body Side Molding Retainer Screw.....	189	Brace, Fender.....	230
<b>Battery Insulation</b> .....	532	Body Tools.....	264	Brace, Floor.....	238
<b>Battery Jump Starter</b> .....	532	Bodywork and Rust Repair Manual.....	144	Brace, Frame Rail.....	255
Battery Mat.....	532	Bolt Center Measuring Template, Wheel.....	337	Brace, Rear Frame Rail Floor.....	238
<b>Battery Mount</b> .....	528	Bolt Eye, Leaf Spring.....	301	Brace, Rear Under Seat Floor.....	239
Battery Owners Certificate.....	171	Bolt Lock Set, Exhaust Manifold.....	481	<b>Brace, Roof Panel</b> .....	240
Battery Post Adapter.....	531	Bolt Mounting, Fender Skirt.....	230	<b>Brace, Roof Side Rail</b> .....	240
Battery Post Cleaning Tools.....	533	Bolt Mounting, Sway Bar.....	283	Brace, Starter Motor.....	446
Battery Post Felt Washer.....	531	Bolt Set, Chassis.....	320	Brace, Trunk Floor.....	261
Battery Quick-Disconnect.....	533	Bolt Set, Engine.....	388-389	Brace, Trunk Gutter.....	261
Battery Relocation Set.....	528	<b>Bolt Set, Exhaust Manifold</b> .....	481	<b>Bracket, Throttle Cable</b> .....	473
Battery Side Terminal Wrench.....	533	Bolt Set, Fan Spacer.....	355	<b>Bracket Mounting, AC Compressor</b> .....	380-381
Battery Surge Protector.....	532	Bolt Set, Fan to Fan Clutch.....	355	Bracket Set, Throttle.....	507
Battery Terminal Protector.....	531	<b>Bolt Set, Motor Mount</b> .....	388	Bracket, AC Receiver.....	383
Battery Tray.....	529	Bolt Set, Thermostat Housing.....	369	Bracket, AC Relocation.....	381
Battery Tray Bolts.....	529	Bolt, A-Arm Shaft.....	281	Bracket, Accelerator Spring.....	470
Battery Tray Clamp.....	529	<b>Bolt, Alternator Case</b> .....	450	Bracket, Alternator.....	451
Bear, Teddy.....	132	<b>Bolt, Automatic Transmission Pan</b> .....	503	Bracket, Alternator for Headers.....	451
Bearing Race and Seal Driver.....	328	Bolt, Balancer.....	405	Bracket, Bellcrank Pivot Ball.....	521
Bearing Ring, 4-Speed Drive Gear.....	515	<b>Bolt, Ball Joint Rivet</b> .....	279	Bracket, Brake Hose.....	320
Bearing, Clutch Throwout.....	519	Bolt, Battery Clamp Retainer Bolt.....	529	<b>Bracket, Brake Hose Rear Axle</b> .....	320
<b>Bearing, Differential</b> .....	306	Bolt, Brake Caliper.....	324	Bracket, Brake Line.....	319
Bearing, Idler Arm.....	277	Bolt, Brake Caliper Hose.....	324	Bracket, Brake Proportioning Valve.....	317
Bearing, Lower Steering Shaft.....	103	<b>Bolt, Brake Hose Banjo</b> .....	320	Bracket, Brake/Clutch Pedal Support.....	130
Bearing, Packer.....	304	Bolt, Brake Line.....	320	Bracket, Bucket Seat Headrest.....	31
Bearing, Rear Axle.....	304	<b>Bolt, Bumper</b> .....	222	Bracket, Bumper.....	221
Bearing, Roller Pilot.....	516	Bolt, Crankshaft Pulley.....	404	Bracket, Carburetor Mount Linkage.....	470
Bearing, Wheel.....	328	Bolt, Differential Cover.....	307	Bracket, Carburetor Return Spring.....	470
Bellcrank Mount, Clutch.....	522	Bolt, Door Hinge.....	245	Bracket, Clutch Conversion.....	522
Bellcrank Pivot Ball Bracket.....	521	<b>Bolt, Fender</b> .....	230	Bracket, Console Mount.....	125
Bellcrank Pivot Ball, Frame Side.....	521	Bolt, Flexplate To Crankshaft.....	499	Bracket, Console To Floor Mounting.....	125
Bellcrank Seal.....	521	Bolt, Flywheel to Crankshaft.....	516	Bracket, Courtesy Lamp.....	61
Bellcrank, Clutch.....	522	Bolt, Header.....	478	<b>Bracket, Cruise Control Cable</b> .....	469
Bellhousing.....	516	Bolt, Hex Head.....	266	Bracket, Electric Fan.....	360
Bellhousing Dowel Pins.....	516	<b>Bolt, Hood Hinge</b> .....	226-227	Bracket, Engine Frame.....	387
Bellhousing Dust Shield.....	516	Bolt, Hood Latch Pilot.....	227	Bracket, Engine Pull.....	384
<b>Bellhousing to Block Hardware</b> .....	516	Bolt, Horn Mounting.....	111	Bracket, Fuel Filter.....	459
Bellhousing to Fork Boot.....	520	Bolt, Intake Manifold Stud.....	450	Bracket, Gas Line Support.....	460
Belt Conversion, Serpentine.....	403	Bolt, Leaf Spring.....	301	Bracket, Hood Louver.....	225
Belt, AC.....	363	Bolt, License Plate.....	138	Bracket, Idler Arm Frame.....	277
Belt, AC Compressor.....	380	Bolt, Main Cap.....	392	Bracket, Ignition Coil.....	430
Belt, Alternator.....	363, 449	<b>Bolt, Pressure Plate to Flywheel</b> .....	516	Bracket, Kickdown Cable.....	508
Belt, Power Steering.....	271, 363	Bolt, Ring and Pinion Installation Set.....	306	<b>Bracket, Kickdown Switch Mount</b> .....	508
Belt, Smog Pump.....	482	Bolt, Seat Belt Anchor.....	37	Bracket, License Plate.....	222
Bench Seat Console.....	121	Bolt, Shock.....	299	Bracket, Manual Choke Cable Mount.....	471
<b>Bench Seat Side Cover Fasteners</b> .....	30	Bolt, Shock Tower.....	299	Bracket, Morse Cable.....	469
Bezel Extension Molding, Park Lamp.....	188	Bolt, Steel.....	222	<b>Bracket, Oil Cooler</b> .....	398
Bezel Lens, Dash.....	67	Bolt, Steering Box Mounting.....	275	Bracket, Outer Mirror.....	251
Bezel Nut Tool, Ignition Switch.....	97	Bolt, Throttle Lever Arm.....	473	Bracket, Park Brake Cable Mounting.....	322
Bezel Nut, Ignition Switch.....	97	Bolt, Throttle Lever Arm Pinch.....	127	Bracket, Power Brake Booster Hose.....	313
<b>Bezel Retainer, Remote Mirror</b> .....	251	Bolt, Turn Signal Hold Down.....	106	Bracket, Power Steering Hose.....	272
Bezel Seal, Headlamp.....	203	Bolt, Water Outlet.....	369	Bracket, Proportioning Valve.....	317
Bezel, Console Gauge.....	122	<b>Bolt, Wheelhouse</b> .....	230	Bracket, Radiator Fan Shroud.....	350
Bezel, Console Gauge Cover.....	122	Bolts, Alternator Mounting.....	450	Bracket, Radio Support.....	87
Bezel, Dash.....	66, 95	Bolts, Battery Cable.....	531	Bracket, Rear View Mirror.....	63
Bezel, Defogger Switch.....	95	Bolts, Battery Cable Quick Release.....	531	Bracket, Return Spring Extension.....	520
Bezel, Fiber Optic Lamp Housing.....	205	Bolts, Battery Tray.....	529	Bracket, Seat.....	29
Bezel, Headlamp.....	202	Bolts, Cam.....	281	Bracket, Shift Cable.....	511
Bezel, Headlamp Dimmer Switch.....	95	Bolts, Cylinder Heads.....	389	Bracket, Shifter Linkage.....	511
Bezel, Ignition Switch.....	97	Bolts, Exhaust Manifold.....	481	Bracket, Smog Pump.....	482
Bezel, Park Lamp.....	205	Bolts, Fender to Cowl.....	218	Bracket, Speed Warning Cable.....	70
Bezel, Radio.....	86	<b>Bolts, Fuel Pump</b> .....	458	Bracket, Sun Visor.....	60
Bezel, Remote Mirror Door Panel.....	251	Bolts, Fuel Tank Mounting Strap.....	453	Bracket, Sway Bar.....	284
Bezel, Side Marker Lamp.....	207	<b>Bolts, Hood Hinge</b> .....	226	Bracket, Throttle Cable.....	472-473
Bezel, Taillamp.....	210	Bolts, Ignition Coil Brackets.....	430	<b>Bracket, Throttle Kickdown Cable</b> .....	473
Bezel, Wheel Insert.....	335	<b>Bolts, Intake Manifold</b> .....	413	Bracket, Throttle Valve Cable.....	508
Blade, Wiper.....	232	<b>Bolts, License Plate Mounting</b> .....	222	Bracket, Tire Inflator.....	260
Bleeder Screw Dust Caps.....	317	Bolts, Oil Pan.....	391, 394	Bracket, Transmission Cable.....	469
Bleeder Set, Hydraulic System.....	242	<b>Bolts, Starter Mount</b> .....	446	Bracket, Transmission Control Cable.....	511
Bleeder, Brake.....	329	Bolts, Tie Rod Sleeve.....	279	Bracket, Windshield Washer Jar.....	233
Block Side Screw-In Pivot Ball.....	521	<b>Bolts, Timing Cover</b> .....	402	<b>Brackets, Coilover Conversion</b> .....	297
Blower Motor Fan.....	374	<b>Bolts, Torque Converter</b> .....	499	Brackets, Condenser.....	381
<b>Blower Motor Fan, Heat/AC</b> .....	374	Bolts, Valve Cover.....	423	<b>Brackets, Drive-by-Wire</b> .....	126
Blower Motor Mounting Screw Set.....	374	<b>Bolts, Water Neck Mounting</b> .....	369	<b>Brackets, Grill</b> .....	217
<b>Blower Motor Relay Pigtail</b> .....	374	Bolts, Water Pump.....	367	Brackets, Grill Support.....	217
Blower Motor Resistor.....	374	<b>Bolts/Fasteners/Clips</b> .....	266-267	<b>Brackets, Power Steering</b> .....	269
<b>Blower Motor Resistor Pigtail</b> .....	374	Boot and Ring, Floor Shifter.....	512	<b>Brackets, Power Steering Pump</b> .....	270
<b>Blower Motor Resistor Screw</b> .....	374	Boot Retainer, Shift.....	125	Brake Adjusting Hole Cover.....	326
<b>Blower Motor, Heat/AC</b> .....	374	<b>Boot Snaps, Convertible Top</b> .....	241	Brake Adjustment Tool.....	329
Blower Relay.....	374	Boot, Ball Joint.....	279	Brake and Parts Cleaner.....	329
Blower Switch, Heater/AC.....	374	Boot, Bellhousing to Fork.....	520	Brake Backing Plate.....	325
Bluetooth Interface.....	88	Boot, Clutch Fork.....	520	Brake Backing Plate Gasket.....	325
Bluetooth Receiver Adapter.....	88	Boot, Clutch Pushrod.....	521	Brake Bleeder Tool.....	329
Body Alignment Shim.....	218-219	Boot, Convertible Top.....	241	Brake Bleeder Valve.....	317
Body Bolt Set.....	219	Boot, Park Lamp Socket.....	206	Brake Bleeder Wrench.....	329



Brake Booster Rod.....	312
Brake Booster Sleeve.....	312
Brake Booster, Power.....	312
Brake Cable Clip.....	319
Brake Cable Guide.....	322
Brake Cable Mounting Bracket, Park.....	322
<b>Brake Cable Pliers</b> .....	322
Brake Cable Retainer, Park.....	322
<b>Brake Caliper</b> .....	324
Brake Caliper Hose Bolt.....	324
Brake Caliper Mounting Bracket.....	324
Brake Caliper Mounting Hardware.....	324
Brake Caliper O-Ring.....	324
Brake Caliper Rebuild Set.....	323
Brake Caliper/Drum Paint System.....	323
Brake Check Valve.....	315
<b>Brake Combination Valve</b> .....	316
Brake Conversion Hose.....	311
Brake Cylinder Hone Tool.....	329
Brake Distribution Block.....	315
Brake Drums.....	326
Brake Fluid.....	329
Brake Hardware Set.....	326
Brake Hold-Off Valve.....	315
Brake Hose.....	320
<b>Brake Hose Banjo Bolt</b> .....	320
<b>Brake Hose Bracket</b> .....	320
Brake Hose Copper Washer.....	320
Brake Lamp Relay Set.....	547
Brake Lamp Switch.....	96
Brake Lamp Switch Retaining Clip.....	96
Brake Line.....	293, 318
Brake Line Bolt.....	320
Brake Line Bracket.....	319
<b>Brake Line Clips</b> .....	319
Brake Line Fitting.....	319
Brake Line Shield.....	318
<b>Brake Lines, Master Cylinder</b> .....	313
Brake Manual.....	145
<b>Brake Master Cylinder</b> .....	313-314
Brake Master Cylinder Rebuild Set.....	315
Brake Master Cylinder, Electric High Power.....	313
<b>Brake Master Cylinder/Booster</b> .....	311
Brake Pad Retainer Spring.....	325
Brake Pad Spreader.....	329
Brake Pad Trim Plate.....	129
<b>Brake Pads</b> .....	325
Brake Pedal Assembly.....	130
Brake Pedal Bushing.....	130
Brake Pedal Clevis.....	130
Brake Pedal Pad.....	129
Brake Pedal Rod Extension.....	130
Brake Pedal, Park.....	130
Brake Proportioning Valve Bracket.....	317
Brake Release Handle, Park.....	322
Brake Rotor.....	323
<b>Brake Rotor/Drum Nut</b> .....	323
Brake Set, Front.....	310
Brake Set, Rear.....	310
Brake Shoe Adjusting Lever Spring.....	326
Brake Shoe Adjusting Screw Spring.....	326
Brake Shoe Guide Plate.....	326
Brake Shoe Retaining Pin.....	326
Brake Shoes.....	326
Brake Spring Pliers.....	329
Brake Spring Removal Tool.....	329
Brake Warning Switch Socket & Wiring.....	315
Brake Wheel Cylinder, Drum.....	326
Brake, Parking.....	321
Brake/Clutch Pedal Assembly.....	130
Brake/Clutch Pedal Pin.....	130
Brake/Clutch Pedal Support Bracket.....	130
Brakes, Disc.....	295, 302
<b>Breather Cap</b> .....	420
Breather, Valve Cover.....	420
Brochure, Sales.....	141
Brodie Knob, Steering Wheel.....	137
<b>Brushes, Start Motor</b> .....	446
<b>Bucket Seat Back Lock</b> .....	29
Bucket Seat Conversion Bracket.....	29
<b>Bucket Seat Extender</b> .....	29
Bucket Seat Frame Support.....	239
Bucket Seat Headrest Bracket.....	31
<b>Bucket Seat Headrest Guides</b> .....	31
Bucket Seat Headrest Lock.....	31
Bucket Seat Molding.....	30
Bucket Seat Mounting Adapter.....	33-34
Bucket Seat Support.....	239
Bucket Seats.....	32-35
<b>Bucket, Headlamp Mounting</b> .....	203
Buckle Cover, Seat Belt.....	36

<b>Bulb and Socket, Gauge</b> .....	81
Bulb Covers, Light.....	83
Bulb, Console Gauge.....	123
Bulb, Dome Lamp.....	61
Bulb, Gauge Lamp.....	83
<b>Bulb, Headlamp</b> .....	196-199
Bulb, Instrument Panel Lamp.....	67
<b>Bulb, Tachometer</b> .....	81
Bulb, Trunk Lamp.....	258
<b>Bulbs, Lamp</b> .....	214-215
Bump Stop, Lower Control Arm.....	281
<b>Bumper Bolt</b> .....	222
Bumper Bracket.....	221
Bumper Guard.....	221
Bumper Guard Cushion.....	221
Bumper Jack.....	260
Bumper Sticker.....	171
Bumper to Body Seal.....	181
Bumper, Control Arm.....	282
Bumper, Filler Panel.....	220
Bumper, Front.....	220
Bumper, Glove Box Door.....	120, 183
Bumper, Glove Box Door Arm.....	99
Bumper, Hood.....	182
<b>Bumper, Hood Adjuster</b> .....	182
Bumper, License Plate.....	183
Bumper, Rear.....	220
Bumper, Rear Axle.....	305
<b>Bumper, Rear Axle Pinion</b> .....	305
Bumper, Rear Seat Filler Panel.....	29
Bumper, Seat Back.....	29, 183
Bumper, Traction Bar.....	298
Bumper, Trunk Lid.....	183
Bumper, Window.....	187
Bumpers, Door.....	183
Bumpers, Tailgate.....	180
Bushing & Hardware, Radiator Support.....	218
Bushing Cap, Control Arm.....	282
Bushing Installation/Removal Tool.....	282
Bushing Kevlar, Pilot.....	516
Bushing Set, Polyurethane.....	301
<b>Bushing, Body Mount</b> .....	287
Bushing, Brake Pedal.....	130
Bushing, Clutch Pedal.....	130
Bushing, Clutch Pivot.....	521
Bushing, Control Arm.....	277, 281-282
Bushing, Convertible Top.....	243
Bushing, Door Hinge.....	245
Bushing, Leaf Spring.....	301
Bushing, Leaf Spring Eye.....	301
Bushing, Mirror Mount.....	62
Bushing, Radiator Hose Reducer.....	352
Bushing, Shifter.....	512
Bushing, Sway Bar.....	284
Bushing/Tip Set, Sun Visor.....	60
<b>Bushings, Shift Lever</b> .....	524
<b>Bushings, Sway Bar</b> .....	285
Button, Horn.....	108
Button, Shift.....	513

**C**

C-Clip Eliminator.....	304
Cable Bracket, Transmission Control.....	511
Cable Clip, Kick Panel Vent.....	8
<b>Cable Equalizer, Parking Brake</b> .....	322
Cable Insulator, Battery.....	531
Cable Mounting Bracket, Park Brake.....	322
Cable Retainer, Park Brake.....	322
Cable Tie.....	494
Cable, Accelerator Lever.....	470
Cable, Antenna.....	94
Cable, Antenna Lead.....	94
Cable, Battery.....	531
Cable, Convertible Top.....	242
Cable, Heater Control.....	375
<b>Cable, Hood Release</b> .....	228
Cable, Kick Panel Vent.....	8
Cable, Kickdown.....	473
<b>Cable, Park Brake</b> .....	321
<b>Cable, Shifter</b> .....	511
Cable, Speed Warning Control.....	70
Cable, Speedometer.....	70
Cable, Throttle.....	472
Cable, Trans Throttle Valve Control.....	507
<b>Cable, Trunk Release</b> .....	257
Cables, Battery.....	530
Caliper O-Ring, Brake.....	324
<b>Caliper, Brake</b> .....	324
Cam Bolt Set.....	281
Cam Spacer, Window Regulator.....	187

Cam, Horn Contact.....	111
Cam, Turn Signal.....	106
Cam, Turn Signal Cancelling.....	106
<b>Cams &amp; Valvetrains Manual</b> .....	145
<b>Camshaft Gear Drive</b> .....	401
Camshaft Installation Tool.....	384
Camshafts.....	408
Canister, Vacuum.....	378
Canvas Top Cleaner.....	149, 243
<b>Cap, AC Service</b> .....	378
<b>Cap, Distributor</b> .....	428-429
Cap, Front Wheel Bearing Grease.....	328
Cap, Gas.....	455
Cap, Oil.....	421
<b>Cap, Oil Breather</b> .....	420-421
Cap, Power Steering.....	269
<b>Cap, Radiator</b> .....	348
Cap, Radiator Overflow Jar.....	349
Cap, Seat Pivot.....	30
Cap, Vacuum.....	468
Cap, Valve Stem.....	337
Cap, Windshield Washer Jar.....	234
Cap, Windshield Wiper Arm.....	234
Cap/Hat.....	135
Car Care Products.....	148-150
Car Cover.....	4-5
Car Cover Antenna Grommet.....	5
Car Cover Gust Guard.....	5
Car Cover Lock and Cable Set.....	5
Car Cover Storage Bag.....	5
<b>Car Magnet</b> .....	137
Carburetor.....	464-465
Carburetor Accelerator Pump Squirters.....	467
Carburetor Adapter.....	468
Carburetor Air Cleaner Gasket.....	466
Carburetor Baffle Plate.....	469
Carburetor Ball Stud Set.....	470
Carburetor Base Gasket.....	466
Carburetor Cable Brackets.....	473
Carburetor Calibration Set.....	467
Carburetor Choke Set.....	471
Carburetor Cover.....	469
<b>Carburetor Float Bowl Screw</b> .....	469
Carburetor Gasket.....	466
<b>Carburetor Heat Shield</b> .....	468
Carburetor Installation Set.....	466
Carburetor Insulator.....	468
Carburetor Insulator Spacer.....	468
Carburetor Jet.....	467
Carburetor Linkage Plate.....	469
Carburetor Main Body.....	464
<b>Carburetor Manuals</b> .....	143
Carburetor Mount Linkage Bracket.....	470
Carburetor Needle and Seat.....	469
Carburetor Power Valve.....	467
Carburetor Rebuild Set.....	466
Carburetor Rebuild/Repair Set.....	467
Carburetor Return Spring.....	470
Carburetor Return Spring Bracket.....	470
Carburetor Rod Clip.....	469
Carburetor Secondary Spring.....	470
Carburetor Stud.....	470
Carburetor Throttle Stud.....	473
Carburetor Wedge Plate.....	469
Card, Rally Wheel Instruction.....	169
Card, Seat Belt Instruction.....	167
Card, Spare Wheel Lock Instruction.....	169
Cargo Area Carpet.....	259
Cargo Cover, Wagon.....	259
<b>Carnauba Wax</b> .....	148
Carpet.....	6-7
Carpet Dye.....	153
Carpet Guard, Firewall.....	9
Carpet Sound Deadener.....	12
Carpet, Cargo Area.....	259
Carpet, Trunk.....	259
Case, AC Evaporator.....	382
Case, Heater.....	373
Cast Iron Manifold Dressing.....	480
<b>Castle Nut Set</b> .....	328
<b>Catalytic Converter</b> .....	485
Catalytic Converter Decal.....	170
<b>Catalytic Converter Heat Shield</b> .....	485
Catch Tank, Oil.....	398
Catch, Trunk Lid.....	257
Center Cap, Steering Wheel.....	119
Center Cap, Wheel.....	334, 339-340
Center Console.....	121
Center Drag Link.....	277
Center Outlet, AC.....	376
Certificate, Battery Owners.....	171

Certificate, Warranty .....	171, 174	Clips, Fuel Line .....	319	Console Mounting Bracket .....	125
<b>Chain, Timing</b> .....	401	Clips, Headliner Side Molding .....	59	Console Plate .....	120
Channel Liner, Window .....	187	<b>Clips, Hubcap</b> .....	335	Console Seat Belt Clip .....	37
Channel, Door Glass Vertical Run .....	186	Clips, Molding .....	195	Console Shift Lens .....	124
Charcoal Canister, Fuel Vapor .....	459	<b>Clips, Rocker Panel Molding</b> .....	191	Console Shift Plate .....	124
Chassis Bolt Set .....	320	Clips, Window Molding .....	194	Console Shift Plate Screw .....	124
Chassis Wiring Harness .....	540-541	<b>Clips/Fasteners/Bolts</b> .....	266-267	Console Shifter Swivel .....	512
Check Valve, Power Brake Booster .....	312	Clock .....	69, 138	Console To Floor Mounting Bracket .....	125
Chisel Tool, Seam Buster .....	264	Clock Plate .....	69	Console Wiring Harness .....	537
Chocks, Wheel .....	147	Clock Wiring Harness .....	537	Console, Bench Seat .....	121
Choke Cable, Manual .....	471	Clock, Quartz Conversion .....	82	Console, Center .....	121
Choke Coil, Thermostatic .....	471	Clutch Adjustment Rod .....	521	Console, Floor .....	120-121
Choke Rod .....	471	Clutch Bellcrank .....	522	Contact Plate, Horn Button .....	107
Choke Set, Carburetor .....	471	Clutch Bellcrank Mount .....	522	Contact, Horn Button .....	107
Choke Thermostat Cover .....	471	Clutch Conversion Bracket .....	522	Control Arm .....	277
Choke Thermostat Mounting Screw .....	471	Clutch Disc .....	518-519	Control Arm Bump Stop .....	281
<b>Cigarette Lighter</b> .....	100	Clutch Fluid Reservoir .....	519	Control Arm Bumper .....	282
<b>Cigarette Lighter Heating Element</b> .....	100	Clutch Fork .....	520	Control Arm Bushing .....	277, 281-282
<b>Cigarette Lighter Housing</b> .....	100	Clutch Fork Boot .....	520	Control Arm Bushing Cap .....	282
<b>Cigarette Lighter Retainer</b> .....	100	Clutch Fork Mounting Stud .....	520	Control Arm Polyurethane Bushings .....	282
<b>Cigarette Lighter Wiring Harness</b> .....	537	Clutch Fork Repair Spring .....	520	Control Arm Shaft .....	281
<b>Circuit Add-On Insulators</b> .....	545	Clutch Fork Return Spring .....	520	Control Arm Shaft Upper .....	281
Circuit Board, Printed .....	67	Clutch Housing Cover .....	517	Control Arm, Lower .....	281
Clamp, AC Evaporator Tube .....	382	Clutch Linkage Replacement Set .....	522	Control Arm, Tubular Lower .....	280
<b>Clamp, AC Hose</b> .....	378	Clutch Linkage Rod .....	520	Control Arm, Tubular Upper .....	280
Clamp, Battery Tray .....	529	Clutch Master/Slave Cylinder, Adjustable .....	519	Control Arm, Upper .....	281
Clamp, Car Cover .....	5	Clutch Pedal Assembly .....	130	Control Arms .....	280-281
Clamp, Distributor Hold Down .....	426	Clutch Pedal Bushing .....	130	Control Cable, Air Flow .....	375
<b>Clamp, Exhaust</b> .....	484-485	Clutch Pedal Pad .....	129	<b>Control Lever Pivot Pin</b> .....	104
Clamp, Fuel Hose .....	461	Clutch Pedal Pad Trim Plate .....	129	<b>Controller, Electric Fan</b> .....	362
Clamp, Leaf Spring Rebuild Set .....	301	Clutch Pivot Ball .....	521	Conversion Kit, V8 Oil Pan .....	390
Clamp, Metal Line .....	319	Clutch Pivot Bushing .....	521	<b>Conversion Set, Front Disc Brake</b> .....	308-310
Clamp, Muffler .....	485	Clutch Pushrod .....	520-521	<b>Conversion Set, Power Door Lock</b> .....	542
Clamp, PCV Valve .....	419	Clutch Pushrod Boot .....	521	Conversion Set, STV Valve .....	383
Clamp, Power Steering Hose .....	272	Clutch Pushrod Retainer Clip .....	521	<b>Conversion, Electric Kickdown</b> .....	507
Clamp, Smog Pump Hose Tower .....	482	Clutch Release Fork .....	520	Conversion, Leaf Spring .....	299
<b>Clamp, Soft Line</b> .....	319	<b>Clutch Reservoir, Remote</b> .....	519	Conversion, Rear Disc Brake .....	309
Clamp, Steering Column .....	102	Clutch Rod Cover/Seal .....	521	<b>Converter, Torque</b> .....	499
<b>Clamp, Tie Rod End</b> .....	279	Clutch Throwout Bearing .....	519	<b>Convertible Front Tack Strip</b> .....	242
Clamp, Vacuum Hose .....	461	Clutch, Fan .....	355	Convertible Pillar Post Weatherstrip .....	180
Clamp, Water Pump Bypass Hose .....	365	<b>Clutch/Flywheel Housing Cover</b> .....	517	<b>Convertible Rear Tack Strip Bow</b> .....	242
Clamp, Wire Harness .....	549	Coat Hanger Hook .....	60	Convertible Top .....	241
Clamps .....	494	Coil Cover .....	430	Convertible Top Binding End Clip .....	241
Cleaner, Canvas Top .....	149, 243	Coil Pack Shield .....	431	Convertible Top Boot .....	241
Cleaner, Upholstery .....	149	Coil Spring .....	298	<b>Convertible Top Boot Snaps</b> .....	241
Cleaner, Vinyl Top .....	149, 243	Coil Spring Decal .....	172	Convertible Top Boot Storage Bag .....	241
Cleaner, Wheel & Tire .....	150	Coil Spring Insulator .....	298	Convertible Top Bushing .....	243
Clevis, Brake Pedal .....	130	<b>Coil Spring Isolators</b> .....	298	Convertible Top Cable .....	242
Clip, AC Condenser Check Valve .....	381	Coil Spring Perch .....	298	Convertible Top Cylinder .....	242
Clip, Body Side Molding .....	189	Coil Spring Seat .....	298	Convertible Top Frame Weatherstrip .....	180
Clip, Brake Cable .....	319	Coil Spring Spacer, Front .....	298	<b>Convertible Top Header Bow Windlace</b> .....	242
Clip, Brake Lamp Switch Retaining .....	96	Coil Spring, Door Panel .....	53	Convertible Top Hose .....	242
Clip, Carburetor Rod .....	469	Coil Wires .....	431	Convertible Top Hose Clip .....	242
Clip, Clutch Pushrod Retainer .....	521	<b>Coil, Ignition</b> .....	429-431	Convertible Top Knuckle Hook .....	243
Clip, Console Gauge Mounting .....	123	<b>Coilover Conversion Brackets</b> .....	297	Convertible Top Latch .....	243
Clip, Console Seat Belt .....	37	<b>Coilover Shock</b> .....	297	Convertible Top Latch Screw .....	243
Clip, Convertible Top Binding End .....	241	<b>Coilover, Front</b> .....	297	Convertible Top Manual .....	141
Clip, Convertible Top Hose .....	242	Cold Weld .....	351	Convertible Top Molding Clip .....	241
Clip, Convertible Top Molding .....	241	Color Bar, Radio .....	87	Convertible Top Motor .....	242
Clip, Dash Pad .....	67	Column Installation, Steering .....	103	Convertible Top Motor Grommet .....	242
Clip, Door Jamb Windlace .....	179	<b>Column Lock Plate Retainer</b> .....	104	Convertible Top Pad .....	241
Clip, Door Latch Rod .....	246	Column Shift Cable Linkage .....	511	Convertible Well Liner .....	241
Clip, Door Latch Rod Center .....	246	Column Shift Knob .....	105	Coolant Additive .....	351
Clip, Door Ledge Molding .....	189	<b>Combination Valve, Brake</b> .....	316	<b>Coolant Filter</b> .....	351
Clip, Firewall Pad .....	9	<b>Compass Gauge</b> .....	81	<b>Coolant Hose Adapter</b> .....	351
<b>Clip, Fuel Line</b> .....	460-461	<b>Compression Fittings, Transmission</b> .....	506	<b>Coolant Reservoir Tank</b> .....	349
Clip, GT-Sport Front .....	286	<b>Compressor Block Fittings</b> .....	380	Coolant Temperature Sending Unit .....	346
Clip, Headliner Bow .....	59	Compressor Ground Wire, AC .....	378	<b>Cooler, Power Steering</b> .....	272
<b>Clip, Heater Box Control Cable</b> .....	373	Compressor Tool, Valve Spring .....	384	Cooling Fan Shutdown .....	361
Clip, Heater Control Lens .....	375	<b>Compressor, AC</b> .....	379	Cooling Fan Spacer .....	355
Clip, Heater Core Mounting .....	372	Condenser Brackets .....	381	<b>Cooling Fan, Electric</b> .....	356-359
Clip, Heater Hose .....	351	Condenser Check Valve Clip, AC .....	381	<b>Cooling Fan, Radiator</b> .....	354
Clip, Kick Down Retainer .....	127	<b>Condenser, AC</b> .....	381	<b>Cooling Oil Pan, Transmission</b> .....	506
Clip, Kickdown Rod .....	508	Condenser, Ignition .....	429	Cooling System Component Set .....	345
Clip, Lower Fan Shroud .....	350	Connector, Park Brake Cable .....	322	Cooling System Decal .....	164
Clip, Oil Line .....	123	Connector, Subframe .....	294	Cooling System Zinc Anode .....	360
Clip, Oil Pan Battery Cable .....	531	Console .....	120-121	Core Support Connector .....	549
Clip, Park Brake Lamp Switch .....	97	Console Assembly .....	120	Core, AC Evaporator .....	382
Clip, PCV Valve .....	419	Console Emblem .....	125	Corrosion Barrier Coating .....	151
Clip, Power Window Switch .....	51	Console Gauge Assembly .....	122	Counter Stool .....	136
Clip, Rear Window Molding .....	194	Console Gauge Bezel .....	122	Countershaft Gear Bearing Washer .....	515
Clip, Shift Knob .....	512	Console Gauge Bulb .....	123	Coupler Hardware, Steering .....	273
Clip, Shift Rod Retainer .....	525	Console Gauge Hardware .....	123	Coupling Joint, Steering .....	103
Clip, Speedometer Cable .....	70	Console Gauge Harness .....	123	Courtesy Lamp Bracket .....	61
Clip, Speedometer Drive Gear .....	70	Console Gauge Lens .....	122	Courtesy Lamp Set .....	61
Clip, Tailgate Remote Control .....	257	Console Gauge Mounting Clip .....	123	Courtesy Lamp Wire Harness .....	537
Clip, Windshield Molding .....	194	Console Gauge Mounting Plate .....	122	Cove Molding .....	192
<b>Clips Retaining, Taillight Harness</b> .....	211	Console Gauge Oil Line .....	123	Cover, AC Delete .....	378
<b>Clips, Brake Line</b> .....	319	<b>Console Gauge Oil Line Grommet</b> .....	123	Cover, Brake Adjusting Hole .....	326
Clips, Door Panel .....	47	Console Gauge Pod .....	122	Cover, Car .....	4-5
<b>Clips, Fender Splash Shield</b> .....	181	Console Gauges .....	122-123	Cover, Cargo .....	259



Cover, Clutch Housing.....	517
Cover, Coil.....	430
<b>Cover, Differential.....</b>	<b>306-307</b>
Cover, Flywheel Housing.....	517
<b>Cover, Harmonic Balancer.....</b>	<b>405</b>
<b>Cover, Headlamp.....</b>	<b>201</b>
Cover, Ignition Coil.....	418
Cover, Key.....	249
Cover, Kick Panel Vacuum Actuator.....	8
Cover, Lock Plate.....	104
<b>Cover, Master Cylinder.....</b>	<b>314</b>
Cover, Oil Pump.....	392
<b>Cover, Pedal.....</b>	<b>128-129</b>
Cover, Quarter Stick Shifter.....	510
Cover, Rear Radio Speaker.....	88
Cover, Seat Belt Buckle.....	36
Cover, Seat Belt Retractor.....	37
Cover, Seat Headrest.....	31
Cover, Spare Tire.....	259
Cover, Steering Column.....	104
Cover, Steering Column to Floor.....	104
Cover, Steering Wheel.....	119
<b>Cover, Timing.....</b>	<b>400-401</b>
<b>Cover, Torque Converter.....</b>	<b>501</b>
Cover, Vacuum Advance.....	427
<b>Cover, Valve.....</b>	<b>414-415, 417</b>
Cover, Vinyl Floor.....	7
Cover/Seal, Clutch Rod.....	521
Covers, Pedal.....	126
Cowl Hood Screen.....	223
Cowl Induction Hood.....	223
Cowl Panel, Inner.....	231
Cowl Panel, Lower.....	231
Cowl Panel, Upper Inner.....	231
<b>Cowl Tag Rivets.....</b>	<b>231</b>
Cowl Top Vent Grill Panel.....	231
<b>Cowl Vent Panel Side Seals.....</b>	<b>231</b>
Crank Handle, Inner Window.....	52-53
Crankcase Evacuation System.....	419
Crankcase Vent Filter.....	439
Crankcase Vent Tube.....	439
Crankcase Vent Tube Mounting Set.....	439
Crankcase Vent Valve Service Tag.....	166
<b>Crankshaft Pulley.....</b>	<b>403-404</b>
Crankshaft Pulley Bolt.....	404
Crankshaft Turning Socket.....	384
Cross Rail Filler, Rear.....	255
Cross Rail, Rear.....	255
<b>Crossmember, Transmission.....</b>	<b>293, 498</b>
<b>Crossover X-Pipe.....</b>	<b>483</b>
<b>Cruise Control Cable Bracket.....</b>	<b>469</b>
Cruise Control Decal.....	169
Cruise Control Unit.....	105
Crush Sleeve, Pinion Gear.....	304
Cup, Door Handle.....	52
<b>Cupped Fender Washer.....</b>	<b>230</b>
Curb Feelers.....	336
Cushion, Bumper Guard.....	221
Cushion, Seat.....	28
<b>Custom Trim Plates.....</b>	<b>88</b>
Cutout Exhaust, Electric.....	492
Cylinder Head Bolts.....	389

**D**

Damper Pad, Insulation.....	11
Damper, Harmonic.....	405
Dash Ashtray.....	101
Dash Bezel.....	66, 95
Dash Clock.....	69
Dash Gauge Lens.....	67
<b>Dash Gauges.....</b>	<b>68-69, 75-79</b>
Dash Insert.....	67
Dash Knob Set.....	95
<b>Dash Louver.....</b>	<b>376</b>
Dash Pad.....	66
Dash Pad Clip.....	67
Dash Pad Protector.....	66
Dash Panel.....	219
Dash Panel Emblem.....	67
Dash Panel Light Dimmer.....	83
Dash Panel Wiring Harness.....	82
Dash to Back-Up Switch Wiring Harness.....	537
Dash Trim Molding.....	66
Dash Vent Outlet.....	376
Dash Vent Outlet Assembly.....	376
Dash Vent Screw.....	375
Dealer Accessory Price List.....	142
Dealer Service Tag Decal.....	166
Decal.....	173
Decal Applicator.....	175

Decal Tag Scraper Tool.....	174
Decal, AC.....	166, 169-170
Decal, Air Cleaner.....	162
Decal, Air Filter Service Instructions.....	165
Decal, Air Shock.....	172
Decal, Astro Ventilation Window.....	169
Decal, Battery.....	166
Decal, Battery Disconnect Position.....	533
Decal, Berger Chevrolet.....	166
Decal, Catalytic Converter.....	170
Decal, Coil Spring.....	172
Decal, Cooling System.....	164
Decal, Cruise Control.....	169
Decal, Dealer Add-On Accessory.....	171
Decal, Disc Brake Shield.....	172
Decal, Emissions System.....	165
Decal, Fan Shroud.....	164
Decal, Fuel Recommendation.....	172
Decal, GM Door Jamb.....	171
Decal, Jacking Instruction.....	168
Decal, Leaf Spring.....	172
Decal, Medalist Body.....	173
Decal, Mirror.....	171
Decal, Nova SS.....	173
Decal, Oil Filter.....	166
Decal, Positraction.....	167
Decal, Push Start Warning.....	172
Decal, Rally Nova Hood.....	173
Decal, Shock.....	172
Decal, Spare Tire.....	167
Decal, Spirit of America Stripes.....	175
Decal, Tire Pressure.....	168
Decal, Unleaded Fuel Only.....	173
Decal, Valve Cover.....	163
Decal, Vehicle Maintenance.....	171
Decal, Washer Bottle.....	167, 233
Decal, Wheel Ornament.....	335
Decal, Window.....	169
Decal, Yenko.....	173
Decals.....	164-172
<b>Decals, Wheel Cover Spinners.....</b>	<b>335</b>
Deep Tub Inner Wheel Housing.....	295
Deflector Duct, Air.....	373
Deflector, Air Outlet.....	376
Defogger Switch Bezel.....	95
<b>Defroster Duct Hose.....</b>	<b>375</b>
Defroster Vent Assembly.....	375
Degree Wheel Tool.....	384
Delete Cover, AC.....	378
<b>Delete Plate, Heater.....</b>	<b>373</b>
Delete Plate, Radio.....	86
Detailing Scraper Tool.....	174
Diagram, Wiring.....	142
Diaphragm, Master Cylinder.....	315
Diaphragm, Vacuum Secondary.....	468
Dielectric Grease.....	437
<b>Differential Bearing Set.....</b>	<b>306</b>
<b>Differential Cover.....</b>	<b>306-307</b>
Differential Cover Bolt.....	307
Differential Cover Filter/Mag.....	307
Differential Cover Gasket.....	307
Differential Tag, Positraction.....	305
<b>Differential, 3rd Member.....</b>	<b>303</b>
Differential, Locking.....	304
Differentials Manual.....	145
Digital Gauges.....	74
Digital Multimeter.....	384
<b>Dimmer Switch, Headlamp.....</b>	<b>95, 104</b>
Dimmer, Dash Panel Light.....	83
Dipstick Tube Seal, Oil.....	394
Dipstick, Oil.....	395
Dipstick, Oil Pan.....	391
Dipstick, Transmission.....	503
Disc Brake Caliper Bolt Sleeve.....	324
<b>Disc Brake Conversion Nut.....</b>	<b>323</b>
<b>Disc Brake Conversion, Front.....</b>	<b>308-310</b>
Disc Brake Conversion, Rear.....	309
<b>Disc Brake Drop Spindle.....</b>	<b>327</b>
Disc Brake Shield Decal.....	172
<b>Disc Brake Spindle.....</b>	<b>327</b>
Disc, Clutch.....	518-519
Disconnect Switch, Battery.....	546
<b>Distributor.....</b>	<b>424-425</b>
Distributor Advance Curve Set.....	427
<b>Distributor Cap.....</b>	<b>428-429</b>
Distributor Gasket.....	426
<b>Distributor Gear.....</b>	<b>426</b>
Distributor Hold Down Clamp.....	426
Distributor Housing Shims.....	426
Distributor Intermediate Shaft.....	426
Distributor Lead.....	426

<b>Distributor Rotor.....</b>	<b>428-429</b>
Distributor Stud.....	426
Distributor Vacuum Advance.....	427
Distributor Vacuum Line.....	426
Distributor Vacuum Tee.....	427
Distributor Washer.....	426
Distributor Wire Grommet.....	426
Distributor Wire Harness.....	427
<b>Distributor, Engine.....</b>	<b>424-425</b>
Divider, Trunk.....	256
<b>Dome Lamp.....</b>	<b>61</b>
Dome Lamp Base.....	61
Dome Lamp Bulb.....	61
Dome Lamp Dimmer.....	61
Dome Lamp Lens.....	61
Dome Lamp Screw.....	61
Dome Lamp Switch.....	61
Dome Lamp Wire Harness.....	61
Door Aligning Bar.....	264
Door Alignment Wedge.....	245
Door Bushing Tool.....	264
Door Edge Guard.....	147
Door Frame Weatherstrip.....	178
Door Glass.....	184
Door Glass Assembly.....	184
Door Glass Channel.....	177
Door Glass Frame.....	185
Door Glass Roller Washers.....	187
Door Glass Vertical Run Channel.....	186
Door Handle Clip.....	51
Door Handle Cup.....	52
Door Handle Gaskets.....	247
Door Handle Mechanism, Inner.....	52
Door Handle O-Ring.....	247
Door Handle Push Button, Outer.....	247
Door Handle Removal Tool.....	51
Door Handle Spring.....	245
<b>Door Handle, Inner.....</b>	<b>52-53</b>
<b>Door Handles, Outer.....</b>	<b>247, 542-543</b>
Door Hanger Tool.....	264
Door Hinge.....	244
Door Hinge Adjuster Tool.....	264
Door Hinge Arm.....	245
Door Hinge Bolt.....	245
Door Hinge Bushing.....	245
Door Hinge Pin.....	245
Door Hinge Pin Popper.....	264
Door Hinge Repair Set.....	245
Door Hinge Roller Detent.....	245
<b>Door Hinge Screws.....</b>	<b>245</b>
Door Jamb Decal, GM.....	171
Door Jamb Seal, U-Shape.....	179
Door Jamb Switch.....	61
Door Jamb Vent Grill.....	244
Door Jamb Windlace.....	179
Door Jamb Windlace Clip.....	179
Door Latch.....	245
Door Latch Clips.....	51
Door Latch Rod Center Clip.....	246
Door Latch Rod Clip.....	246
Door Latch Screws.....	246
Door Ledge Molding Clip.....	189
<b>Door Lock.....</b>	<b>248</b>
Door Lock Control Bumper.....	183
<b>Door Lock Conversion Set, Power.....</b>	<b>542</b>
Door Lock Cylinder Gasket.....	249
Door Lock Cylinder Retainer.....	249
<b>Door Lock Knob.....</b>	<b>51</b>
Door Lock Knob Ferrule.....	51
Door Lock Knobs.....	50
Door Lock Pawl.....	249
Door Lock Rod.....	246
Door Lock Striker.....	246
Door Lock Striker Plate.....	246
Door Mechanism Return Spring.....	52
<b>Door Mirror, Outer.....</b>	<b>250-251</b>
Door Opener, Remote.....	542
Door Panel Clips.....	47
Door Panel Coil Spring.....	53
Door Panel Emblem.....	47
<b>Door Panel Insulation.....</b>	<b>12</b>
Door Panel Molding, Interior.....	47
Door Panel Plugs.....	47
Door Panel Remote Mirror Bezel.....	251
Door Panel Tool.....	47
Door Panel, Interior.....	40-46
Door Patch Panel.....	244
Door Pull Handle.....	49
Door Rubber Bumper.....	183
Door Shell/Skin.....	244
Door Sill Plate.....	9

Door Spring Tool .....	264
<b>Door Striker</b> .....	246
Door Striker Bolt Washer .....	246
<b>Door Striker Screw</b> .....	246
Door Switch, Power .....	51
Door Weatherstrip Fastener .....	179
Door Weatherstrip Plug .....	179
Door Window Frame Molding .....	190
<b>Door Window Inner Sash Channel</b> .....	186
Door Window Roller .....	187
<b>Door Window Sash Channel</b> .....	186
Door Window Track .....	187
Door, Fuel .....	222
Door, Glove Box .....	99
Double Flaring Tool .....	329
Dowel Pins, Bellhousing .....	516
Down Pipe, Exhaust Manifold .....	483
Drag Link .....	277
Drag Link Adapter .....	278
Drain Plug Gasket, Oil Pan .....	393
<b>Drain Plug, Oil Pan</b> .....	393
Drain Plug, Transmission Case .....	515
Drain Plug, Transmission Pan .....	502
Drink Holder .....	138
Drinking Glasses .....	133
Drip Rail Support .....	240
Drive Gear Bearing Ring, 4-Speed .....	515
<b>Drive-by-Wire Brackets</b> .....	126
Driver, Bearing Race and Seal .....	328
Driveshaft Safety Loop .....	303
Driveshaft U-Joint .....	303
Driveshaft, Oil Pump .....	391
Drum Brake Adjuster .....	326
Drum Brake Spindle .....	327
Drum Brake Wheel Cylinder .....	326
<b>Drum Lever, Parking Brake</b> .....	321
Dual Battery Control System .....	546
Dual Exhaust Hanger Set .....	484
Dual Fan Wire Harness .....	357
Dual Feed Fuel Line .....	468
Duct, Heater .....	373
Dust Boot, Tie Rod .....	278
Dust Shield, Bellhousing .....	516
<b>Dust Shield, Shifter</b> .....	525

## E

Eccentric Eliminator Set .....	282
Eccentric Loc-Out Set .....	282
EFI Air Cleaner Base .....	475
<b>EFI Conversion Set</b> .....	475
EFI Harness .....	539
<b>Electric Cooling Fan</b> .....	356-359
Electric Exhaust Cutout .....	492
Electric Fan Bracket .....	360
<b>Electric Fan Controller</b> .....	362
<b>Electric Fan Mounting Set</b> .....	360
<b>Electric Fan Relay</b> .....	361
<b>Electric Fan Thermo Switch</b> .....	361
Electric Fan Wiring Harness with Relay .....	361
Electric Fuel Pump .....	462
<b>Electric Kickdown Conversion</b> .....	507
Electric Trunk Release .....	543
Electric Vacuum Pump .....	312
Electric Water Pump .....	366
Electric Water Pump Relay .....	366
Electrical Connector Separator .....	546
Electrical Manual .....	145
Electronic Speed Sensor Lead .....	500
Eliminator Rust Remover .....	264
Emblem Adhesive .....	161
<b>Emblem Attachment Tape</b> .....	161
Emblem Barrel Nut .....	161
Emblem Speed Nut .....	161
Emblem Template .....	161
Emblem, Air Cleaner .....	162, 438
Emblem, Console .....	125
Emblem, Dash Panel .....	67
Emblem, Door Panel .....	47
Emblem, Fender .....	157-159
Emblem, Glove Box .....	99
Emblem, Grill .....	156
<b>Emblem, Hood</b> .....	156, 159
Emblem, Horn Cap .....	110
<b>Emblem, Hubcap</b> .....	334
Emblem, Hurst Equipped .....	524
Emblem, Quarter Panel .....	160
Emblem, Rear Panel .....	160-161
<b>Emblem, Seat Belt</b> .....	36
<b>Emblem, Sill Plate</b> .....	9
Emblem, Trunk Lid .....	160-161

Emblem, Wheel Cap .....	334
Emblem, Wheel Spinner .....	335
Emblem/Trim Adhesive .....	192
Emblems, Seat Upholstery .....	28
Emissions System Decal .....	165
End Cap, Seat Molding .....	30
<b>End Cap, Trunk Floor Drop Off</b> .....	261
End Cap, Windlace .....	179
<b>End Link, Sway Bar</b> .....	284-285
Engine Bolt Set .....	388-389
Engine Dress-Up Sets .....	418
Engine Frame Bracket .....	387
Engine Frame Mount .....	387
Engine Gasket Maker .....	406
<b>Engine Gasket Sets</b> .....	406
Engine Gaskets .....	406
<b>Engine Manuals</b> .....	142-143
Engine Mount Plates, LS1/LS6/Vortec .....	387
Engine Mount, LS .....	387
Engine Oil .....	399
<b>Engine Oil Cooler</b> .....	396-397
Engine Pull Bracket .....	384
Engine Refinishing Paint .....	384
Engine Rotation Adapter Tool .....	384
Engine Tools .....	384
<b>Engine Valve Stem Seal</b> .....	407
Engine Wire Harness .....	535
Engine Wiring Harness .....	539
Engine, Crate .....	385
Epoxy Putty .....	265
Epoxy, Metal Weld .....	193, 454, 493
<b>Epoxy, Quick Set</b> .....	161
<b>Escutcheon, Shoulder Belt</b> .....	37
Evaporator Box Seal .....	382
Evaporator Case Drain Hose .....	382
<b>Evaporator Kit</b> .....	382
Exhaust Balance Pipe .....	483
<b>Exhaust Clamp</b> .....	484-485
Exhaust Cutout Controller .....	492
Exhaust Cutout Pipe .....	492
Exhaust Flange .....	484
Exhaust Hanger .....	484
Exhaust Headers .....	476-477
Exhaust Installation Set .....	484
<b>Exhaust Manifold</b> .....	479
Exhaust Manifold Bolt Lock Set .....	481
<b>Exhaust Manifold Bolt Set</b> .....	481
Exhaust Manifold Bolts .....	481
Exhaust Manifold Down Pipe .....	483
Exhaust Manifold Front Pipes .....	483
<b>Exhaust Manifold Heat Riser</b> .....	480
<b>Exhaust Manifold Heat Shield</b> .....	484
Exhaust Manifold Heat Stove .....	480
Exhaust Manifold Stud Set .....	481
Exhaust Manifold to Head Pipe Tube Ext .....	480
Exhaust Paint .....	154
<b>Exhaust Pipe Head Shield</b> .....	484
Exhaust Pipe Packing Gasket .....	484
Exhaust Repair Kit .....	484
Exhaust System .....	490-491
<b>Exhaust Tip</b> .....	493
Exhaust Turndown .....	492
Exhaust Wrap .....	494
Exhaust X-Pipe .....	483
Exhaust Y-Pipe .....	483
Expansion Valve, AC .....	383
Extended Wheel Well Opening .....	255
<b>Extender, Bucket Seat</b> .....	29
Extension Harness, Transistor Ignition Amplifier .....	433
Extension Molding, Park Lamp Bezel .....	188
Extension Rod, Brake Pedal .....	130
Extension, Floor Pan to Firewall .....	238
Extension, Horn Wire .....	111
Extension, Sill Plate .....	9
Exterior Molding .....	188-189, 191-192
Exterior Screw Set .....	218
Eyebrow Molding .....	188

## F

Fact & Feature Manual .....	141
Factory Service Manual .....	140
Factory Shop Manual CD .....	140
False Alarm .....	146
Fan Belt .....	363
<b>Fan Blade, Alternator</b> .....	449
Fan Bracket, Electric .....	360
Fan Clutch .....	355
Fan Clutch to Water Pump Stud .....	355
Fan Mounting Gasket .....	360
Fan Mounting Rod .....	360

<b>Fan Pigtail Connector</b> .....	361
Fan Shroud .....	357
Fan Shroud Decal .....	164
Fan Shroud Fastener .....	350
Fan Shroud, Radiator .....	350
<b>Fan Spacer</b> .....	355
Fan Spacer Bolt Set .....	355
Fan Switch .....	357
Fan Switch, Heater/AC Blower .....	374
Fan Temperature Sending Unit .....	360
Fan Temperature Sensor .....	360
Fan Temperature Switch .....	362
Fan Thermostat, Electric .....	361-362
Fan to Fan Clutch Bolt Set .....	355
<b>Fan Wiring Harness, Electric</b> .....	360
Fan, Blower Motor .....	374
<b>Fan, Radiator</b> .....	354
Fastener, Door Weatherstrip .....	179
Fastener, Fan Shroud .....	350
<b>Fasteners, Bench Seat Side Cover</b> .....	30
Fasteners, Front End .....	218
Fasteners, LED Accessory .....	138
Fasteners, License Plate .....	138
Fasteners, Underhood And Trunk .....	219
<b>Fasteners/Clips/Bolts</b> .....	266-267
Feed Wire, Power Tailgate Window .....	537
<b>Feeler Gauges</b> .....	429
Felt Washer, Battery Post .....	531
Fender .....	229
Fender Apron .....	229
<b>Fender Bolt Set</b> .....	230
Fender Brace .....	230
Fender Cover .....	146
Fender Emblem .....	158
Fender Eyebrow Molding .....	188
<b>Fender Flares</b> .....	230
Fender Ornament .....	230
Fender Panel, Inner .....	229
Fender Patch Panel .....	229
Fender Skirt Bolt .....	230
Fender Skirt Brace .....	229
Fender Skirt Mounting Bolt .....	230
<b>Fender Splash Shield Clips</b> .....	181
Fender to Cowl Bolts .....	218, 231
<b>Fender Washer, Cupped</b> .....	230
Fender Well Splash Apron Set .....	181
Fender Well, Inner .....	229
Ferrule, Door Lock Knob .....	51
Fiber Optic Ashtray Socket .....	101
Fiber Optic Lamp Housing Bezel .....	205
Filler Detectable .....	264
Filler Panel Bumper, Rear Seat .....	29
Filler Panel, Bumper .....	220
Filler Panel, Radiator .....	347
Filler Panel, Trunk Floor to Quarter .....	261
Filler Tube, Oil .....	395
Filler, Rear Cross Rail .....	255
Filter Adapter, Deep Pan .....	502
Filter Connector, Oil .....	393
Filter Magnet, Transmission .....	502
Filter, Air .....	440
<b>Filter, Air Cleaner</b> .....	441
Filter, Automatic Transmission .....	502
<b>Filter, Coolant</b> .....	351
<b>Filter, Fuel</b> .....	459
Filter, Ignition Noise .....	425
Filter, Oil .....	399
<b>Filter, Power Steering Fluid</b> .....	270
Filter, Tachometer Noise .....	81
<b>Fire Extinguisher</b> .....	147
Firewall Boot Seal .....	548
Firewall Carpet Guard .....	9
<b>Firewall Heat Shield</b> .....	12
Firewall Insulation .....	9, 11
Firewall Pad Retainer Clip .....	9
Firewall Panel .....	219
Firewall Plug, Master Cylinder .....	315
Firewall Relay Cover .....	544
Firewall Wire Port .....	548
Fitting, AC POA Valve .....	383
Fitting, Brake Line .....	319
<b>Fitting, Fuel Return Line</b> .....	461
Fitting, Heater Hose .....	367
<b>Fitting, O-Ring to Invert Flare</b> .....	275
<b>Fitting, Oil Line</b> .....	123
<b>Fitting, Oil Line Block</b> .....	123
Fitting, Oxygen Sensor .....	482
Fitting, Water Pump Bypass Hose Outlet .....	367
Fitting, Water Pump Hose Outlet .....	367
<b>Fittings Transmission, Compression</b> .....	506
<b>Fittings, Compressor Block</b> .....	380



Fittings, Intake Manifold.....	412
Fittings, Zerk.....	279
Flame Arrestor, Air Cleaner.....	438
Flange, Exhaust.....	484
Flange, Header Collector Ball.....	478
Flasher, Hazard Lamp.....	97
Flasher, LED.....	214
Flasher, Turn Signal.....	106
Flashers.....	97
Flexi-Rod, Shift Actuator.....	512
Flexlines, Stainless Steel Brake.....	319
Flexplate.....	499
Flexplate To Crankshaft Bolt.....	499
Float Adjustment Tool.....	469
Floor Brace.....	238
Floor Cover, Vinyl.....	7
Floor Heat Shield.....	495
Floor Insulation.....	495
<b>Floor Mats</b> .....	15-19
Floor Mount, Steering Column.....	104
<b>Floor Pan</b> .....	236-237
Floor Pan & Trunk Restoration Set.....	236
Floor Pan Plug.....	237, 261
Floor Pan Plug, Trunk.....	261
Floor Pan Repair Set.....	265
Floor Pan to Firewall Extension.....	238
<b>Flywheel Cover Hardware</b> .....	517
<b>Flywheel Mounting Hardware</b> .....	517
Flywheel Ring Gear.....	517
Flywheel to Crankshaft Bolt.....	516
<b>Flywheel/Clutch Housing Cover</b> .....	517
Foam, Seat.....	28
<b>Fog Lights</b> .....	213
Folding Seat Bumper.....	183
Footrest, Adjustable.....	131
Fork, Clutch.....	520
Fork, Clutch Release.....	520
Formula Five Prelube Grease.....	286
Forward Console Plate Hardware Set.....	125
Frame Bracket, Idler Arm.....	277
Frame Front, Subframe.....	294
Frame Rail.....	255
Frame Rail Brace.....	255
Frame, Door Glass.....	185
Frame, License Plate.....	133, 138-139
Frame, Seat.....	28
Frame, Vent Window.....	185
Freeze Plugs.....	389
Front Brake Set.....	310
Front Bumper.....	220
<b>Front Coilover</b> .....	297
Front Disc Caliper Inlet Line.....	318
Front End.....	231
Front End Rebuild Set.....	277
Front Frame Rail Support.....	238
Front Frame Subframe.....	294
Front Lamp Wiring Harness.....	534
<b>Front Spoiler</b> .....	220
Front Sump Oil Pan, V8 Conversion.....	390
<b>Front Toe Board</b> .....	237
Front Wheel Bearing Grease Cap.....	328
Fuel Additive.....	455
Fuel Bypass Regulator.....	463
Fuel Cap.....	455
Fuel Door.....	222
<b>Fuel Filler Assembly</b> .....	455
Fuel Filler Door Stopper.....	183
<b>Fuel Filler Neck</b> .....	454
Fuel Filler Neck to Body Gasket.....	454
<b>Fuel Filter</b> .....	459
Fuel Filter Bracket.....	459
Fuel Filter Mount.....	459
Fuel Filter Spring.....	459
Fuel Gauge.....	68
Fuel Hose.....	461
Fuel Hose Clamp.....	461
<b>Fuel Hose End</b> .....	461
Fuel Hose Stamp.....	454
Fuel Injection Engine Swap Wiring Harness.....	539
<b>Fuel Injection System</b> .....	474
Fuel Inlet Nut.....	468
<b>Fuel Line Armor Shielding</b> .....	461
<b>Fuel Line Clips</b> .....	319, 460-461
Fuel Line Disconnect Set.....	461
Fuel Line Y-Block.....	460
Fuel Line, Dual Feed.....	468
Fuel Line, Pump to Carburetor.....	458
Fuel Pressure Gauge.....	459
Fuel Pressure Regulator.....	463
Fuel Pressure Tester.....	459
Fuel Pump.....	456-457, 462

<b>Fuel Pump Block Off Plate</b> .....	457
<b>Fuel Pump Bolts</b> .....	458
<b>Fuel Pump Mounting Plate Gasket</b> .....	457
Fuel Pump Push Rod.....	457
<b>Fuel Pump Relay</b> .....	463, 547
Fuel Pump Safety Switch.....	463
Fuel Recommendation Decal.....	172
<b>Fuel Return Line Fitting</b> .....	461
Fuel Sending Unit.....	71
Fuel Sending Unit Float.....	456
Fuel Sending Unit Screen.....	456
<b>Fuel Signal Adapter</b> .....	82
<b>Fuel Tank</b> .....	452-453
Fuel Tank Anti-Squeak Insert.....	453
<b>Fuel Tank Filler Hose</b> .....	454
Fuel Tank Mounting Strap.....	453
Fuel Tank Sealer.....	453
Fuel Tank Sender.....	71
Fuel Tank Sender Wire Harness.....	456, 535
Fuel Tank Sending Unit Gasket.....	456
Fuel Tank Sending Unit Lock Ring.....	456
Fuel Tank Sending Unit Lock Ring Tool.....	456
Fuel Tank Strap Bolts.....	453
Fuel Tank, Mini-Tub.....	295
Fuel Vapor Charcoal Canister.....	459
Fuel Vapor Line.....	460
Fuel, Unleaded Decal.....	173
Funnel.....	399
<b>Fuse Block</b> .....	545
<b>Fuse Block Add-On</b> .....	545
Fuse Block Screws.....	545
<b>Fuse Block, Auxiliary</b> .....	545
Fuse Circuits Add-On.....	545
Fuse Panel System Wire Harness.....	541
Fuse Tap/Fuse Holder.....	546
Fuses.....	545
Fuzzy Dice.....	138

**G**

Garage Utility Mat.....	147
Gas Cap.....	455
Gas Line Support Bracket.....	460
Gas Pedal.....	126
Gas Pedal Mounting Pin.....	126
Gas Pedal Pad.....	126
Gas Pedal Rod.....	126
Gas Pedal Rod Support.....	127
Gas Pedal Spring.....	126
<b>Gas Pedal</b> .....	452-453
<b>Gas Tank Drain Plug</b> .....	454
Gas Tank Vent Valve.....	454
Gasket Lamp, Side Marker.....	208
Gasket Set, Paint Seal.....	181
Gasket Set, Rebuild Manual Trans.....	515
<b>Gasket Sets, Engine</b> .....	406
Gasket, Air Cleaner Base.....	466
Gasket, Air Cleaner To Carburetor.....	466
Gasket, Antenna.....	94
Gasket, Brake Backing Plate.....	325
Gasket, Carburetor.....	466
Gasket, Carburetor Base.....	466
Gasket, Differential Cover.....	307
Gasket, Distributor.....	426
Gasket, Door Lock Cylinder.....	249
Gasket, Engine Overhaul.....	406
Gasket, Exhaust Pipe Packing.....	484
Gasket, Fan Mounting.....	360
Gasket, Fuel Filler Neck to Body.....	454
<b>Gasket, Fuel Pump Mounting Plate</b> .....	457
Gasket, Fuel Tank Sending Unit.....	456
Gasket, Header.....	478
<b>Gasket, Intake Manifold</b> .....	412-413
Gasket, License Lamp.....	213
<b>Gasket, Oil Pan</b> .....	393
Gasket, Oil Pan Drain Plug.....	393
Gasket, Outer Door Mirror.....	251
Gasket, Park Lens.....	206
Gasket, Side Marker Bezel.....	208
Gasket, Side Marker Lens.....	208
Gasket, Taillamp.....	210
Gasket, Taillamp Body.....	210
Gasket, Taillamp/Back-Up Lens.....	210
<b>Gasket, Thermostat</b> .....	371
Gasket, Transmission Pan.....	502
Gasket, Trunk Lock Cylinder.....	257
Gasket, Water Pump.....	366
Gaskets, Door Handle.....	247
<b>Gaskets, Head</b> .....	406
Gaskets, Hood Louver.....	225
<b>Gaskets, Timing Cover</b> .....	402

<b>Gaskets, Valve Covers</b> .....	422
Gauge Base, Console.....	122
<b>Gauge Bulb and Socket</b> .....	81
Gauge Bulb, Console.....	123
Gauge Conversion Set.....	74
Gauge Hardware, Console.....	123
Gauge Harness.....	82
Gauge Lamp Bulbs.....	83
Gauge Lens, Console.....	122
Gauge Lens, Dash.....	67
Gauge Mount Angle Ring.....	83
Gauge Mount Panel.....	83
Gauge Mount Pedestal.....	83
Gauge Oil Line, Console.....	123
Gauge Panel.....	72-73
Gauge Panel, Mount.....	83
Gauge Panel, Under Dash.....	83
Gauge Pod, Console.....	122
Gauge Resistor.....	82
<b>Gauge, Compass</b> .....	81
Gauge, Fuel.....	68
Gauge, Fuel Pressure.....	459
<b>Gauge, Fuel Signal Adapter</b> .....	82
Gauge, Instrument Cluster.....	68
Gauge, Speedometer.....	68
<b>Gauge, Tachometer</b> .....	69, 81
<b>Gauges</b> .....	68-69, 74-79
Gauges, Console.....	122-123
<b>Gauges, Dash</b> .....	68-69, 75
Gauges, Tachometer.....	80
Gear Indicator Sending Unit.....	82
Gear Oil, Synthetic.....	307, 518
<b>Gear, Distributor</b> .....	426
Gear, Speedometer Driven.....	71
<b>Gear, Timing</b> .....	401
<b>Gearbox, Power Steering</b> .....	274
Gearshift Fork, Transmission.....	515
Generator.....	448
Generator Warning Tag.....	166
Glass.....	184-185
<b>Glass Channel, Wagon Tailgate</b> .....	186
Glass Frame, Quarter.....	185
Glass Holder Tool.....	185
Glass Installation Tape.....	177
Glass Kit.....	184
Glass Molding Clip Installation Tool.....	193
Glass Run Channel, Door.....	177
Glass Seal Rope Tool.....	193
Glass Setting Tape.....	185
Glass Support, Windshield.....	185
Glass, Door.....	184
Glass, Door Assembly.....	184
Glass, Outer Door Mirror.....	251
Glass, Quarter.....	185
Glass, Rear Window.....	185
Glass, Vent.....	184
Glass, Windshield.....	184
Glasses, Drinking.....	133
Glove Box.....	99
Glove Box Clips.....	99
Glove Box Door.....	99
Glove Box Door Arm Bumper.....	99
Glove Box Door Bumper.....	120, 183
Glove Box Emblem.....	99
Glove Box Lamp Harness.....	537
<b>Glove Box Lamp Wiring Harness</b> .....	99
Glove Box Latch Striker.....	99
Glove Box Lock Cylinder Set.....	99
<b>Glove Box Lock Nut Tool</b> .....	99
Glove Box Lock Retainer.....	99
Glove Box Locks.....	99
Glove Box Rubber Stopper.....	99
Glove Box Screw.....	99
<b>GPS Speed Sender</b> .....	71
Grease Cap, Wheel Bearing.....	328
Grease, Formula Five Pre-Lube.....	286
Grease, High Temp Wheel Bearing.....	328
Grill.....	216-217
Grill Anchor Nut.....	217
<b>Grill Brackets</b> .....	217
Grill Emblem.....	156
Grill Guard.....	217
Grill Molding.....	188
Grill Nut.....	217
Grill Reinforcement.....	217
Grill Support Brackets.....	217
Grill, Kick Panel Speaker.....	92
<b>Grill, Rear Speaker</b> .....	92
Grommet and Sleeve, Accelerator Rod.....	127
Grommet, AC Hose.....	378
<b>Grommet, Console Gauge Oil Line</b> .....	123

Grommet, Convertible Top Motor .....	242
Grommet, Core Support (Electrical).....	549
Grommet, Distributor Wire .....	426
Grommet, Heater Core .....	372
Grommet, Parking Brake Release Rod .....	322
Grommet, Speedometer Cable .....	70
<b>Grommet, Valve Cover .....</b>	<b>419</b>
<b>Grommet, Wiper Motor .....</b>	<b>235</b>
<b>Grommet, Wiring .....</b>	<b>549</b>
Ground Plate, Antenna .....	94
Ground Strap Set .....	534
Ground Strap, Antenna .....	94
<b>Ground Strap, Wiper Motor .....</b>	<b>235</b>
Ground Wire, AC Compressor .....	378
Ground Wire, Instrument Cluster .....	67
Ground Wire, Voltage Regulator .....	450
GT-Sport Front Clip .....	286
Guard, Bumper .....	221
Guard, Grill .....	217
Guide Plate, Brake Shoe .....	326
Guide, Brake Cable .....	322
Guide, Front Window .....	187
Guide, Shoulder Belt .....	37
Guides, Trunk Lid .....	256

**H**

Handle Cup, Door .....	52
Handle Mechanism, Inner Door .....	52
Handle Washer Plate, Window .....	53
Handle, Door Pull .....	49
<b>Handle, Inner Door .....</b>	<b>52-53</b>
Handle, Outer Door .....	247
Handle, Park Brake Release .....	322
<b>Handle, Shifter .....</b>	<b>513</b>
Handle, Vent Window .....	53
<b>Handle, Window Crank .....</b>	<b>53</b>
Hanger Hook, Coat .....	60
Hanger, Exhaust .....	484
Hanger, Tailpipe .....	484
Hardware Set, Brake .....	326
<b>Hardware, A-Arm Bushing .....</b>	<b>282</b>
<b>Hardware, A-Arm Mounting .....</b>	<b>281</b>
Hardware, AC Box Cover .....	382
<b>Hardware, Bellhousing to Block .....</b>	<b>516</b>
Hardware, Body Mount .....	287
Hardware, Body Mounting Plates .....	287
Hardware, Console Gauge .....	123
<b>Hardware, Flywheel Cover .....</b>	<b>517</b>
<b>Hardware, Flywheel Mounting .....</b>	<b>517</b>
<b>Hardware, Headlamp Assembly .....</b>	<b>201</b>
<b>Hardware, Headlamp Bezel .....</b>	<b>203</b>
Hardware, Heater Delete Plate .....	373
Hardware, Lower Control Arm .....	281
<b>Hardware, Oil Filter Bypass Valve .....</b>	<b>393</b>
Hardware, Quarter Glass Window .....	187
<b>Hardware, Seat Belt .....</b>	<b>39</b>
Hardware, Shock Absorber Mounting .....	298
<b>Hardware, Shock Mounting .....</b>	<b>299</b>
<b>Hardware, Steering Box Mounting .....</b>	<b>275</b>
Hardware, Steering Coupler .....	273
<b>Hardware, Torque Converter .....</b>	<b>499</b>
<b>Hardware, Transmission Crossmember .....</b>	<b>498</b>
<b>Hardware, Transmission Mount .....</b>	<b>497</b>
Harmonic Balancer .....	405
<b>Harmonic Balancer Cover .....</b>	<b>405</b>
<b>Harmonic Balancer Tool .....</b>	<b>405</b>
Harmonic Damper .....	405
Harness Pads, Seat Belt .....	35
Harness Wire, Engine .....	535
<b>Harness Wiring, Electric Fan .....</b>	<b>360</b>
Harness, AC .....	538
Harness, Chassis Trunk Mount .....	539
Harness, Console Gauge .....	123
Harness, Courtesy Lamp .....	537
Harness, Gauge .....	82
Harness, Glove Box Lamp .....	537
Harness, Heater .....	538
Harness, Ignition Amplifier Extension .....	433
Harness, Speed Warning .....	535
<b>Harness, T-56 Magnum .....</b>	<b>538</b>
Harness, Tachometer .....	535
Harness, Wire Complete .....	539
Hat/Cap .....	135
<b>Hatchback Lift Support .....</b>	<b>257</b>
Hatchback Weatherstrip .....	180
Hazard Lamp Flasher .....	97
Hazard Switch Knob .....	97
Head Bolt, Front End .....	218
Head Bolts .....	389
<b>Head Gaskets .....</b>	<b>406</b>

Header Bolt .....	478
Header Collector Ball Flange .....	478
Header Collector Reducer .....	476
<b>Header Flange Reducers .....</b>	<b>478</b>
Header Gasket .....	478
<b>Header Heat Shield .....</b>	<b>495</b>
Header Wrap .....	494-495
Header, Exhaust .....	476-477
<b>Headlamp .....</b>	<b>196-199</b>
Headlamp Adjuster .....	201
Headlamp Adjusting Spring .....	201
<b>Headlamp Assembly Hardware .....</b>	<b>201</b>
Headlamp Bezel .....	202
Headlamp Bezel Anchor Nut .....	203
<b>Headlamp Bezel Hardware .....</b>	<b>203</b>
Headlamp Bezel Seal .....	203
Headlamp Bucket Housing .....	203
Headlamp Bucket Shield .....	203
<b>Headlamp Bucket Tension Spring .....</b>	<b>203</b>
<b>Headlamp Cover .....</b>	<b>201</b>
<b>Headlamp Dimmer Switch .....</b>	<b>95, 104</b>
Headlamp Dimmer Switch Bezel .....	95
Headlamp Dimmer Switch Pigtail .....	95
Headlamp Filler Panel .....	203
Headlamp Molding .....	188
<b>Headlamp Mounting Bucket .....</b>	<b>203</b>
<b>Headlamp Pigtail .....</b>	<b>200</b>
Headlamp Relay & Fuse .....	200
Headlamp Retaining Ring .....	201
Headlamp Retaining Ring Screw .....	201
Headlamp Shield .....	201
Headlamp Socket & Wiring .....	200
<b>Headlamp Spacers .....</b>	<b>201</b>
Headlamp Switch .....	95
Headlamp Switch Knob .....	95
Headlamp Switch Nut .....	95
Headlamp Switch Nut Tool .....	95
Headlamp Washer Nozzle .....	201
Headlamp Washer Nozzle Nut .....	201
<b>Headlamp Wiring Harness .....</b>	<b>200</b>
Headlight Instruction Tag .....	169
<b>Headlight Plug .....</b>	<b>200</b>
Headliner .....	54-58
Headliner Bow .....	58
Headliner Bow Clip .....	59
<b>Headliner Insulation .....</b>	<b>12</b>
Headliner Molding .....	59
Headliner Retainer .....	58
Headliner Side Molding Clips .....	59
Headliner Tool .....	59
Headliner Trim .....	59
Headrest .....	31
Headrest Bracket, Bucket Seat .....	31
Headrest Cover .....	31
Headrest Lock, Bucket Seat .....	31
Heat Blower Motor Fan .....	374
<b>Heat Riser Tube .....</b>	<b>480</b>
Heat Riser Valve, Exhaust .....	480
<b>Heat Riser, Exhaust Manifold .....</b>	<b>480</b>
Heat Shield, Air Intake .....	441
Heat Shield, Back-Up Switch .....	96
<b>Heat Shield, Battery .....</b>	<b>529, 533</b>
Heat Shield, Carburetor .....	468
<b>Heat Shield, Catalytic Converter .....</b>	<b>485</b>
Heat Shield, Exhaust Manifold .....	484
Heat Shield, Exhaust Pipe .....	484
Heat Shield, Firewall .....	12
Heat Shield, Floor .....	495
<b>Heat Shield, Muffler .....</b>	<b>485, 487-488</b>
<b>Heat Shield, Oil Filter .....</b>	<b>398</b>
Heat Shield, Spark Plug Wire .....	436
<b>Heat Shield, Starter .....</b>	<b>446</b>
Heat Shield, Turbo .....	495
Heat Sleeves .....	494
Heat Stove Mounting Stud .....	480
Heat Stove, Exhaust Manifold .....	480
<b>Heat/AC Blower Motor .....</b>	<b>374</b>
<b>Heater Box Control Cable Clip .....</b>	<b>373</b>
Heater Box Cover Mounting Set .....	373
<b>Heater Box Resistor Screw .....</b>	<b>373-374</b>
Heater Box Seal .....	373
Heater Box Wire Retainer .....	373
Heater Box, Custom .....	373
Heater Box/Case .....	373
Heater Control .....	375
Heater Control Cable .....	375
Heater Control Knob .....	375
Heater Control Lens Backing Plate .....	376
Heater Control Lens Clip .....	375
Heater Control Lever .....	375
<b>Heater Control Valve .....</b>	<b>372</b>

Heater Control Valve Mounting Rivet .....	372
Heater Core .....	372
Heater Core Grommet .....	372
Heater Core Mounting Clip .....	372
Heater Core Mounting Strap .....	372
<b>Heater Core Seal .....</b>	<b>372</b>
Heater Core Tube Retainer .....	372
<b>Heater Delete Plate .....</b>	<b>373</b>
Heater Delete Plate Hardware .....	373
Heater Diverter Valve Connector .....	375
Heater Duct .....	373
Heater Fan Switch .....	374
Heater Harness .....	538
Heater Hose .....	352
Heater Hose Clamp, Alternator .....	449
Heater Hose Clip .....	351
Heater Hose Fitting .....	367
Heater Motor to Firewall Seal .....	375
<b>Heater, Seat .....</b>	<b>29</b>
Heater/AC Control Lens .....	376
<b>Heating Element, Cigarette Lighter .....</b>	<b>100</b>
HEI Battery/Tach Pigtail .....	427
<b>HEI Distributor Pigtail .....</b>	<b>427</b>
HEI Ignition Coil .....	431
HEI Wire Harness .....	427
Hex Nut, Self-Locking .....	195
Hi Temp Coating .....	494
Hidden Wipers .....	234
Hinge, Door .....	244
<b>Hinge, Hood .....</b>	<b>226</b>
<b>Hinge, Trunk Lid .....</b>	<b>256</b>
Hold Down, Valve Cover .....	422
Hood .....	223
<b>Hood Adjuster Bumper .....</b>	<b>182</b>
Hood Bumper .....	182
Hood Decal, Rally Nova .....	173
<b>Hood Emblem .....</b>	<b>156, 159</b>
<b>Hood Hinge .....</b>	<b>226</b>
<b>Hood Hinge Bolts .....</b>	<b>226-227</b>
Hood Hinge Spring .....	226
<b>Hood Insulation .....</b>	<b>224</b>
<b>Hood Insulation Retainers .....</b>	<b>224</b>
Hood Insulator and Cover Set .....	224
<b>Hood Lamp .....</b>	<b>227</b>
Hood Lamp to Hood Bumper .....	182
Hood Lamp Wire Harness .....	258
Hood Latch .....	227
Hood Latch Catch Support .....	227
Hood Latch Pilot Bolt .....	227
Hood Latch Pin .....	228
Hood Louver .....	225
Hood Louver Bracket .....	225
Hood Louver Gaskets .....	225
Hood Louvers .....	225
Hood Molding .....	188
<b>Hood Pin .....</b>	<b>228</b>
Hood Pin, Locking .....	228
Hood Prop .....	228
<b>Hood Release Cable .....</b>	<b>228</b>
<b>Hood Scoop .....</b>	<b>225, 444</b>
Hood to Cowl Seal .....	181
Hook, Coat Hanger .....	60
Hook, Rear Seat Floor .....	239
Horn .....	111
Horn Button .....	108, 115-117
Horn Button Cap Retainer .....	110
Horn Button Contact Plate .....	107
Horn Button Contact, Steering Wheel .....	107
Horn Button Spring .....	107
Horn Button, Steering Wheel .....	107, 110
Horn Cap .....	110
Horn Cap Emblem .....	110
Horn Cap Mounting Ring .....	107
Horn Cap Mounting Set .....	107
Horn Contact Cam .....	111
Horn Contact Pin Set .....	107
<b>Horn Kit, Retrofit .....</b>	<b>111</b>
Horn Mounting Bolt .....	111
Horn Relay .....	111
Horn Relay Pigtail .....	111
Horn Wire Extension .....	111
<b>Hose Adapter, Coolant .....</b>	<b>351</b>
<b>Hose Adapter, Radiator .....</b>	<b>353</b>
<b>Hose Clamp Ends .....</b>	<b>353</b>
Hose Clamp Pliers .....	351
Hose Clamp, Heat Shrink .....	353
Hose Clamps .....	353
Hose Clip, PCV .....	419
Hose Crimper Tool, Air Conditioning .....	378
Hose Fitting, Power Steering .....	272
Hose Insulation .....	495



Hose Kit without Dryer.....	383
Hose Marking Ink.....	454
Hose Stamps.....	454
Hose Tie Straps, Washer.....	234
Hose, Air Cleaner.....	439
Hose, AIR Injection/Smog Hose.....	482
Hose, Brake.....	320
Hose, Fuel.....	461
Hose, Fuel Tank Filler.....	454
Hose, Heater.....	352
Hose, HVAC.....	375
Hose, PCV Valve.....	419
Hose, Power Steering.....	272, 276
Hose, Rack and Pinion Conversion Set.....	276
Hose, Radiator.....	352
Hose, Radiator Overflow.....	349
Hose, Steering Control Valve.....	272
Hose, Water Pump Bypass.....	365
Hose, Windshield Washer.....	234
Hoses, Rack and Pinion.....	276
Hoses, Reduced Barrier.....	378
Housing Cover, Flywheel/Clutch.....	517
Housing, Cigarette Lighter.....	100
Housing, Headlamp Bucket.....	203
Housing, Rear Axle.....	303
Housing, Taillamp.....	210
Hub, Steering Wheel.....	107
Hubcap.....	332, 334
Hubcap Clips.....	335
Hubcap Emblem.....	334
Hurst Equipped Emblem.....	524
Hurst Roll Control.....	312
HVAC/Compressor Relay.....	538
Hydraulic Clutch Set.....	519
Hydraulic Release Bearing.....	519
Hydraulic System Bleeder Set.....	242

**I**

Idle Stop Solenoid Control Wire.....	535
Idler Arm.....	277
Idler Arm Bearing.....	277
Idler Arm Frame Bracket.....	277
Ignition Amplifier Extension Harness.....	433
Ignition Amplifier Wire Harness.....	433
Ignition Amplifier, Transistor.....	433
Ignition Box.....	427
Ignition Coil.....	429-431
Ignition Coil Bracket.....	430
Ignition Coil Bracket Hardware.....	430
Ignition Coil Cover.....	418
Ignition Coil Resistor.....	431
Ignition Coil Wire.....	431
Ignition Coil, HEI.....	431
Ignition Condenser.....	429
Ignition Control Module.....	427, 429, 432
Ignition Distributor.....	424-425
Ignition Distributor Washer.....	426
Ignition Key Buzzer Switch.....	98
Ignition Lock.....	248
Ignition Manual.....	145
Ignition Module Insulating Mounts.....	427
Ignition Noise Filter.....	425
Ignition Points.....	429
Ignition Rotor.....	428-429
Ignition Starting Instruction Sleeve.....	170
Ignition Switch.....	98
Ignition Switch Actuator.....	98
Ignition Switch Bezel.....	97
Ignition Switch Bezel Nut.....	97
Ignition Switch Bezel Nut Tool.....	97
Ignition Wires.....	433-435
Ignition, Door, Glove Box & Trunk Lock Sets.....	248
Indicator Lamp.....	537
Indicator Overlay, Shift.....	105
Inner Rear View Mirror.....	62-63
Input Shaft Gear Roller.....	515
Insert, Dash.....	67
Inspection Sheet, Pre-Delivery.....	173
Inspection Stamp.....	454
Installation Set, Ring & Pinion.....	306
Installation Set, Upholstery.....	28
Installation Tape, Glass.....	177
Instructions, AM/FM Stereo.....	174
Instrument Cluster Bezel.....	67
Instrument Cluster Gauge.....	68
Instrument Cluster Ground Wire.....	67
Instrument Cluster Lamp Socket.....	67
Instrument Cluster LED Upgrade.....	67
Instrument Cluster Lens Plug.....	82
Instrument LED Lamp Bulb.....	67

Instrument Panel J-Clip.....	67
Instrument Panel Lamp Bulb.....	67
Insulation.....	10-11, 13-14
Insulation Damper Pad.....	11
Insulation Tape.....	13
Insulation, Anti-Rattle.....	548
Insulation, Battery.....	532
Insulation, Carpet.....	10
Insulation, Door Panel.....	12
Insulation, Firewall.....	9, 11
Insulation, Floor.....	495
Insulation, Headliner.....	12
Insulation, Hood.....	224
Insulation, Hose.....	495
Insulation, Muffler.....	488
Insulation, Oil Catch Can.....	398
Insulation, Seat Shelf.....	64-65
Insulation, Spray-On.....	151
Insulation, Spray-On Acoustic.....	14
Insulation, Temperature Sending Wire.....	360
Insulation, Wiring.....	495
Insulator, Carburetor.....	468
Intake Manifold.....	409-411
Intake Manifold Bolts.....	413
Intake Manifold Fittings.....	412
Intake Manifold Gasket.....	412-413
Intake Manifold Heat Plate.....	412
Intake Manifold Stud Bolt.....	450
Intake Manifold Washers.....	413
Interchange Manual.....	141
Interior Chrome Screw.....	8
Interior Door Panel.....	40-46
Interior Heat Reduction.....	12
Interior Manuals.....	145
Interior Paint.....	153
Interior Quarter Side Panel.....	45
Interior Screw Set.....	10
Interior Upholstery.....	20-27
Intermittent Wiper Module.....	234
Isolators, Radiator.....	347

**J**

J-Clip, Instrument Panel.....	67
J-Nut Fasteners.....	266
J-Strap Clips, Wiring Harness.....	549
Jack Storage Bag.....	260
Jack Wrench.....	260
Jack Wrench Storage Sleeve.....	260
Jack, Bumper.....	260
Jacket.....	134
Jacking Instruction Decal.....	168
Joint Strap and Bolt Set.....	303
Joint U-Bolt.....	303
Joint, Rag.....	103
Joint, Steering Coupling.....	273
Junction Block.....	549

**K**

Key Column Wiring Adapter.....	104
Key Cover.....	249
Key Replacements.....	249
Key Set, Ignition and Trunk.....	249
Keychain.....	138
Keyless Entry System.....	543
Kick Panel.....	8
Kick Panel Seal.....	8
Kick Panel Speaker.....	92
Kick Panel Speaker Baffles.....	89
Kick Panel Speaker Grill.....	92
Kick Panel Vacuum Actuator Cover.....	8
Kick Panel Vent Cable.....	8
Kick Panel Vent Cable Clip.....	8
Kickdown Cable.....	473
Kickdown Cable Bracket.....	473, 508
Kickdown Cable Sets, Transmission.....	507
Kickdown Rod Clip.....	508
Kickdown Rod Retainer Clip.....	127
Kickdown Rod, Transmission.....	508
Kickdown Switch.....	508
Kickdown Switch Mounting Bracket.....	508
Kickdown Wiring Harness.....	538
Knob Set, Dash.....	95
Knob, Manual Shift.....	526
Knob, Column Shifter.....	105
Knob, Door Lock.....	51
Knob, Hazard Switch.....	97
Knob, Headlamp Switch.....	95
Knob, Heater Control.....	375
Knob, Radio.....	86-87

Knob, Seat Adjuster.....	31
Knob, Shift.....	513
Knob, Turn Signal Lever.....	106
Knob, Vent Pull.....	375
Knob, Window Crank.....	52
Knob, Windshield Wiper Switch.....	98
Knuckle Hook, Convertible Top.....	243

**L**

Lamp Assembly, Park.....	204
Lamp Assembly, Trunk.....	258
Lamp Base, Dome.....	61
Lamp Bracket, Courtesy Lamp.....	61
Lamp Bulb, Dome.....	61
Lamp Bulb, LED.....	215
Lamp Bulbs.....	214-215
Lamp Flasher, LED.....	214
Lamp LED, Park.....	206
Lamp Lens, Dome.....	61
Lamp Pigtail.....	200
Lamp Screw, Dome.....	61
Lamp Socket, Instrument Cluster.....	67
Lamp Socket, Side Marker.....	208
Lamp Tail, LED Conversion Sets.....	212
Lamp Tail, LED Panels.....	211
Lamp, Dome.....	61
Lamp, Hood.....	227
Lamp, LED Auxiliary.....	211
Lamp, License.....	213
Lamp, Side Marker.....	207-208
Lamp, Tail.....	209
Latch, Convertible Top.....	243
Latch, Door.....	245
Latch, Hood.....	227
Latch, Trunk.....	257
Lead Cable, Antenna.....	94
Lead Wire, Starter Motor Power.....	535
Lead, Distributor.....	426
Lead, Electronic Speed Sensor.....	500
Lead, Oil Pressure Sending Unit.....	392
Leaf Spring.....	299
Leaf Spring Anchor Plate.....	300
Leaf Spring Bolt.....	301
Leaf Spring Bushing.....	301
Leaf Spring Conversion.....	299
Leaf Spring Decal.....	172
Leaf Spring Eye Bolt.....	301
Leaf Spring Eye Bushing.....	301
Leaf Spring Installation Set.....	300
Leaf Spring Nut.....	301
Leaf Spring Offset Shackles.....	294
Leaf Spring Pad.....	301
Leaf Spring Rebuild Clamp Set.....	301
Leaf Spring Shackle.....	300
Leaf Spring Shackle Bushing.....	301
Leaf Spring U-Bolt.....	300
LED Clearance/Marker Light.....	208
LED Lamp Bulb.....	215
LED Lamp Flasher.....	214
LED Scanner Bar.....	197
Lens Backing Plate, Heater Control.....	376
Lens Control, Heater/AC.....	376
Lens Gems.....	211
Lens Plug, Instrument Cluster.....	82
Lens Screws.....	206
Lens Shift, Console.....	124
Lens, Back-Up Lamp.....	209-210
Lens, Column Shift Gear Indicator.....	105
Lens, Dash Gauge.....	67
Lens, LED Taillamp.....	211
Lens, License Lamp.....	213
Lens, Park Lamp.....	205
Lens, Radio.....	86
Lens, Shift.....	105
Lens, Shift Indicator.....	105
Lens, Side Marker.....	207
Lens, Taillamp.....	209-210
Lever, Accelerator Throttle.....	127
Lever, Heater Control.....	375
Lever, Shift Detent.....	511
Lever, Steering Column.....	105
Lever, Tilt Wheel Release.....	105
Lever, Turn Signal.....	106, 527
Lever, Turn Signal with Cruise.....	105
License Lamp.....	213
License Lamp Gasket.....	213
License Lamp Lens.....	213
License Lamp Socket.....	213
License Plate.....	139
License Plate Bolt.....	138

License Plate Bracket.....	222
License Plate Bumper.....	183
License Plate Frame.....	133, 138-139
<b>License Plate Mounting Set</b> .....	138, 222
License Plate Transport.....	139
License Plate, Yenke.....	133
Lid, Air Cleaner.....	438
<b>Lift Support, Hatchback</b> .....	257
Lifter Valley Oil Baffle.....	412
<b>Lifters</b> .....	407
Light Arm, Back-Up.....	96
Light Bulb Covers.....	83
Light, LED Clearance/Marker Light.....	208
Light, Shift.....	82
<b>Lighter Retainer, Cigarette</b> .....	100
<b>Lighter, Cigarette</b> .....	100
Line Lock.....	312
Line, Front Disc Caliper Inlet.....	318
Liner, Window Channel.....	187
Link Arm, Wiper Motor.....	235
Linkage Rod, Shift.....	512
Linkage, Clutch.....	520
Linkage, Column Shift.....	511
Literature, Automotive.....	142-145
Location Template, Antenna.....	94
Lock and Cable Car Cover Set.....	5
Lock Cylinder Gasket, Trunk.....	257
Lock Plate Cover.....	104
Lock Ring, Fuel Tank Sending Unit.....	456
Lock Sets, Ignition, Door, Glove Box & Trunk.....	248
Lock, Axle Shaft.....	304
Lock, Bucket Seat Headrest.....	31
<b>Lock, Door</b> .....	248
Lock, Ignition.....	248
Lock, Trunk.....	248
Locking Differential.....	304
Lockout Set, Alignment.....	281
Lockout, Vacuum Advance.....	426
Locks, Glove Box.....	99
Locks, Wheel.....	332
<b>Lockstrip Insert Tool</b> .....	193
Lockup Kit, Torque Converter.....	500
Louver, Hood.....	225
Louvers, Hood.....	225
<b>Lower Control Arm</b> .....	281
Lower Control Arm Hardware.....	281
Lower Control Arm, Tubular.....	280
Lower Fan Shroud Clip.....	350
Lowering Spring.....	299
LS Conversion Set.....	385
LS Engine Cover.....	385
LS Motor Mount Adapter.....	387
<b>Lubricant, Anti-Seize</b> .....	219
Lubricant, Rear Axle.....	307
Lubricant, Stick.....	263
<b>Lug Nuts, Wheel</b> .....	331-333, 338-342
Luggage Rack Instruction Tag.....	167

**M**

<b>Magnet, Car Accessories</b> .....	137
Main Cap Bolt.....	392
<b>Manifold Gasket, Intake</b> .....	412-413
Manifold, AC.....	380, 383
<b>Manifold, Exhaust</b> .....	479
<b>Manifold, Intake</b> .....	409-411
Manual Choke Cable.....	471
Manual Choke Cable Mount Bracket.....	471
<b>Manual Shift Knob</b> .....	527
<b>Manual Shift Lever</b> .....	524
Manual Transmission.....	514-515
Manual Transmission Fluid.....	518-519
Manual Transmission Rebuild Gaskets.....	515
Manual Transmission Shifter.....	523
Manual Transmission TCS Relay.....	525
Manual Transmission TCS Switch.....	525
<b>Manual, Accessory Installation</b> .....	142
Manual, Fact & Feature.....	141
<b>Manual, Fuel Injection</b> .....	143
Manual, General Repair.....	141
<b>Manual, Overhaul</b> .....	142
Manual, Shop Service.....	140
<b>Manual, Transmission</b> .....	144
Manual, Wiring.....	145
<b>Manuals, Carburetor</b> .....	143
<b>Manuals, Engine</b> .....	142-143
<b>Manuals, Interior</b> .....	145
Manuals, Paint & Body.....	144
Marker, Frame and Engine.....	153
Mast, Antenna.....	93
<b>Master Cylinder Brake Lines</b> .....	313

<b>Master Cylinder Cap</b> .....	315
<b>Master Cylinder Cover</b> .....	314
Master Cylinder Cover Bail.....	314
Master Cylinder Diaphragm.....	315
Master Cylinder Firewall Plug.....	315
Master Cylinder Pushrod.....	315
<b>Master Cylinder Pushrod Kit</b> .....	315
<b>Master Cylinder, Brake</b> .....	313-314
<b>Master Cylinder/Booster, Brake</b> .....	311
Master/Slave Cylinder, Clutch.....	519
Mat Tape.....	14
Mat, Trunk.....	258
<b>Mats, Floor</b> .....	15-19
Medalist Body Decal.....	173
Medallion, Side Marker.....	208
Memory Circuit Retainer.....	533
Metal Line Clamp.....	319
Metal Signs.....	137
Metal Weld Epoxy.....	193, 454, 493
Mini Sub Frame Set.....	286
Mini-Tub Fuel Tank Set.....	295
Mini-Tub Rear Shock.....	295
Mini-Tub Set.....	295
<b>Mirror Bracket Boot</b> .....	63
Mirror Bracket, Outer Door.....	251
Mirror Bracket, Rear View.....	63
Mirror Gasket, Outer Door.....	251
Mirror Glass, Outer Door.....	251
Mirror Mount, Rear View.....	63
Mirror Mounting Bushing.....	62
Mirror to Bracket Screw.....	251
<b>Mirror, Inner Rear View</b> .....	62-63
Modulator Valve, Transmission.....	506
Module, Ignition Control.....	427, 429, 432
Module, Low Fuel Warning.....	123
Molded Carpet.....	6-7
<b>Molding Clip Retaining Nut</b> .....	195
Molding Clip, Body Side.....	189
Molding Clip, Door Edge.....	189
Molding Clip, Rear Window.....	194
Molding Clip, Windshield.....	194
Molding Clips.....	195
Molding End Cap, Seat.....	30
Molding Release Tool.....	193
Molding Screw, Rocker Panel.....	191
Molding Screw, Wheel Opening.....	192
Molding Tool, Windshield.....	193
Molding Trim, Seat.....	30
Molding, Armrest Base.....	49
Molding, Body Side.....	189
Molding, Bucket Seat.....	30
Molding, Dash Trim.....	66
Molding, Door Panel.....	47
Molding, Door Window Frame.....	190
Molding, Exterior.....	188-189, 191-192
Molding, Fender Eyebrow.....	188
Molding, Grill.....	188
Molding, Headlamp.....	188
Molding, Headliner.....	59
Molding, Hood.....	188
Molding, Park Lamp Bezel Extension.....	188
Molding, Quarter Window Trim.....	190
Molding, Rear Cove.....	192
Molding, Rear Panel.....	192
Molding, Rear Window.....	190
Molding, Rear Window Trim.....	59
Molding, Rocker Panel.....	191
Molding, Roof Drip.....	190
Molding, Trunk Lid.....	192
Molding, Vinyl Top.....	191
Molding, Vinyl Top Corner.....	191
Molding, Wheel Opening.....	192
Molding, Window.....	190
Molding, Windshield.....	59
Moldings, Inner Trim.....	60
Moldings, Windshield.....	190
Morse Cable Bracket.....	469
Motor Arm, Wiper.....	235
Motor Mount.....	294, 386-387
<b>Motor Mount Bolt Set</b> .....	388
Motor Mount Insert.....	386
Motor Mount Shims.....	387
Motor Oil.....	399
Motor, Convertible Top.....	242
<b>Motor, Power Window</b> .....	544
<b>Motor, Windshield Wiper</b> .....	235
Mount Set, Power Cylinder.....	275
Mount, Engine Frame.....	387
Mount, Engine/Motor.....	294
Mount, Motor.....	386-387
<b>Mount, Transmission</b> .....	497

Mounting Adapter, Bucket Seat.....	33-34
Mounting Bracket, Park Brake Cable.....	322
<b>Mounting Brackets, Radiator</b> .....	347
Mounting Hub Adapter.....	116-117
<b>Mounting Pads, Radiator</b> .....	347
Mounting Ring, Horn Cap.....	107
Mounting Rivets, Heater Control Valve.....	372
Mounting Screw, Rear View Mirror.....	62
Mounting Screw, Steering Wheel.....	107
Mounting Strap, Back-Up Switch.....	96, 521
<b>Mounting Set, Electric Fan</b> .....	360
<b>Mounting Set, Transmission Cooler</b> .....	505
Mounting Strap, Heater Core.....	372
Mounting, Outer Door Mirror.....	251
Mounts, Ignition Module.....	427
Muffler Assembly, AC.....	383
Muffler Clamp.....	485
<b>Muffler Heat Shield</b> .....	485, 487-488
Muffler Repair Kit.....	488
<b>Mufflers</b> .....	486-489
<b>Multi Plastic Hole Plug</b> .....	183
Muncie Shifter Arm.....	524

**N**

<b>Neck, Fuel Filler</b> .....	454
Neon Clock.....	138
Neutral Safety Switch.....	96
Neutral Safety Switch Actuator.....	96
Neutral Safety Switch Wire Harness.....	537
Neutral Safety/Back-Up Lamp Switch.....	96
New Car Window Sticker.....	174
Noise Filter, Tachometer.....	81
Noise Suppressor, Radio.....	87
Nova SS Decal.....	173
Nozzle, Headlamp Washer.....	201
Nozzle, Windshield Washer.....	234
Nut Barrel, Emblem.....	161
<b>Nut Lock, Rear Axle U-Bolt</b> .....	303
Nut Mounting, Subframe.....	287
Nut Speed, Emblem.....	161
<b>Nut Wing, Air Cleaner</b> .....	439
Nut Wing, Spare Tire Hold Down.....	260
Nut, Alternator Pulley.....	449
<b>Nut, Antenna</b> .....	94
<b>Nut, Brake Rotor/Drum</b> .....	323
<b>Nut, Disc Brake Conversion</b> .....	323
Nut, Fuel Inlet.....	468
Nut, Grill.....	217
Nut, Grill Anchor.....	217
Nut, Headlamp Bezel Anchor.....	203
Nut, Headlamp Switch.....	95
Nut, Headlamp Washer Nozzle.....	201
Nut, Leaf Spring.....	301
Nut, License Plate Installation.....	222
Nut, Pitman Arm.....	275
Nut, Pitman Shaft Lash Adjuster.....	275
Nut, Power Steering Pulley.....	271
Nut, Radio Shaft.....	87
Nut, Shifter.....	525
Nut, Steering.....	328
<b>Nut, Steering Tension</b> .....	103
<b>Nut, Voltage Regulator</b> .....	450
Nuts, Park Brake Adjustment.....	322
Nuts, Thread Cutting.....	195
Nuts, Valve Cover Hold Down.....	423
Nylon Retaining Clip.....	222

**O**

<b>O-Ring to Invert Flare Fitting</b> .....	275
O-Ring, Brake Caliper.....	324
O-Ring, Door Handle.....	247
<b>Oil Breather Cap</b> .....	420-421
Oil Bypass Eliminator.....	398
Oil Cap.....	421
<b>Oil Catch Can Insulation</b> .....	398
Oil Catch Tank.....	398
<b>Oil Cooler Bracket</b> .....	398
Oil Cooler Line, Transmission.....	504
<b>Oil Cooler, Engine</b> .....	396-397
<b>Oil Cooler, Transmission</b> .....	504-505
Oil Deflector, Valvetrain.....	407
Oil Dipstick.....	395
Oil Dipstick Tube.....	395
Oil Dipstick Tube Seal.....	394
Oil Filler Tube.....	395
Oil Filler Tube/Breather.....	395, 420
Oil Filter.....	399
<b>Oil Filter Bypass Valve Hardware</b> .....	393
Oil Filter Connector.....	393



Oil Filter Decal .....	166
<b>Oil Filter Heat Shield</b> .....	398
Oil Filter Magnets .....	398
Oil Filter Prefilter .....	398
Oil Filter Wrench .....	399
<b>Oil Filter, Remote</b> .....	398
<b>Oil Line Block Fitting</b> .....	123
Oil Line Clip .....	123
<b>Oil Line Fitting</b> .....	123
Oil Pan .....	390-391
Oil Pan Baffle .....	391
Oil Pan Battery Cable Clip .....	531
Oil Pan Bolts .....	391, 394
Oil Pan Dipstick .....	391
<b>Oil Pan Drain Plug</b> .....	393
Oil Pan Drain Plug Gasket .....	393
<b>Oil Pan Gasket</b> .....	393
Oil Pan Seals .....	393
Oil Pressure Sending Unit .....	392
Oil Pressure Sending Unit Lead .....	392
Oil Pressure Switch Socket .....	392
Oil Pump .....	391-392
Oil Pump Cover .....	392
Oil Pump Driveshaft .....	391
Oil Pump Intake Screen .....	392
Oil Pump Pickup .....	391
Oil Pump Primer Tool .....	384
Oil Return Screen .....	412
Oil Sender Elbow .....	392
Oil, Engine .....	399
Ornament, Rally Wheel Cap .....	330
Ornaments, Wheel .....	338
Outer Cowl Side Panel .....	231
Outer Door Handle Push Button .....	247
Outer Door Handle, Power .....	542-543
<b>Outer Door Handles</b> .....	247
<b>Outer Door Mirror</b> .....	250-251
Outer Mirror Mounting Set .....	251
Outer Rear Body Panel .....	262
Outer Rocker Panel .....	239
Outlet, Water .....	370
Overflow Jar Cap, Radiator .....	349
<b>Overhaul Manuals</b> .....	142
Owner's Manual .....	141
Owner's Manual Storage Bag .....	141
Oxygen Sensor Fitting .....	482
Oxygen Sensor Plug .....	482

**P**

<b>Package Tray</b> .....	64-65
<b>Package Tray Insulation</b> .....	64-65
Package Tray Panel .....	256
Package Tray Protector .....	65
Pad, Convertible Top .....	241
Pad, Leaf Spring .....	301
Pad, Park Brake Pedal .....	129
<b>Pad, Pedal</b> .....	128-129
Paint .....	152-154
Paint & Body Manuals .....	144
Paint Mask Set, Wheel .....	337
Paint Seal Gasket Set .....	181
Paint Spray Gun .....	155
Paint System, Brake Caliper/Drum .....	323
<b>Paint Thinner</b> .....	59
Paint, Clear Gloss .....	155
Paint, Coating .....	154, 265
Paint, Engine .....	152
Paint, Engine Refinishing .....	384
Paint, Exhaust .....	154
Paint, Factory Black .....	153
Paint, Inspection Markers .....	153
Paint, Metal-Mimic .....	153
Paint, Rubber Undercoating .....	154
Paint, Trunk .....	155
Paint, Trunk Refinish .....	260
Paint, Trunk Spatter .....	260
Paint, Undercoating .....	265
Paint, Underhood .....	155
Paint, Wheel Coating .....	155
Paint, Wrinkle Finish .....	154
<b>Pan, Floor</b> .....	236-237
Pan, Transmission .....	501-502
Pan, Trunk .....	261
<b>Panel Repair, Sail</b> .....	254
Panel, Cowl Lower .....	231
Panel, Cowl Top Vent Grill .....	231
Panel, Dash .....	219
Panel, Fender Patch .....	229
Panel, Firewall .....	219
Panel, Full Quarter .....	253

Panel, Gauge .....	72-73
Panel, Headlamp Filler .....	203
Panel, Inner Sail Board .....	60
Panel, Interior Door .....	40-46
Panel, Outer Cowl Side .....	231
Panel, Outer Rear Body .....	262
Panel, Package Tray .....	256
Panel, Rear Seat Floor .....	238
Panel, Rear Window to Trunk .....	262
Panel, Rocker .....	239
Panel, Rocker Reinforcement .....	239
Panel, Roof .....	240
Panel, Sail .....	54-57
Panel, Seat Back .....	30
Panel, Seat Side .....	30
Panel, Shock Tower .....	299
Panel, Tail .....	262
Panel, Taillamp .....	262
Panel, Toe Board .....	238
Panel, Trunk .....	258
Panel, Wheelhouse .....	254-255
Panels, Kick .....	8
Park Brake Adjustment Nuts .....	322
Park Brake Assembly .....	130
<b>Park Brake Cable</b> .....	321
Park Brake Cable Connector .....	322
Park Brake Cable Mounting Bracket .....	322
Park Brake Cable Retainer .....	322
Park Brake Guide Bar Spring .....	322
Park Brake Lamp Switch .....	97
Park Brake Lamp Switch Clip .....	97
<b>Park Brake Lever Bar</b> .....	321
Park Brake Release Handle .....	322
Park Brake, Push Button .....	321
Park Lamp Assembly .....	204
Park Lamp Bezel .....	205
Park Lamp Bezel Extension Molding .....	188
Park Lamp Lens .....	205
Park Lamp Socket & Wiring .....	206
Park Lamp Socket Boot .....	206
Park Lamp, LED .....	206
Park Lens Gasket .....	206
Park Lens Screw .....	206
Park/Neutral Relay Set .....	547
Park/Turn Signal Pigtail .....	206
Parking Brake Assembly .....	131
<b>Parking Brake Cable Equalizer</b> .....	322
<b>Parking Brake Drum Lever</b> .....	321
Parking Brake Light Jumper Wire .....	537
Parking Brake Pedal Pad .....	129
Parking Brake Release Rod Grommet .....	322
Parking Brake Trim Plate .....	129
Patch Panel, Fender .....	229
Patch, Repair .....	265
Pawl, Door Lock .....	249
PCV Clamp .....	419
PCV Hose Clip .....	419
PCV Valve .....	419
PCV Valve Hose .....	419
Pedal Assembly .....	130
Pedal Assembly, Accelerator .....	126
Pedal Assembly, Brake .....	130
Pedal Assembly, Clutch .....	130
Pedal Assembly, Custom .....	131
Pedal Assembly, Park Brake .....	130
Pedal Assembly, Throttle .....	130
Pedal Bushing, Brake .....	130
Pedal Bushing, Clutch .....	130
<b>Pedal Cover</b> .....	128
Pedal Cover Set .....	129
Pedal Covers .....	126
Pedal Mounting Pin, Accelerator .....	126
<b>Pedal Pad</b> .....	128-129
Pedal Pad, Accelerator .....	126
Pedal Pad, Brake .....	129
Pedal Pad, Clutch .....	129
Pedal Pad, Drive-by-Wire .....	131
Pedal Pin, Brake/Clutch .....	130
Pedal Rod Support, Accelerator .....	127
Pedal Rod, Accelerator .....	126
Pedal Spring, Accelerator .....	126
Pedal Trim Plate .....	128-129
Pedal, Accelerator .....	131
Pedal, Gas .....	126
Pedestal, Gauge Mount .....	83
Perch, Axle Tube .....	300
Petcock, Radiator .....	346
Pickle Fork Set .....	279
<b>Pigtail Connector Install Set</b> .....	538
Pigtail, Alternator .....	450
Pigtail, Back-Up Lamp .....	211

<b>Pigtail, Blower Motor Resistor</b> .....	374
<b>Pigtail, HEI Distributor</b> .....	427
Pigtail, Park/Turn Signal .....	206
Pigtail, Radio .....	92
Pigtail, Speaker .....	92
Pigtail, Stop, Tail & Turn .....	211
Pilot Bushing, Kevlar .....	516
Pin, Door Hinge .....	245
Pin, Hood Latch .....	228
<b>Pinion Bumper, Rear Axle</b> .....	305
Pinion Gear Crush Sleeve .....	304
Pinion Shim Set .....	306
Pinion Wedge .....	300
Pipe, Vacuum Booster .....	412
Pitman Arm .....	277
Pitman Arm Nut and Washer .....	275
Pitman Arm Puller Tool .....	279
Pitman Shaft Lash Adjuster Nut .....	275
Pitman Shaft Lock Washer .....	275
Pivot Ball Frame Side, Bellcrank .....	521
Pivot Ball, Block Side Screw-In .....	521
Pivot Ball, Clutch .....	521
<b>Pivot Pin, Control Lever</b> .....	104
Plate, Brake Backing .....	325-326
Plate, Carburetor Linkage .....	469
Plate, Console .....	120
Plate, Console Gauge Mounting .....	122
<b>Plate, Fuel Pump Block Off</b> .....	457
Plate, Remote Mirror Pivot .....	251
<b>Plate, Seat Belt Anchor</b> .....	37
Plate, Shift Boot .....	125
Plate, Subframe Mounting .....	386
<b>Pliers, Brake Cable</b> .....	322
Pliers, Brake Spring .....	329
Pliers, Hose Clamp .....	351
Pliers, Spark Plug Terminal .....	436
Plug, AIR/Smog Tube Eliminator .....	482
<b>Plug, Alternator Generator Light</b> .....	450
Plug, Door Weatherstrip .....	179
Plug, Floor Pan .....	237, 261
<b>Plug, Gas Tank Drain</b> .....	454
Plug, Oxygen Sensor .....	482
<b>Plug, Plastic Hole</b> .....	183
Plug, Positraction Differential Fill .....	307
Plug, Rear Axle Housing Drain .....	305
<b>Plug, Speedometer Hold Block Off</b> .....	514
Plug, Trunk Pan .....	261
Plugs, Door Panel .....	47
Plugs, Freeze .....	389
Plugweld Pliers .....	264
Points, Ignition .....	429, 432
Polish Balls .....	150
Polyurethane Bushing Set .....	301
Polyurethane Bushings, Control Arm .....	282
Positraction Decal .....	167
Positraction Differential Fill Plug .....	307
Positraction Unit .....	304
Poster .....	137
<b>Power Booster</b> .....	311
Power Booster Repair Set .....	312
Power Brake Booster .....	312
Power Brake Booster Check Valve .....	312
Power Brake Booster Hose .....	313
Power Brake Booster Hose Bracket .....	313
<b>Power Brake Booster Tube</b> .....	313
Power Cylinder Mount Set .....	275
Power Delay, Radio .....	87
Power Disc Brake Identifier Tag .....	169
<b>Power Door Lock Conversion Set</b> .....	542
Power Door Switch .....	51
Power Feed Wire, AC .....	538
Power Outlet, Auxiliary .....	100
Power Steering Belt .....	271, 363
Power Steering Cap .....	269
Power Steering Conversion Set .....	275
<b>Power Steering Cooler</b> .....	272
Power Steering Fluid .....	270
<b>Power Steering Fluid Filter</b> .....	270
<b>Power Steering Gearbox</b> .....	274
<b>Power Steering Hose</b> .....	272, 276
Power Steering Hose Bracket .....	272
Power Steering Hose Clamp .....	272
Power Steering Hose Fitting .....	272
Power Steering Hose Retainer .....	272
Power Steering Pulley Nut .....	271
<b>Power Steering Pump</b> .....	268-269
Power Steering Pump Belt .....	363
<b>Power Steering Pump Brackets</b> .....	270
<b>Power Steering Pump Mounting Stud</b> .....	270, 275
<b>Power Steering Pump Pulley</b> .....	271, 403-404
Power Steering Pump Rebuild Set .....	269

Power Steering Reservoir.....	269
Power Steering Slave Cylinder.....	275
<b>Power Steering U-Joint.....</b>	<b>273</b>
Power Steering Valve.....	273
Power Tailgate Window Feed Wire.....	537
Power Trunk Lock Conversion.....	543
Power Valve, Carburetor.....	467
<b>Power Window Conversion Set.....</b>	<b>544</b>
Power Window Harness Boot.....	544
<b>Power Window Motor.....</b>	<b>544</b>
Power Window Relay.....	544
<b>Power Window Reversing Relay.....</b>	<b>544</b>
<b>Power Window Set.....</b>	<b>544</b>
<b>Power Window Switch.....</b>	<b>51, 544</b>
Power Window Switch Base.....	51
Power Window Switch Clip.....	51
Power Window Switch Retainer.....	51
<b>Power Window Wiring Harness.....</b>	<b>544</b>
<b>Power Window Wiring S-Boots.....</b>	<b>544</b>
Powerglide Shifter Rod.....	512
Pre-Delivery Inspection Sheet.....	173
PreFilter Screen, Oil.....	398
Pressure Gauge Tubing.....	82
<b>Pressure Plate to Flywheel Bolt.....</b>	<b>516</b>
Printed Circuit Board.....	67
Pro Paint Gauge.....	264
Pro-Crimp Tool.....	437
<b>Proportioning Valve.....</b>	<b>316-317</b>
Proportioning Valve Bleed Tool.....	317
Proportioning Valve Brackets.....	317
Prying & Scraping Tools.....	193
<b>PS Control Valve Ball Castle Nut.....</b>	<b>273</b>
<b>PS Control Valve Cap.....</b>	<b>273</b>
<b>PS Control Valve Seal and Boot Kit.....</b>	<b>273</b>
<b>PS Slave Cylinder Rebuild/Mounting Kit.....</b>	<b>275</b>
Pulley Nut, Power Steering.....	271
Pulley Reinforcement, Water Pump.....	368
Pulley Set, Custom.....	403
Pulley Set, Serpentine Belt.....	403
Pulley System.....	403
<b>Pulley, Crankshaft.....</b>	<b>403-404</b>
<b>Pulley, Power Steering Pump.....</b>	<b>271</b>
Pulley, Smog Pump.....	482
<b>Pulley, Water Pump.....</b>	<b>368-369</b>
Pump, Fuel.....	457
Pump, Oil.....	391-392
<b>Pump, Power Steering.....</b>	<b>268-269</b>
Pump, Smog.....	482
<b>Pump, Water.....</b>	<b>364-365</b>
<b>Pump, Windshield Washer.....</b>	<b>233-234</b>
Push Start Warning Decal.....	172
Push-In Retainer.....	222
Pushrod Boot, Rear.....	312
Pushrod, Clutch.....	520
Pushrod, Clutch Pedal to Bellcrank.....	520
Pushrod, Fuel Pump.....	457
Pushrod, Manual Brake.....	315
<b>Pushrod, Master Cylinder.....</b>	<b>315</b>
Pushrods.....	407

## Q

QUADRALink Rear Suspension.....	295
Quarter Glass.....	185
Quarter Glass Frame.....	185
Quarter Glass Window Hardware.....	187
Quarter Panel.....	253
Quarter Panel Emblem.....	160
Quarter Panel Pillar Post, Interior.....	60
Quarter Panel Skin.....	253-254
Quarter Panel, Full.....	253
Quarter Patch Panel.....	254
Quarter Sail Panel Fastener.....	60
Quarter Stick Shifter Cover.....	510
Quarter Window Sash.....	190
Quarter Window Trim Molding.....	190
Quarter Window Vertical Seal.....	177
Quick Release Battery Cable Bolts.....	531

## R

<b>Rack and Pinion Hoses.....</b>	<b>276</b>
Rack and Pinion Steering Shaft.....	276
Rack and Pinion Steering System.....	276
Rack and Pinion w/Tilt Steering Column.....	276
<b>Radiator.....</b>	<b>344-346</b>
<b>Radiator Cap.....</b>	<b>348</b>
<b>Radiator Cooling Fan.....</b>	<b>356-358</b>
<b>Radiator Fan Blade.....</b>	<b>354</b>
<b>Radiator Fan Shroud.....</b>	<b>350</b>
<b>Radiator Fan Shroud Bracket.....</b>	<b>350</b>

Radiator Filler Panel.....	347
Radiator Hose.....	352
<b>Radiator Hose Adapter.....</b>	<b>353</b>
Radiator Hose Reducer Bushing.....	352
Radiator Isolators.....	347
Radiator Mounting Bolts.....	347
<b>Radiator Mounting Brackets.....</b>	<b>347</b>
<b>Radiator Mounting Nut.....</b>	<b>347</b>
Radiator Mounting Set.....	347
<b>Radiator Overflow Hose.....</b>	<b>349</b>
<b>Radiator Overflow Hose Retainer.....</b>	<b>349</b>
Radiator Overflow Jar Cap.....	349
<b>Radiator Overflow Tank.....</b>	<b>349</b>
Radiator Petcock.....	346
<b>Radiator Petcock and Hose.....</b>	<b>347</b>
Radiator Retainer Pad.....	347
<b>Radiator Rubber Mounting Pads.....</b>	<b>347</b>
Radiator Support.....	218
Radiator Support Bushing & Hardware.....	218
Radiator Support to Fan Shroud Seal.....	350
Radiator Support Top.....	218
Radiator Tag.....	347
<b>Radio.....</b>	<b>84-85</b>
Radio Amplifier.....	89
Radio Antenna.....	93-94
Radio Antenna Body.....	94
Radio Bezel.....	86
Radio Color Bar.....	87
Radio Connector.....	92
Radio Delete Plate.....	86
<b>Radio Knob.....</b>	<b>86-87</b>
Radio Lens.....	86
Radio Mount, Glove Box.....	87
Radio Music Adapter.....	88
Radio Power Delay.....	87
Radio Screen Protector.....	87
Radio Shaft Nut.....	87
Radio SiriusXM Tuner.....	88
Radio Sound System.....	88
<b>Radio Speaker.....</b>	<b>89-91</b>
Radio Support Bracket.....	87
<b>Radio USB Port.....</b>	<b>88</b>
Rag Joint, Steering.....	103, 273
Rally Stripe Set.....	175
Rally Wheel Center Caps.....	330-331
Rally Wheel Instruction Card.....	169
Rally Wheel Lug Nut.....	332
Rally Wheel Ornament Screw.....	330
<b>Rally Wheels.....</b>	<b>330-331</b>
Ramps, Vehicle.....	147
Rear Armrest.....	49
Rear Axle.....	302, 304
Rear Axle Bearing.....	304
Rear Axle Bearing Seal.....	304
<b>Rear Axle Flange U-Bolt.....</b>	<b>303</b>
Rear Axle Housing Drain Plug.....	305
Rear Axle Housing Set.....	303
Rear Axle Lubricant.....	307
Rear Axle Lubrication ID Tag.....	305
<b>Rear Axle Pinion Bumper.....</b>	<b>305</b>
<b>Rear Axle U-Bolt Lock Nut.....</b>	<b>303</b>
<b>Rear Axle U-Bolts.....</b>	<b>303</b>
Rear Body Intermediate Harness.....	537
Rear Body Lamp Wiring Harness.....	536
Rear Brake Hose Tee Fitting.....	320
Rear Brake Regulator Valve.....	315
Rear Brake Set.....	310
<b>Rear Bumper.....</b>	<b>220</b>
Rear Cove Molding.....	192
Rear Door Fixed Window Seal.....	177
Rear Drum Brake Spring.....	326
<b>Rear End Cover.....</b>	<b>306-307</b>
Rear End Main Cap Stud.....	305
<b>Rear End Oil Service/Install Kit.....</b>	<b>303</b>
Rear Frame Rail Floor Brace.....	238
<b>Rear Main Seal.....</b>	<b>393</b>
Rear Panel Emblem.....	160-161
Rear Panel Molding.....	192
Rear Quarter Window Guide.....	186
Rear Radio Speaker Cover.....	88
Rear Seal Adapter.....	393
<b>Rear Seat Back Panel.....</b>	<b>238</b>
<b>Rear Seat Back Support.....</b>	<b>238</b>
Rear Seat Floor Hook.....	239
Rear Seat Floor Pan.....	238
Rear Seat Floor Panel.....	238
Rear Seat to Trunk Pan.....	238
Rear Side Panels, Interior.....	40-42
Rear Side Window Seal.....	177
Rear Speaker Enclosure Retainer.....	88
Rear Suspension, QUADRALink.....	295

Rear Under Seat Floor Brace.....	239
Rear View Mirror Adhesive.....	63
Rear View Mirror Bracket.....	63
Rear View Mirror Mount.....	63
Rear View Mirror Mounting Screw.....	62
Rear Window Defogger Wiring Harness.....	536
Rear Window Molding.....	190
Rear Window Molding Clip.....	194
Rear Window to Trunk Panel.....	262
Rear Window Trim Molding.....	59
Rebuild Set, Brake Master Cylinder.....	315
Rebuild Set, Power Steering Pump.....	269
Rebuild Set, Transmission.....	500
Rebuild/Repair Set, Carburetor.....	467
Receiver Bracket, AC.....	383
<b>Receiver/Dryer, AC.....</b>	<b>382</b>
<b>Recovery Tank.....</b>	<b>349</b>
<b>Reduced Barrier Hoses.....</b>	<b>378</b>
Reducer, Header Collector.....	476
Registration Holder.....	106
Regulator, Fuel Bypass.....	463
Regulator, Fuel Pressure.....	463
Regulator, Voltage.....	450
Regulator, Window.....	187
Reinforcement Ring, Shift Hole.....	237
Relay and Fuse, Headlamp.....	200
<b>Relay Block.....</b>	<b>545</b>
Relay Cover, Firewall.....	544
<b>Relay Panel, Banked.....</b>	<b>547</b>
Relay Puller Pliers.....	546
Relay, Auxiliary Lamp.....	547
Relay, Blower Motor.....	374
Relay, Brake Lamp.....	547
<b>Relay, Electric Fan.....</b>	<b>361</b>
Relay, Electric Water Pump.....	366
<b>Relay, Fuel Pump.....</b>	<b>463, 547</b>
Relay, Horn.....	111
<b>Relay, HVAC/Compressor.....</b>	<b>538</b>
Relay, Manual TCS.....	525
Relay, Power Window.....	544
<b>Relay, Timed Cooling System.....</b>	<b>547</b>
Release Bearing, Hydraulic.....	519
Release Handle, Park Brake.....	322
Remote Battery Disconnect Switch.....	546
Remote Control Battery Disconnect.....	546
Remote Door Opener.....	542
<b>Remote Mirror Bezel Retainer.....</b>	<b>251</b>
Remote Mirror Pivot Plate.....	251
Remote Starter.....	97
Remote Starter Solenoid.....	446
Remote Starting Switch.....	384
Repair Kit, Exhaust.....	484
Repair Manual.....	141
Repair Patch.....	265
Repair Set, Floor Pan.....	265
Repair Set, Trunk.....	265
Repair Set, Washer Pump.....	234
Reservoir Remote, Power Steering.....	269
<b>Reservoir Tank, Coolant.....</b>	<b>349</b>
Reservoir, Clutch Fluid.....	519
Reservoir, Power Steering.....	269
<b>Reservoir, Remote Clutch.....</b>	<b>519</b>
<b>Residual Pressure Valve.....</b>	<b>317</b>
<b>Resistor Pigtail, Blower Motor.....</b>	<b>374</b>
Resistor, Blower Motor.....	374
Resistor, Gauge.....	82
Resistor, Ignition Coil.....	431
Retainer Clip, Kick Down Rod.....	127
<b>Retainer Clip, Vacuum Advance.....</b>	<b>426</b>
<b>Retainer Clips, Wiring Harness.....</b>	<b>549</b>
Retainer Nut, Taillamp.....	209
Retainer Spring, Brake Pad.....	325
Retainer, Accelerator Cable.....	127
<b>Retainer, Cigarette Lighter.....</b>	<b>100</b>
<b>Retainer, Column Lock Plate.....</b>	<b>104</b>
Retainer, Door Jamb Windlace.....	179
Retainer, Door Lock Cylinder.....	249
Retainer, Glove Box Lock.....	99
Retainer, Headliner.....	58
Retainer, Heater Box Wire.....	373
Retainer, Heater Core Tube.....	372
Retainer, Horn Button Cap.....	110
Retainer, Park Brake Cable.....	322
Retainer, Power Steering Hose.....	272
Retainer, Push-In.....	222
<b>Retainer, Radiator Overflow Hose.....</b>	<b>349</b>
Retainer, Rear Speaker Enclosure.....	88
Retainer, Seat Belt.....	37
Retainer, Shift Slider.....	124
Retainer, Shifter Plate Bulb.....	124
Retainer, Shoulder Harness Strap.....	37



Retainer, Starter Wire Harness.....	446
Retainer, Threaded Steel.....	222
Retainer, Trunk Lock.....	257
Retainer, Wheel Center Cap.....	337
Retainer, Wheel Ornament.....	335
Retainers, Hood Insulation.....	224
Retaining Clip, Nylon.....	222
Retaining Pin, Brake Shoe.....	326
Retaining Ring, Headlamp.....	201
Retractor Cover, Seat Belt.....	37
Retractor, Seat Belt.....	36
Return Spring Extension Bracket.....	520
Return Spring Extension Rod.....	520
Return Spring, Clutch Fork.....	520
Return Spring, Door Mechanism.....	52
Return Spring, Steering Column Lock Shoe.....	104
Return, Throttle Spring.....	473
Reverse Lockout Assembly.....	521
Reverse Lockout, Transmission.....	511
Ring & Pinion Installation Set.....	305
Ring & Pinion Shim Set.....	306
Ring & Pinion Installation Set.....	306
Ring & Pinion Set.....	305
Ring Gear, Flywheel.....	517
Ring, Gauge Mount Angle.....	83
Rivets, Cowl Tag.....	231
Rocker Arm Locks.....	407
Rocker Arm Stud.....	407
Rocker Arm Stud Girdle.....	407
Rocker Arms.....	407
Rocker Arms, Roller.....	407
Rocker Molding Screw.....	191
Rocker Panel Flap.....	239
Rocker Panel Molding.....	191
Rocker Panel Molding Clip.....	191
Rocker Reinforcement Panel.....	239
Rocker Switch Panel.....	547
Rod, Brake Booster.....	312
Rod, Choke.....	471
Rod, Clutch.....	521
Rod, Door Lock.....	246
Rod, Fan Mounting.....	360
Rod, Return Spring Extension.....	520
Rod, Shift.....	512
Rod, Spare Tire Hold Down.....	260
Rod, Strut.....	282
Roller Pilot Bearing.....	516
Roller Rocker Arms.....	407
Roller, Door Window.....	187
Roller, Input Shaft Gear.....	515
Roof Drip Molding.....	190
Roof Drip Rail Connectors.....	240
Roof Panel Brace.....	240
Roof Panels.....	240
Roof Rail Weatherstrip.....	180
Roof Rail Weatherstrip Screws.....	180
Roof Side Rail Structure.....	240
Roof Side Rail Support.....	240
Rotor, Brake.....	323
Rotor, Ignition.....	428-429
Rubber Bumper, Glove Box Door.....	120, 183
Rubber Bumper, Seat Back.....	29, 183
Rubber Stopper Set.....	182
Rubber Undercoating Paint.....	154
Rust Removal.....	151

**S**

Safety Loop, Driveshaft.....	303
Sail Panel.....	54-57
Sail Panel Board.....	60
Sail Panel Fastener, Quarter.....	60
Sail Repair Panel.....	254
Sales Brochure.....	141
Sash Channel, Door Window.....	186
Sash, Quarter Window.....	190
Scoop, Hood.....	225
Scraping Tool.....	193
Screen, Oil Pump Intake.....	392
Screen, Windshield Washer.....	234
Screw and Nut, License Plate.....	222
Screw Rocker Molding.....	191
Screw Set, Exterior.....	218
Screw Set, Interior.....	10
Screw, Blower Motor Mounting.....	374
Screw, Blower Motor Resistor.....	374
Screw, Body Side Molding.....	189
Screw, Carburetor Float Bowl.....	469
Screw, Choke Thermostat Mounting.....	471
Screw, Console Shift Plate.....	124
Screw, Convertible Top Latch.....	243

Screw, Dash Vent.....	375
Screw, Dome Lamp.....	61
Screw, Door Latch.....	246
Screw, Door Striker.....	246
Screw, Glove Box.....	99
Screw, Headlamp Bezel.....	203
Screw, Headlamp Retaining Ring.....	201
Screw, Heater Box Resistor.....	373-374
Screw, Interior Chrome.....	8
Screw, Mirror to Bracket.....	251
Screw, Park Lens.....	206
Screw, Rally Wheel Ornament.....	330
Screw, Rear View Mirror Mounting.....	62
Screw, Sill Plate.....	8
Screw, Steering Wheel Mounting.....	107
Screw, Sun Visor Support.....	60
Screw, Wheel Opening Molding.....	192
Screw, Wiper Transmission Mounting.....	235
Screws Mounting, Accelerator Pedal to Firewall.....	127
Screws, Armrest Base.....	49
Screws, Door Hinge.....	245
Screws, Fuse Block.....	545
Screws, Lens.....	206
Screws, Steering Wheel.....	113
Screws, Trim.....	10
Screws, Windshield Molding.....	194
Screws, Windshield/Back Glass Molding Clip.....	194
Seal Puller Tool.....	328
Seal, AC Compression O-Ring.....	380
Seal, AC Tube Foam.....	372
Seal, Air Cleaner Lid.....	439
Seal, Air Cleaner Rubber.....	443
Seal, Bellcrank.....	521
Seal, Blower Motor Firewall.....	375
Seal, Bumper to Body.....	181
Seal, Door Jamb U-Shape.....	179
Seal, Engine Valve Stem.....	407
Seal, Epoxy Putty.....	265
Seal, Evaporator Box.....	382
Seal, Firewall to Cowl.....	181
Seal, Firewall Wire Boot.....	548
Seal, Glass Installation.....	177
Seal, Headlamp Bezel.....	203
Seal, Heater Box.....	373
Seal, Heater Core.....	372
Seal, Hood to Cowl.....	181
Seal, Kick Panel.....	8
Seal, Oil Dipstick Tube.....	394
Seal, Quarter Window Vertical.....	177
Seal, Radiator Support to Fan Shroud.....	350
Seal, Rear Axle Bearing.....	304
Seal, Rear Door Fixed Window.....	177
Seal, Rear Main.....	393
Seal, Rear Side Window.....	177
Seal, Shift Slider.....	124
Seal, Shifter AT.....	124
Seal, Shifter Lever.....	125
Seal, Steering Column to Firewall.....	181
Seal, Steering Gear End Plug.....	275
Seal, Steering Shaft Coupler.....	103
Seal, Tailgate.....	180
Seal, Tailgate Glass End.....	180
Seal, Tailgate Top.....	180
Seal, Transfer Tube O-Ring.....	469
Seal, Wheel Bearing.....	328
Seal, Wiper Motor to Firewall.....	235
Seal, Wiring Harness to Firewall.....	181
Sealant, Threadlocker.....	285
Sealer, Fuel Tank.....	453
Seals, Cowl Vent Panel Side.....	231
Seals, Oil Pan.....	393
Seam Sealer Strip Caulk.....	181
Seam Tape.....	14
Seat Adjuster Knob.....	31
Seat Back Panel.....	30
Seat Back Panel, Rear.....	238
Seat Back Rubber Bumper.....	183
Seat Back Stopper.....	29
Seat Belt Anchor Bolt.....	37
Seat Belt Anchor Plate.....	37
Seat Belt Bolt Cover.....	37
Seat Belt Buckle Cover.....	36
Seat Belt Emblem.....	36
Seat Belt Hardware.....	39
Seat Belt Harness Pads.....	35
Seat Belt Instruction Card.....	167
Seat Belt Operation Sun Visor Sleeve.....	167
Seat Belt Retainer.....	37
Seat Belt Retractor.....	36
Seat Belt Retractor Cover.....	37
Seat Belts.....	36, 38-39

Seat Bracket.....	29
Seat Filler Panel Stopper.....	29
Seat Foam.....	28
Seat Frame.....	28
Seat Frame Support.....	29
Seat Headrest.....	31
Seat Headrest Bracket, Bucket.....	31
Seat Headrest Cover.....	31
Seat Headrest Lock, Bucket.....	31
Seat Heater.....	29
Seat Molding End Cap.....	30
Seat Molding Trim.....	30
Seat Mounting Adapter, Bucket.....	33-34
Seat Pivot Cap.....	30
Seat Recliner Mechanism Cover.....	33
Seat Shelf.....	64-65
Seat Shelf Corner Trim.....	65
Seat Shelf Insulation.....	64-65
Seat Shelf Protector.....	65
Seat Side Panel.....	30
Seat Support Spring.....	28
Seat to Trunk Partition, Rear.....	65
Seat Track.....	29
Seat Track Adjusting Spring.....	29
Seat Upholstery.....	20-27
Seat Upholstery Emblems.....	28
Seat, Front Coil Spring Upper.....	298
Seat/Shoulder Belt Guide Escutcheon.....	37
Seats, Bucket.....	32-34
Self-Locking Hex Nut.....	195
Sending Unit Float, Fuel.....	456
Sending Unit Locking Ring.....	456
Sending Unit Screen, Fuel.....	456
Sending Unit, Coolant Temperature.....	346
Sending Unit, Fuel.....	71
Sending Unit, Fuel Tank.....	71
Sending Unit, Gear Indicator.....	82
Sending Unit, Oil Pressure.....	392
Sending Unit, Speedometer.....	70
Sending Unit, Temperature.....	346, 360
Sensor, Fan Temperature.....	360
Sensor, Speed.....	71
Sensor, Throttle Position.....	467
Serpentine Belt Pulley.....	403
Service Manual, Factory.....	140
Shackle Bushing, Leaf Spring.....	301
Shackle Set, Leaf Spring.....	300
Shackles, Leaf Spring Offset.....	294
Shaft, Control Arm.....	281
Shaft, Distributor Intermediate.....	426
Shaft, Steering.....	103
Shaft, Trunk Lock Handle.....	257
Shaft, Upper Control Arm.....	281
Shaved Doors Emergency Entry.....	542
Shaved Power Door Handle Set.....	542-543
Sheet Metal Fastener Kit.....	264
Sheet Metal Tools.....	263
Sheet, Factory Build.....	173
Shield, Bellhousing Dust.....	516
Shield, Brake Line.....	318
Shield, Fuel Line.....	461
Shield, Headlamp.....	201
Shield, Headlamp Bucket.....	203
Shift Arm Mounting Stud.....	525
Shift Bezel and Boot.....	525
Shift Boot.....	125
Shift Boot and Plate.....	523
Shift Boot Plate.....	125
Shift Button.....	513
Shift Button Spring.....	513
Shift Cable Bracket.....	511
Shift Detent Lever.....	511
Shift Handle Adapter.....	524
Shift Handle, Manual.....	527
Shift Hole Reinforcement Ring.....	237
Shift Hump.....	237
Shift Indicator.....	105
Shift Indicator Lens.....	105
Shift Indicator Overlay.....	105
Shift Kit.....	500
Shift Knob.....	513
Shift Knob Adapter.....	526
Shift Knob Clip.....	512
Shift Knob, Manual.....	526-527
Shift Lens, Console.....	124
Shift Lever Bushings.....	524
Shift Lever with Button.....	511
Shift Light.....	82, 436
Shift Linkage Rod.....	512
Shift Linkage, Auto Transmission.....	512
Shift Plate Bulb Retainer.....	124

Shift Plate, Console.....	124	Sound Dampening, Radio.....	89	Sta-Dri Pouches.....	146
Shift Retainer.....	125	Sound Deadener.....	10-14	Stabilizer Bar.....	283
Shift Rod.....	512	Spacer, Air Cleaner.....	441	Stabilizer Rod, Shifter.....	525
Shift Slider Retainer.....	124	Spacer, Alternator.....	451	Stainless Steel Brake Flexlines.....	319
Shift Slider Seal.....	124	Spacer, Compressor.....	380	Stamp, Fuel Hose.....	454
Shifter Arm, Muncie.....	524	Spacer, Cooling Fan.....	355	Stamps, Hose.....	454
Shifter Boot.....	525	Spacer, Front Coil Spring.....	298	Starter.....	445
Shifter Boot and Ring.....	512	Spacer, Power Steering Pump.....	270	Starter Button.....	446
Shifter Bracket.....	511	Spacer, Steering Wheel.....	113	Starter Head Shield.....	446
Shifter Bushing.....	512	Spacer, Thermostat.....	371	Starter Motor Brace.....	446
Shifter Cable.....	511	Spacer, Wheel.....	337	Starter Motor Brushes.....	446
Shifter Conversion Set.....	508	Spacers, Headlamp.....	201	Starter Motor Power Lead Wire.....	535
Shifter Handle.....	513	Spanner Wrench.....	299	Starter Mounting Bolts.....	446
Shifter Installation Set.....	522	Spare Tire Anchor Plate.....	260	Starter Shims.....	446
Shifter Lever Seal.....	125	Spare Tire Cover.....	259	Starter Solenoid.....	446
Shifter Lever, Manual.....	524	Spare Tire Decal.....	167	Starter Wire Harness Retainer.....	446
Shifter Lower Dust Shield.....	525	Spare Tire Hold Down Nut.....	260	Steel Bolt.....	222
Shifter Nut.....	525	Spare Tire Hold Down Rod.....	260	Steel Exhaust Manifold Tube.....	480
Shifter Rebuild Set.....	525	Spare Wheel Lock Instruction Card.....	169	Steering Arm.....	327
Shifter Rod Retainer Clip.....	525	Spark Guard.....	437	Steering Box Mounting Bolt.....	275
Shifter Rod, Powerglide.....	512	Spark Plug.....	434	Steering Box Mounting Hardware.....	275
Shifter Seal, AT.....	124	Spark Plug Gap Tool.....	436	Steering Column Adapter.....	293
Shifter Side Grips.....	513	Spark Plug Terminal Pliers.....	436	Steering Column Clamp.....	102
Shifter Stabilizer Rod.....	525	Spark Plug Thread Chaser.....	436	Steering Column Cover.....	104
Shifter Swivel, Console.....	512	Spark Plug Wire Heat Shield.....	436	Steering Column Floor Mount.....	104
Shifter, Automatic.....	509-511	Spark Plug Wire Looms.....	436	Steering Column Installation Set.....	103
Shifter, Manual Transmission.....	523	Spark Plug Wire Puller.....	436	Steering Column Lever.....	105
Shim Set, Ring & Pinion.....	306	Spark Plug Wire Separators.....	436-437	Steering Column Lock Shoe Return Spring.....	104
Shim, Body Alignment.....	218	Spark Plug Wires.....	433-435	Steering Column Shaft Sphere.....	103
Shim, Motor Mounts.....	387	Speaker.....	91-92	Steering Column Switch Conversion Kit.....	104
Shims, Distributor Housing.....	426	Speaker Grill, Kick Panel.....	92	Steering Column Switch Pigtailed.....	104
Shims, Starter.....	446	Speaker Grill, Rear.....	92	Steering Column to Floor Cover.....	104
Shock Absorber.....	298-299	Speaker Mounting Studs, Rear.....	92	Steering Column U-Joint.....	103
Shock Absorber Mounting Hardware.....	298	Speaker Pigtail.....	92	Steering Column Wedge.....	103
Shock Bolt.....	299	Speaker Wire Harness.....	92	Steering Column, Tilt.....	102
Shock Decal.....	172	Speaker, Kick Panel.....	92	Steering Control Valve Hose.....	272
Shock Mounting Hardware.....	299	Speaker, Radio.....	90-91	Steering Coupler Hardware.....	273
Shock Tower.....	299	Speed Sender, GPS.....	71	Steering Coupling Joint.....	273
Shock Tower Bolt.....	299	Speed Sensor.....	71	Steering Gear End Plug Seal.....	275
Shock, Mini-Tub Rear.....	295	Speed Warning Cable Bracket.....	70	Steering Knuckle Spindle Washer.....	328
Shop Manual.....	140	Speed Warning Control Cable.....	70	Steering Nut Set.....	328
Short Hub Adapter.....	113	Speed Warning Wire Harness.....	535	Steering Rag Joint.....	273
Shoulder Belt Escutcheon.....	37	Speedometer.....	68	Steering Shaft.....	103
Shoulder Harness Strap Retainer.....	37	Speedometer Cable.....	70	Steering Shaft Bearing Set.....	103
Shroud, Steering Wheel.....	108	Speedometer Cable Clip.....	70	Steering Shaft Coupler Seal.....	103
Side Marker Bezel Gasket.....	208	Speedometer Cable Grommet.....	70	Steering Shaft, Rack and Pinion.....	276
Side Marker Lamp.....	207-208	Speedometer Drive Converter.....	71	Steering Stabilizer.....	278
Side Marker Lamp Bezel.....	207	Speedometer Drive Gear Clip.....	70	Steering System, Rack and Pinion.....	276
Side Marker Lamp Gasket.....	208	Speedometer Driven Gear.....	71	Steering System, Tru Turn.....	296
Side Marker Lamp Socket.....	208	Speedometer Gear Housing.....	70	Steering Tension Nut.....	103
Side Marker Lens.....	207	Speedometer Hole Block Off Plug.....	514	Steering U-Joint.....	103
Side Marker Lens Gasket.....	208	Speedometer Sending Unit.....	70	Steering Wheel.....	108-109, 112-115, 117-119
Side Marker Medallion.....	208	Sphere, Steering Column Shaft.....	103	Steering Wheel Adapter.....	102, 104, 115, 118-119
Side Panel, Interior Quarter.....	45	Spindle Nut & Cotter Pin Kit.....	328	Steering Wheel Brodie Knob.....	137
Side Panel, Seat.....	30	Spindle, Disc Brake.....	327	Steering Wheel Center Cap.....	119
Signs.....	137	Spindle, Drop Disc Brake.....	327	Steering Wheel Cover.....	119
Sill Plate Emblem.....	9	Spindle, Drum Brake.....	327	Steering Wheel Horn Button.....	107
Sill Plate Extension.....	9	Spinner Wheel Center Cap.....	341	Steering Wheel Hub.....	107
Sill Plate Screw, Door.....	8	Spinner, Wheel Cover.....	334-335	Steering Wheel Kit.....	112, 119
Sill Plate, Door.....	9	Spinner, Wire Wheel Cover.....	335	Steering Wheel Lock.....	113
Ski Cap.....	134	Spinners, Wheel Cover.....	335	Steering Wheel Mounting Screw.....	107
Skin, Quarter Panel.....	253-254	Splash Apron Set, Fender Well.....	181	Steering Wheel Nut.....	107
Slave Cylinder, Power Steering.....	275	Spoiler, Front.....	220	Steering Wheel Puller Tool.....	112
Sleeve and Grommet, Accelerator Rod.....	127	Spotweld Chisel.....	264	Steering Wheel Quick Release.....	113
Sleeve Bracket, Sway Bar.....	283	Spotweld Cutter.....	263	Steering Wheel Screws.....	113
Sleeve, Brake Booster.....	312	Spray Adhesive.....	12, 14, 59	Steering Wheel Shroud.....	108
Sleeve, Disc Brake Caliper Bolt.....	324	Spray Connector Tee.....	234	Steering Wheel Spacer.....	113
Sleeve, Ignition Starting Instruction.....	170	Spray Gun, Paint.....	155	Stencil, Valve Cover.....	417
Sleeve, Seat Belt Operation Sun Visor.....	167	Spray-On Acoustic Insulation.....	14	Stereo.....	84-85
Sleeves, Spark Plug Wire.....	436	Spread Bore Sealing Plate.....	468	Stereo Antenna.....	93-94
Sleeves, Tie Rod.....	278	Spring Bracket, Accelerator.....	470	Stereo Bezel.....	86
Smog Check Valve.....	482	Spring Compressor Tool, Valve.....	384	Stereo Connector.....	92
Smog Diverter Elbow.....	482	Spring, Accelerator Pedal.....	126	Stereo Knob.....	86-87
Smog Pump.....	482	Spring, Accelerator Return.....	470	Stereo Power Delay.....	87
Smog Pump Belt.....	363, 482	Spring, Carburetor Return.....	470	Stereo Support Bracket.....	87
Smog Pump Bracket.....	482	Spring, Clutch Fork Repair.....	520	Sticker, New Car Window.....	174
Smog Pump Hose Tower Clamp.....	482	Spring, Coil.....	298	Stool, Counter.....	136
Smog Pump Pulley.....	482	Spring, Door Handle.....	245	Stop, Tail and Turn Pigtail.....	211
Smog Tube.....	482	Spring, Fuel Filter.....	459	Stopper Set, Rubber.....	182
Smog Tube Eliminator Plug.....	482	Spring, Headlamp Adjusting.....	201	Stopper, Fuel Door Filler.....	183
Snap Ring Pliers.....	523	Spring, Headlamp Bucket Tension.....	203	Stopper, Glove Box.....	99
Socket and Wiring, Brake Warning Switch.....	315	Spring, Hood Hinge.....	226	Stopper, Rear Seat Filler Panel.....	29
Socket and Wiring, Headlamp.....	200	Spring, Leaf.....	299	Stopper, Vent Window.....	177
Socket and Wiring, Park Lamp.....	206	Spring, Lowering.....	299	Storage Bag, Car Cover.....	5
Socket Assist.....	478	Spring, Park Brake Guide Bar.....	322	Storage Bag, Convertible Top Boot.....	241
Socket, License Lamp.....	213	Spring, Rear Drum Brake.....	326	Storage Bag, Jack.....	260
Socket, Taillamp.....	211	Spring, Seat Support.....	28	Storage Sleeve, Jack Wrench.....	260
Solenoid Control Wire, Idle Stop.....	535	Spring, Seat Track Adjusting.....	29	Striker, Door.....	246
Solenoid, Starter.....	446	Spring, Shift Button.....	513	Striker, Door Lock.....	246
Solenoid, TCS.....	525	Springs, Valve.....	407	Striker, Glove Box Latch.....	99
Solenoid, Throttle.....	467	Squirters, Accelerator Pump.....	467	Striker/Anchor, Trunk Latch.....	257



Stripe Set, Rally	175
Stripe Set, SS	175
Stripes, Yenke	175
Strut Rod	282
Stud Girdle, Rocker Arm	407
Stud Set, Exhaust Manifold	481
Stud, AC Compressor Mounting	381
Stud, Carburetor	470
Stud, Clutch Fork Mounting	520
Stud, Distributor	426
Stud, Fan Clutch to Water Pump	355
Stud, Heat Stove Mounting	480
<b>Stud, Power Steering Mounting</b>	270
Stud, Power Steering Pump Mounting	275
Stud, Rear End Main Cap	305
Stud, Rocker Arm	407
Stud, Shift Arm Mounting	525
Stud, Transmission Lever	511
Stud, Water Outlet	369
<b>Stud, Wheel</b>	337
STV Valve Conversion Set	383
Subframe	293-294
Subframe Assembly	286
Subframe Body Mounting Plates	287
Subframe Connector	294
Subframe Mount Hole Repair Set	286
Subframe Mounting Nut and Cage	287
Subframe Mounting Plate	386
Subframe, Front Frame	294
Subframe/Suspension Set	293
Subwoofer, Radio	89
Sun Visor Tip/Bushing Set	60
<b>Sun Shade</b>	146
Sun Visor	54-57
Sun Visor Bracket	60
Sun Visor Support Screw	60
Sun Visor Vanity Mirror	63
<b>Sunscreens, Windshield</b>	146
Support Bracket, Radio	87
Support Spring, Seat	28
Support, Accelerator Pedal Rod	127
Support, Bucket Seat	239
Support, Bucket Seat Frame	239
Support, Drip Rail	240
Support, Front Frame Rail	238
Support, Hood Latch	227
Support, Radiator	218
Support, Seat Frame	29
Surge Protector	546
Suspension System	288-293, 296
Suspension System, Rear	299
Sway Bar	293
Sway Bar Bracket	284
<b>Sway Bar Bushings</b>	284-285
<b>Sway Bar End Link</b>	284-285
Sway Bar Mounting Bolt	283
Sway Bar Sleeve Bracket	283
<b>Sway Bars</b>	283
<b>Switch Panel, Rocker</b>	547
Switch Retainer, Power Window	51
<b>Switch Thermo, Electric Fan</b>	361
Switch, AC Clutch	378
Switch, Back-Up Lamp	96
Switch, Battery Cutout	533
Switch, Battery Disconnect	546
Switch, Brake Lamp	96
Switch, Door Jamb	61
<b>Switch, Evaporator Thermostatic</b>	382
Switch, Fan	357
Switch, Fan Temperature	362
Switch, Fuel Pump Safety	463
Switch, Headlamp	95
Switch, Heater Fan	374
<b>Switch, Ignition</b>	98
<b>Switch, Ignition Key Buzzer</b>	98
<b>Switch, Kickdown</b>	508
Switch, Manual Transmission	525
Switch, Neutral Safety	96
Switch, Neutral Safety/Back-Up Lamp	96
Switch, Park Brake Lamp	97
Switch, Power Door	51
Switch, Power Window	51
Switch, Remote Starting	384
<b>Switch, Tinary</b>	378
<b>Switch, Toggle</b>	547
<b>Switch, Trunk Release</b>	98
Switch, Turn Signal	106
Switch, Windshield Wiper	98
Synthetic Gear Oil	307

<b>T</b>	
<b>T-56 Magnum Harness</b>	538
T-Shirts	132-133
Tab, Timing	402
Tachometer	69
Tachometer Adapter	81, 425
<b>Tachometer Bulb</b>	81
<b>Tachometer Gauge</b>	80-81
Tachometer Harness	535
Tachometer Noise Filter	81
<b>Tack Strip, Convertible Front</b>	242
<b>Tack Strip, Convertible Rear</b>	242
Tag Decal, Dealer Service	166
Tag, Anti-freeze	166
Tag, Crankcase Vent Valve Service	166
Tag, Generator Warning	166
Tag, Headlight Instruction	169
Tag, Luggage Rack Instruction	167
Tag, Positraction Differential Fill	305
Tag, Power Disc Brake Identifier	169
Tag, Radiator	347
Tag, Rear Axle Lubrication ID	305
Taillamp Panel	262
Tail Panel	262
Tailgate Bumpers and Stops	180
Tailgate Glass End Seals	180
Tailgate Remote Control Clip	257
Tailgate Seal	180
Tailgate Top Seal	180
Tailgate Vertical Window Seal	180
<b>Tailgate Wagon, Glass Channel</b>	186
Taillamp	209
Taillamp Bezel	210
Taillamp Body Gasket	210
Taillamp Gasket	210
<b>Taillamp Housing</b>	210
Taillamp LED Conversion Sets	212
Taillamp LED Lens	211
Taillamp LED Panels	211
Taillamp Lens	209-210
Taillamp Retainer Nut	209
<b>Taillamp Sequencing System</b>	211
<b>Taillamp Socket</b>	211
<b>Taillamp, Sequential LED</b>	212
<b>Taillight Harness Retaining Clips</b>	211
Tailpipe Expander Tool	484
Tailpipe Hanger	484
<b>Tank, Radiator Overflow</b>	349
<b>Tank, Recovery</b>	349
<b>Tape, Emblem Attachment</b>	161
Tape, Glass Setting	185
<b>Tape, Insulation</b>	13
Tape, Wire Harness	548
TCS Switch Wire Harness	538
TCS Switch, Wire Retainer	525
Teddy Bear	132
Tee Fitting, Rear Brake Hose	320
Tee, Distributor Vacuum	427
Tee, Spray Connector	234
<b>Temperature Sender</b>	351
Temperature Sending Unit	360
Temperature Sending Unit Wiring Set	360
Temperature Sending Wire Insulation	360
Temperature Sensor, Fan	360
Temperature Switch	357
Template, Antenna Location	94
Template, Emblem	161
Tension Spring, Accelerator Pedal	126
Terminal Protector, Battery	531
Terminal, Battery Cable	531
<b>Thermal Intake Vacuum Sensor</b>	439
Thermometer, Infrared	384
<b>Thermostat</b>	371
<b>Thermostat Gasket</b>	371
<b>Thermostat Housing</b>	371
Thermostat Housing Bolt Set	369
<b>Thermostat Spacer</b>	371
<b>Thermostat, In-Line Transmission</b>	506
Thermostatic Choke Coil	471
<b>Thermostatic Oil Cooler Line Adapter</b>	398
Thread Cutting Nuts	195
Thread Identifier	384
Threaded Steel Retainer	222
<b>Threadlocker Sealant</b>	285
Throttle Arm, Accelerator	127
Throttle Assembly	131
Throttle Assembly with Pedals	126
<b>Throttle Body Base Plate</b>	471
<b>Throttle Body Base Plate Linkage</b>	471
Throttle Bracket Set	507

Throttle Cable	472
Throttle Cable Bracket	472-473
Throttle Cable Spring	472
<b>Throttle Kickdown Cable Bracket</b>	473
Throttle Lever Arm Pinch Bolt	127, 473
Throttle Pedal	130
Throttle Position Sensor	467
Throttle Solenoid	467
Throttle Spring Return Set	473
Throttle Stud, Carburetor	473
Throttle Valve Cable Bracket	508
Thrust Bearings	299
Tie Rod Adjusters	278
Tie Rod Adjusting Sleeve	277
<b>Tie Rod Dust Boot</b>	278
Tie Rod End	277
<b>Tie Rod End Clamp</b>	279
<b>Tie Rod Ends</b>	278
Tie Rod Sleeve Bolts	279
Tie Rod Sleeves	278
Tilt Column Steering Wheel Adapter	104
Tilt Steering Column	102
Tilt Wheel Release Lever	105
<b>Timed Cooling System Shutdown</b>	547
<b>Timing Chain</b>	401
<b>Timing Cover</b>	400-401
<b>Timing Cover Bolts</b>	402
<b>Timing Cover Gaskets</b>	402
<b>Timing Gear</b>	401
Timing Light	428
Timing Tab	402
<b>Tinary Switch</b>	378
Tip/Bushing Set, Sun Visor	60
Tire Cleaner	150
Tire Dressing	150
Tire Hanger	147
Tire Inflator Bracket	260
Tire Pressure Decal	168
Tire Valve Stem	337
Tires	343
<b>TKX &amp; TKO, 500/600 Pigtail Install</b>	538
Toe Board Panel	238
<b>Toe Board, Front</b>	237
<b>Toggle Switch</b>	547
Tool, Glass Seal Rope-In	193
Tool, Air Conditioning Hose Crimper	378
Tool, Antenna Nut	94
Tool, Antenna Wrench	94
Tool, AutoAnalyzer Digital Multimeter	384
Tool, Battery Cable Crimping	533
Tool, Battery Carrying Strap	532
<b>Tool, Battery Charger</b>	532
Tool, Battery Jump Starter	532
Tool, Battery Post Cleaning	533
Tool, Bearing Race and Seal Driver	328
Tool, Brake Adjustment	329
Tool, Brake Bleeder	329
Tool, Brake Bleeder Wrench	329
<b>Tool, Brake Cable Pliers</b>	322
Tool, Brake Cylinder Hone	329
Tool, Brake Pad Spreader	329
Tool, Brake Proportioning Valve Bleed	317
Tool, Brake Spring Pliers	329
Tool, Brake Spring Removal	329
Tool, Bushing Installation/Removal	282
Tool, Camshaft Installation	384
Tool, Carburetor Float Adjustment	469
Tool, Crankshaft Turning Socket	384
Tool, Degree Wheel	384
Tool, Detail Scraper	174
Tool, Door Aligning Bar	264
Tool, Door Bushing	264
Tool, Door Handle Removal	51
Tool, Door Hanger	264
Tool, Door Hinge Adjuster	264
Tool, Door Hinge Pin Popper	264
Tool, Door Panel	47
Tool, Door Spring	264
Tool, Double Flaring	329
Tool, Electrical Connector Separator	546
Tool, Eliminator Rust Remover	264
Tool, Engine Gasket Maker	406
Tool, Engine Rotation Adapter	384
Tool, Fuel Pump Pressure Tester	459
Tool, Fuel Tank Sender Lock Ring	456
Tool, Funnel	399
Tool, Glass Holder	185
Tool, Glass Molding Clip Installation	193
<b>Tool, Glove Box Lock Nut</b>	99
<b>Tool, Harmonic Balancer</b>	405
Tool, Headlamp Switch Nut	95

Tool, Headliner.....	59
Tool, Hose Clamp Pliers.....	351
Tool, Ignition Switch Bezel Nut.....	97
Tool, IR Thermometer.....	384
<b>Tool, Lockstrip Insert.....</b>	<b>193</b>
Tool, Molding Release.....	193
Tool, Oil Filter Wrench.....	399
Tool, Oil Pressure Switch Socket.....	392
Tool, Oil Pump Primer.....	384
Tool, Pickle Fork.....	279
Tool, Pitman Arm Puller.....	279
Tool, Plugweld Pliers.....	264
Tool, Pro Paint Gauge.....	264
Tool, Pro-Crimp.....	437
Tool, Relay Puller Pliers.....	546
Tool, Seal Puller.....	328
Tool, Seam Buster Chisel.....	264
Tool, Sheet Metal Fastener.....	264
Tool, Side Terminal Battery Wrench.....	533
Tool, Snap Ring Pliers.....	523
Tool, Socket Assist.....	478
Tool, Spark Plug Gapper.....	436
Tool, Spark Plug Hole Thread Chaser.....	436
Tool, Spark Plug Terminal Pliers.....	436
Tool, Spark Plug Wire Puller.....	436
Tool, Spot Weld Chisel.....	264
Tool, Steering Wheel Puller.....	112
Tool, Tailpipe Expander.....	484
Tool, Thread Identifier.....	384
Tool, Top Dead Center.....	384
Tool, Trim Removal.....	193
Tool, Tubing Bender.....	329
Tool, Upholstery.....	59
Tool, Vise Grip Pliers.....	264
Tool, Weatherstrip.....	193
Tool, Window Guide.....	187
Tool, Windshield Molding.....	193
Tool, Windshield Removal.....	193
<b>Tool, Windshield Wiper Arm Remover.....</b>	<b>232</b>
Tool, Wire Crimping.....	546
Tools, Body.....	264
Tools, Body Dent Removal.....	264
Tools, Prying and Scraping.....	193
Tools, Sheet Metal.....	263
Top Dead Center Tool.....	384
<b>Torque Converter.....</b>	<b>499</b>
<b>Torque Converter Bolts.....</b>	<b>499</b>
<b>Torque Converter Cover.....</b>	<b>501</b>
<b>Torque Converter Hardware.....</b>	<b>499</b>
Torque Converter Lockup Control.....	500
Torsion Rods, Trunk Hinge.....	257
Track, Door Window.....	187
Traction Bar.....	298
Traction Bar Bumper.....	298
Transfer Tube O-Rings.....	469
Transistor Ignition Amplifier.....	433
Transmission Cable Bracket.....	469
Transmission Cable Conversion Set.....	508
Transmission Case Drain Plug.....	515
Transmission Control Cable Bracket.....	511
<b>Transmission Cooler Line Fittings.....</b>	<b>504</b>
<b>Transmission Cooler Mounting Set.....</b>	<b>505</b>
<b>Transmission Cooling Oil Pan.....</b>	<b>506</b>
<b>Transmission Crossmember.....</b>	<b>293, 498</b>
<b>Transmission Crossmember Hardware.....</b>	<b>498</b>
Transmission Dipstick.....	503
Transmission Filter Magnet.....	502
Transmission Filter, Automatic.....	502
<b>Transmission Fluid Cooler.....</b>	<b>504-505</b>
Transmission Fluid, Automatic.....	502
Transmission Fluid, Manual.....	518-519
Transmission Gearshift Fork.....	515
Transmission Harness.....	538
<b>Transmission In-Line Thermostat.....</b>	<b>506</b>
<b>Transmission Kickdown Cables.....</b>	<b>507</b>
Transmission Kickdown Rod.....	508
Transmission Kickdown Stud.....	473
Transmission Lever Stud.....	511
<b>Transmission Manual.....</b>	<b>144</b>
Transmission Modulator Vacuum Line.....	504
Transmission Modulator Valve.....	506
<b>Transmission Mount.....</b>	<b>497</b>
<b>Transmission Mount Hardware.....</b>	<b>497</b>
Transmission Oil Cooler Line.....	504
Transmission Pan.....	501-502
Transmission Pan Drain Plug.....	502
Transmission Pan Gasket.....	502
Transmission Pan, Slam Guard.....	502
Transmission Rebuild Set.....	500
<b>Transmission Reverse Lockout.....</b>	<b>511</b>
Transmission Throttle Valve Control Cable.....	507

<b>Transmission, Automatic.....</b>	<b>496</b>
Transmission, Manual.....	514-515
Transmission, Windshield Wiper.....	235
Tray, Battery.....	529
Tray, Windage.....	392
Tremec Transmission Pigtail.....	538
Trim Moldings, Inner.....	60
Trim Plate, Brake Pad.....	129
Trim Plate, Clutch Pedal Pad.....	129
Trim Plate, Park Brake.....	129
Trim Plate, Pedal.....	128-129
Trim Removal Tool.....	193
Trim Ring, Wheel.....	335
Trim Rings, Wheel.....	332-338
Trim Screws.....	10
Trim Tool, Door Panel.....	47
Trim, Headliner.....	59
Trim, Seat Molding.....	30
Trim, Seat Shelf Corner.....	65
<b>Truck Release Switch.....</b>	<b>98</b>
Trunk Carpet.....	259
Trunk Divider.....	256
Trunk Floor Brace.....	261
<b>Trunk Floor Drop Off End Cap.....</b>	<b>261</b>
Trunk Floor to Quarter Filler Panel.....	261
Trunk Gutter Brace.....	261
Trunk Gutter Side Brace.....	261
Trunk Insulator and Trunk Mat.....	258
Trunk Lamp Assembly.....	258
Trunk Lamp Bulb.....	258
Trunk Latch.....	257
Trunk Latch Striker/Anchor.....	257
Trunk Lid.....	256
Trunk Lid Bumper.....	183
Trunk Lid Catch.....	257
Trunk Lid Emblem.....	160-161
Trunk Lid Guides.....	256
<b>Trunk Lid Hinge.....</b>	<b>256</b>
Trunk Lid Torsion Rods.....	257
Trunk Light Wire Harness.....	258
Trunk Lid Molding.....	192
Trunk Lock.....	248
Trunk Lock Cylinder Gasket.....	257
Trunk Lock Handle Shaft.....	257
Trunk Lock Retainer.....	257
Trunk Mat.....	258
Trunk Mirror.....	223
Trunk Mount Chassis Harness.....	539
Trunk Paint.....	155
Trunk Pan.....	261
Trunk Pan Plug.....	261
Trunk Panel.....	258
Trunk Partition, Rear Seat.....	65
Trunk Refinish Paint.....	260
<b>Trunk Release Cable.....</b>	<b>257</b>
Trunk Release, Electric.....	543
Trunk Repair Set.....	265
Trunk Spatter Paint.....	260
Trunk Weatherstrip.....	180
Tube Seal, Oil Dipstick.....	394
Tube, AC Evaporator Core Orifice.....	382
<b>Tube, Heat Riser.....</b>	<b>480</b>
Tube, Oil Dipstick.....	395
<b>Tube, Power Brake Booster.....</b>	<b>313</b>
Tube, Smog.....	482
Tube, Steel Exhaust Manifold.....	480
Tubing Bender.....	329
Tubing, Pressure Gauge.....	82
Tubular Control Arms.....	280
Tunnel X-Crossover Pipe.....	483
Turbo Heat Shield.....	495
Turn Signal Cam.....	106
Turn Signal Cancelling Cam.....	106
Turn Signal Flasher.....	106
Turn Signal Harness Adapter.....	106
Turn Signal Hold Down Bolt.....	106
Turn Signal Lever.....	106, 527
Turn Signal Lever Knob.....	106
Turn Signal Repair Set.....	106
Turn Signal Switch.....	106
Turn Signal Switch Connector.....	106
Turn Signal Wiring Harness.....	547
<b>Turn Signal with Cruise Lever.....</b>	<b>105</b>
Turndown, Exhaust.....	492
TVS Suspension System.....	286

**U**

U-Bolt, Leaf Spring.....	300
<b>U-Bolt, Rear Axle Flange.....</b>	<b>303</b>

<b>U-Joint U-Bolt.....</b>	<b>303</b>
U-Joint, Driveshaft.....	303
<b>U-Joint, Power Steering.....</b>	<b>273</b>
U-Joint, Steering.....	103
<b>U-Joint, Steering Column.....</b>	<b>103</b>
U-Shape Door Jamb Seal.....	179
Under Dash Gauge Panel.....	83
Undercoating Paint.....	154
Underdash Wiring Harness.....	536
Underhood And Trunk Fasteners.....	219
Underhood Mirror.....	223
Underhood Paint.....	154-155
Underlay, Carpet.....	12
Upholstery Cleaner.....	149
<b>Upholstery Installation Set.....</b>	<b>28</b>
Upholstery Tool.....	59
Upholstery, Interior.....	20-27
Upper Ball Joint.....	279
Upper Control Arm.....	281
Upper Control Arm, Tubular.....	280
Urethane Weatherstrip Adhesive.....	193
<b>USB Port, Radio.....</b>	<b>88</b>

**V**

V8 Conversion Front Sump Oil Pan.....	390
V8 Oil Pan Conversion Kit.....	390
<b>Vacuum Actuator.....</b>	<b>373</b>
Vacuum Advance Cover.....	427
Vacuum Advance Lockout.....	426
<b>Vacuum Advance Retainer Clip.....</b>	<b>426</b>
Vacuum Advance Tube.....	426
Vacuum Advance, Distributor.....	427
Vacuum Booster Pipe.....	412
Vacuum Canister.....	378
Vacuum Cap.....	468
Vacuum Hose Clamp.....	461
Vacuum Line, Distributor.....	426
Vacuum Line, Transmission Modulator.....	504
Vacuum Secondary Diaphragm.....	468
<b>Vacuum Sensor, Thermal Intake.....</b>	<b>439</b>
<b>Valve Cover.....</b>	<b>414-415, 417</b>
Valve Cover Bolts.....	423
Valve Cover Breather.....	420
Valve Cover Decal.....	163
Valve Cover Elbow.....	439
<b>Valve Cover Gaskets.....</b>	<b>422</b>
<b>Valve Cover Grommet.....</b>	<b>419</b>
Valve Cover Hardware.....	423
Valve Cover Hold Down Nuts.....	423
Valve Cover Hold Downs.....	422
Valve Cover Spreader Bar.....	422
Valve Cover Stencil.....	417
Valve Cover to Air Cleaner Hose.....	439
Valve Cover Wire Looms.....	422
Valve Spring Compressor Tool.....	384
Valve Springs.....	407
Valve Stem Cap.....	337
Valve Stem, Tire.....	337
Valve Tee, AIR Injection Diverter.....	482
Valve, AC Expansion.....	383
Valve, Brake Bleeder.....	317
Valve, Brake Check.....	315
Valve, Brake Hold-Off.....	315
Valve, Exhaust Manifold Heat Riser.....	480
Valve, Gas Tank Vent.....	454
<b>Valve, Heater Control.....</b>	<b>372</b>
Valve, Power Steering.....	273
<b>Valve, Proportioning.....</b>	<b>316-317</b>
Valve, Rear Brake Pressure Regulator.....	315
Valve, Smog Check.....	482
Valvetrain Oil Deflectors.....	407
Vanity Mirror, Sun Visor.....	63
Vehicle Maintenance Decal.....	171
Vehicle Ramps.....	147
Vent Frame Weatherstrip.....	177
Vent Glass.....	184
Vent Grill, Door Jamb.....	244
Vent Outlet, Dash.....	376
Vent Pull Knob.....	375
Vent Window Frame.....	185
Vent Window Handle.....	53
Vent Window Stopper.....	177
Vent, AC Air Distributor Duct.....	376
Vent, Defroster.....	375
Ventilator, Axle.....	304
<b>Vinyl Adhesive.....</b>	<b>59</b>
Vinyl Floor Cover.....	7
Vinyl Top.....	243
Vinyl Top Cleaner.....	149, 243



Vinyl Top Molding.....	191
VIR Eliminator Assembly.....	383
Vise Grip Pliers.....	264
Visor, Sun.....	54-57
Visor, Tip/Bushing Set.....	60
Voltage Regulator.....	450
Voltage Regulator Bolts.....	450
Voltage Regulator Ground Wire.....	450
Voltage Regulator Nut.....	450
Voltage Regulator Wiring Pigtail.....	450

**W**

Wagon Tailgate Glass Channel.....	186
Warning Module, Low Fuel.....	123
Warranty Certificate.....	171, 174
Wash System Buckets.....	146
Washer Bottle Decal.....	167, 233
Washer Bottle/Jar, Windshield.....	233
Washer Cupped, Fender.....	230
Washer Hose Tie Straps.....	234
Washer Pump Repair Set.....	234
Washer, AC Flange Pad.....	380
Washer, Brake Hose.....	320
Washer, Countershaft Gear Bearing.....	515
Washer, Distributor.....	426
Washer, Door Glass.....	187
Washer, Door Striker Bolt.....	246
Washer, Pitman Arm.....	275
Washer, Pitman Shaft.....	275
Washer, Steering Knuckle Spindle.....	328
Washers, AC Compressor Seal.....	380
Washers, Intake Manifold.....	413
Water Neck.....	370
Water Neck Mounting Bolts.....	369
Water Outlet.....	370
Water Outlet Bolt.....	369
Water Outlet Restrictors.....	370
Water Outlet Stud.....	369
Water Pump.....	364-365
Water Pump Bolts.....	367
Water Pump Bypass Hose Clamp.....	365
Water Pump Bypass Hose Set.....	365
Water Pump Drive Set.....	366
Water Pump Gasket.....	366
Water Pump Hose Outlet Fitting.....	367
Water Pump Pulley.....	368-369
Water Pump Pulley Reinforcement.....	368
Water Pump Rebuild Set.....	365
Water Pump, Electric.....	366
Water Shield, Interior.....	47
Weatherstrip.....	177-180
Weatherstrip Adhesive.....	181
Weatherstrip Clips.....	179
Weatherstrip Hook Tool.....	193
Weatherstrip Kit.....	176
Weatherstrip Lubricant.....	181
Weatherstrip, Back Glass.....	177
Weatherstrip, Door Frame.....	178
Weatherstrip, Hatchback.....	180
Weatherstrip, Roof Rail.....	180
Weatherstrip, Trunk.....	180
Weatherstrip, Vent Frame.....	177
Weatherstrip, Window Channel.....	186
Weatherstrip, Windshield.....	177
Wedge, Door Alignment.....	245
Wedge, Pinion.....	300
Wedge, Steering Column.....	103
Well Liner, Convertible.....	241
Wheel Bearing.....	328
Wheel Bearing Grease.....	328
Wheel Bearing Grease Cap.....	328
Wheel Bearing Seal.....	328
Wheel Bolt Center Measuring Template.....	337
Wheel Cap Emblem.....	334
Wheel Cap, Custom.....	336
Wheel Center Cap.....	333-335, 339-341
Wheel Center Cap Retainer.....	337
Wheel Center Caps, Rally.....	330-331
Wheel Chocks.....	147
Wheel Cover Spinner.....	334-335
Wheel Cover Spinner Decals.....	335
Wheel Cover Spinners.....	335
Wheel Cover, Custom.....	336
Wheel Cylinder Rebuild Set.....	326
Wheel Cylinder, Drum Brake.....	326
Wheel Hanger.....	147
Wheel Insert Bezel.....	335
Wheel Locks.....	332
Wheel Lug Nuts.....	338-342
Wheel Opening Molding.....	192

Wheel Opening Molding Screw.....	192
Wheel Ornament Decal.....	335
Wheel Ornament Retainer.....	335
Wheel Ornaments.....	338
Wheel Paint Mask Set.....	337
Wheel Protector.....	147
Wheel Spacer.....	337
Wheel Spinner Emblem.....	335
Wheel Spinners.....	341
Wheel Stud.....	337
Wheel Trim Ring.....	335
Wheel Trim Rings.....	332, 338
Wheel Well Opening, Extended.....	255
Wheel Well, Inner Fender.....	229
Wheel, Steering.....	108-109, 112-115, 117-119
Wheelhouse Access Hole Plug.....	261
Wheelhouse Bolt.....	230
Wheelhouse Panel.....	254-255
Wheels.....	330, 331, 333, 338-341
Windage Tray, Front Sump.....	391-392
Windlace Clip, Door Jamb.....	179
Windlace End Cap.....	179
Windlace, Convertible Top Header Bow.....	242
Windlace, Door Jamb.....	179
Window Bumper.....	187
Window Channel Liner.....	187
Window Crank Handle.....	52-53
Window Crank Knob.....	52
Window Decal.....	169
Window Felt Clips.....	267
Window Felt Set.....	178
Window Frame Molding, Door.....	190
Window Guide.....	187
Window Guide Roller Nut Tool.....	187
Window Handle Clip.....	51
Window Handle Washer Plate.....	53
Window Harness Boot, Power.....	544
Window Molding.....	190
Window Molding Clips.....	194
Window Motor, Power.....	544
Window Regulator.....	187
Window Regulator Cam Spacer.....	187
Window Switch, Power.....	51
Windshield Adhesive Sealant.....	185
Windshield Glass.....	184
Windshield Glass Support.....	185
Windshield Molding.....	59
Windshield Molding Clip.....	194
Windshield Molding Screws.....	194
Windshield Molding Tool.....	193
Windshield Moldings.....	190
Windshield Removal Tool.....	193
Windshield Sunscreen.....	146
Windshield Washer Bottle.....	233
Windshield Washer Bottle/Jar.....	233
Windshield Washer Hose.....	234
Windshield Washer Jar Bracket.....	233
Windshield Washer Jar Cap.....	234
Windshield Washer Nozzle.....	234
Windshield Washer Pump.....	233-234
Windshield Washer Screen.....	234
Windshield Weatherstrip.....	177
Windshield Wiper Arm.....	232
Windshield Wiper Arm Remover Tool.....	232
Windshield Wiper Blade.....	232
Windshield Wiper Bullet Caps.....	234
Windshield Wiper Motor.....	235
Windshield Wiper Switch.....	98
Windshield Wiper Switch Knob.....	98
Windshield Wiper Transmission.....	235
Windshield/Back Glass Molding Clip Screws.....	194
Wiper Arm.....	232
Wiper Blades.....	233
Wiper Module.....	98
Wiper Module, Intermittent.....	234
Wiper Motor Grommet.....	235
Wiper Motor Ground Strap.....	235
Wiper Motor Link.....	235
Wiper Motor to Firewall Seal.....	235
Wiper Transmission Mounting Screw.....	235
Wiper Wire Harness.....	537
Wipers, Hidden.....	234
Wire Connector Terminals.....	549
Wire Gutter.....	549
Wire Harness Clamp.....	549
Wire Harness Retainer, Starter.....	446
Wire Harness Tape.....	548
Wire Harness, Back-Up Lamp.....	537
Wire Harness, Blower Motor Resistor.....	374
Wire Harness, Complete Kit.....	539
Wire Harness, Console.....	537

Wire Harness, Console Gauge.....	123
Wire Harness, Distributor.....	427
Wire Harness, Dome Lamp.....	61
Wire Harness, Fuel Tank Sender.....	456, 535
Wire Harness, Fuse Panel System.....	541
Wire Harness, Hood Lamp.....	258
Wire Harness, Neutral Safety Switch.....	537
Wire Harness, Speaker.....	92
Wire Harness, TCS Switch.....	538
Wire Harness, Transmission.....	538
Wire Harness, Trunk Light.....	258
Wire Harness, Wiper.....	537
Wire Looms, Spark Plug.....	436
Wire Looms, Valve Cover.....	422
Wire Port, Firewall.....	548
Wire Retainer TCS Switch.....	525
Wire Separators, Spark Plug.....	436-437
Wire Sleeve Protectors.....	436
Wire Sleeves.....	548
Wire Wheel Cover Spinner.....	335
Wire, Ignition Coil.....	431
Wires, Spark Plug.....	433-435
Wiring Crimping Tool.....	546
Wiring Diagram.....	142
Wiring Grommet.....	549
Wiring Harness J-Strap Clips.....	549
Wiring Harness Retainer Clips.....	549
Wiring Harness with Relay, Electric Fan.....	361
Wiring Harness, Chassis.....	540-541
Wiring Harness, Cigarette Lighter.....	537
Wiring Harness, Clock.....	537
Wiring Harness, Dash Panel.....	82
Wiring Harness, Dash to Back-Up Switch.....	537
Wiring Harness, Engine.....	539
Wiring Harness, Front Lamp.....	534
Wiring Harness, Fuel Injection Engine Swap.....	539
Wiring Harness, Glove Box Lamp.....	99
Wiring Harness, Headlamp.....	200
Wiring Harness, HEI.....	427
Wiring Harness, Kick Down.....	538
Wiring Harness, Rear Body Lamp.....	536-537
Wiring Harness, Rear Window Defogger.....	536
Wiring Harness, Turn Signal.....	547
Wiring Harness, Underdash.....	536
Wiring Insulation.....	495
Wiring Manual.....	145
Wiring Pigtail, Blower Motor Relay.....	374
Wiring Pigtail, Voltage Regulator.....	450
Wiring S-Boots, Power Window.....	544
Wiring Set, 20 Circuit.....	539
Wiring Set, Temperature Sending Unit.....	360
Woodruff Key.....	404
Wrench, Brake Bleeder.....	329
Wrench, Lug/Jack.....	260
Wrench, Oil Filter.....	399

**X**

X-Pipe Crossover Dump Legs.....	483
X-Pipe, Exhaust.....	483

**Y**

Y-Pipe, Exhaust.....	483
Yenko Decals.....	173
Yenko License Plate.....	133
Yenko Stripes.....	175

**Z**

Zerk Fittings.....	279
Zinc Anode, Cooling System.....	360

# New Product Showcase

RESTORATION

OER



4227012 - installed

*Super Sport*

## 1966-67 SS Quarter Panel Emblem

Reproduction quarter panel emblem for 1966-67 Super Sport Nova models. This emblem is the correct polished chrome Super Sport script lettering.

4227012 1966-67 ..... 36.99 ea

New!



## 1961-62 Wonder Bar Bluetooth Radio

This new reproduction radio features the exact look and feel of the original radio with modern audio performance. Features: chrome-plated die-cast nose piece, Wonder Bar and shaft bezels fit like the original, correct knobs and push buttons, Wonder Bar seeks on AM or FM, and 10 presets (5 AM, 5 FM).

F19722 1961-62 AM/FM ..... 849.99 ea

RESTORATION

OER



## 1973-74 Bullet Door Mirror

OER® reproduction bullet mirrors for 1973-74 Nova models. These mirrors were optional from 1973-74. The driver side mirror is remote and includes the cable assembly and adjustment knob. Each mirror is ready to prep and paint to desired color. Bracket, gasket and mounting screws available separately.

**Note:** The RH mirror does not include the words "Objects In Mirror Are Closer Than They Appear".

9865801 1973-74 LH remote ..... 169.99 ea  
20154908 1973-74 RH manual ..... 159.99 ea

New!

OER



6274309 - installed



6274310



6274309

## 1973-74 Nova Headlamp Bezels

OER® reproduction headlamp bezel for 1973-74 Chevrolet Nova models. Each reproduction headlamp bezel is manufactured in stamped aluminum to exact factory specifications. Each bezel is painted to match the original offering an authentic appearance when installed.

6274309 1973-74 LH ..... 99.99 ea  
6274310 1973-74 RH ..... 99.99 ea

New!

OER AUTHORIZED



16143

16144

## 1968-72 Trunk Lid Hinges

Reproduction trunk lid hinge assembly for 1968-72 Chevrolet Chevy II/Nova models. Manufactured in stamped steel and finished in EDP coating for protection against rust or corrosion. This assembly is welded to the lower support bracket on each side of the vehicle, which is welded to the rear inner wheelhouse panel. Located in the trunk compartment, this is the assembly that features the trunk lid hinge which supports the trunk lid on the LH or RH side of the vehicle.

16143 1968-72 LH ..... 149.99 ea  
16144 1968-72 RH ..... 149.99 ea



## 1976-77 Trunk Release Switch

Reproduction 1976-77 Chevy II/Nova power deck lid or trunk release switch with yellow button and white "TRUNK" writing on the bezel.

TR2313Z 1976-77 "TRUNK" ..... 18.99 ea

New!

OER AUTHORIZED



FSB910

FSB906

## 1962-79 Front Sway Bar Set

Front sway bar for 1962-79 Chevy II/Nova models. Manufactured to correct factory specifications replicating the original in design and fitment. Includes: sway bar, high-performance rubber bushings, and mounting hardware.

**Note:** Shipped oversize.

Part Number	Year Range	Size	Price
FSB910	1962-67	1" diameter	139.99 set
FSB902	1968-74	1-1/8" diameter	149.99 set
FSB908	1975-79	1-1/8" diameter	149.99 set
FSB907	1975-79	1-1/4" diameter	149.99 set
FSB906	1975-79	1-3/8" diameter	179.99 set

PROFORM



141836

141837

## Raised Emblem Air Cleaner Kit

NEW Slant-Edge air cleaners are the perfect way to complete your dress-up look in premium Slant-Edge style. Whether you have Slant-Edge valve covers, or a set from a different series, these air cleaners will bring your engine look together in head turning fashion. Includes genuine 3" GM air filter elements for maximum airflow and necessary mounting hardware.

**Emissions Note:** \* ③ Non-CARB compliant (not legal for emission controlled vehicles).

141836\* red ..... 180.99 ea  
141837 powder coated ready ..... 167.99 ea

New!

OER AUTHORIZED



## 1968-74 Front Disc Brake Kit

Front disc brake conversion kit for 1968-74 Chevy II/Nova models. Kit includes stock height spindles, vented drilled and slotted 11" rotors, and black powder coated pre-loaded brake calipers. This kit is designed to be used with 15" or larger wheels.

**Note:** Shipped oversize.

154771BK 1968-74 black calipers 529.99 ea



CHANGE SERVICE REQUESTED

CALL TOLL-FREE OR  
ORDER ONLINE TODAY

1-800-854-1280 / classicindustries.com

1668049

1668050

OER AUTHORIZED

1668-72 Quarter Panel Skin

Reproduction quarter panel skin for 1968-72 Chevy II/Nova models. The skin extends to the top crease of the original quarter panel and is cut so it extends from the door jamb to the bumper area and includes precut side marker openings. The panel offers a good fit, will install with minimal refitting and will allow application of the wheel opening moldings. Each panel requires welding for installation. Professional installation is recommended to ensure proper fit.

**Note:** Shipped truck freight.

1668049	1968-69	LH.....	129.99 ea
1668048	1968-69	RH.....	129.99 ea
1668051	1970-72	LH.....	149.99 ea
1668050	1970-72	RH.....	149.99 ea

New!

153551

153552

OER AUTHORIZED

1968-72 Upper Sail Repair Panel

Reproduction sail panel for 1968-72 Chevy II/Nova models. Manufactured in stamped steel to original factory specifications featuring correct contours for an authentic appearance and fit. Manufactured to repair the upper portion of the quarter panel section that connects the quarter panel to the roof.

153551	1968-72	LH.....	69.99 ea
153552	1968-72	RH.....	69.99 ea

FREE

Lock Kit and Storage Bag with Car Cover Purchase

A \$20.00 Value!

OER AUTHORIZED

WeatherBlocker™ Plus

Soft cotton lining for protection against door dings and scratches.

Available in Gray or Tan

GR

TN

62441 (large duster)

62443 (mini duster)

Pickup Layers of Dust with One Sweep!

An easy way of keeping your vehicle clean and free of dust, looking like it was just washed. It's specially treated cotton fibers lift dust off the surface without scratching the paint, even delicate lacquers. The more you use it, the better it works! Regular use can significantly reduce the frequency of washings.

Duster Sets		Replacement Mop Heads w/o Handle	
62444	large & mini dusters 29.99 set	62445	large mop head .... 9.99 ea
62447	large and mini w/extra mop heads 42.99 set	62446	mini mop head ..... 6.99 ea
		62440	2 large, 2 mini mop heads 25.99 set

★ Outdoor Use

★ Four Layer Material

MT2760G

1962-67

coupe and sedan

149.99 ea

MT2763G

1968-79

coupe and sedan

149.99 ea

© COPYRIGHT 2025 Classic Industries® Inc.

CONNECT WITH US ON

f

ig

tw

pin

yt

MADE IN USA

Printed in the USA

ISSN 1539-8420